

2013

Gate & Fence Accessories • Roller Chain • PTO Adapters • Hardware & Fasteners • Hitch Pins • 3-Point Linkage • Farm Hardware & Accessories



# PRODUCT CATALOG

Since 1957



Tractor Linkage



Fence Stretcher



Gate Wheels



Hubs, Sprockets & Pulleys



Trailer Jacks



Solutions for country living®





# TABLE OF CONTENTS

<b>PRODUCT</b>	<b>PAGE(S)</b>	<b>PRODUCT</b>	<b>PAGE(S)</b>	<b>PRODUCT</b>	<b>PAGE(S)</b>
Augers .....	81, 83	Drill Drag Chain .....	38	Mid-Links .....	47
<b>Ball Ends</b>		Drum Pump .....	48	Muffler Clamp .....	38
Category 1 Double Ball .....	8	Engine .....	84	OE Division .....	86
Weld-On Forged .....	8	E Rings .....	33	Offset Links .....	65
<b>Ball Sockets</b>		Forged Top Links .....	4	Plan-O-Grams .....	85
Lift Arm .....	7	Forged Weld-on Ball Ends .....	8	Poly Bags .....	85
Top Link .....	6	<b>Fuel Strainer</b>		<b>Post Hole Diggers</b>	
<b>Bead Breaker</b> .....	48	Bowls .....	49	Augers & Accessories .....	81, 83
<b>Bells</b>		Replacement Parts .....	49	Handheld .....	81
Kentucky Cow Bells .....	36	<b>Gate &amp; Fence</b> .....	50-55	Tractor Mounted .....	82
Long Distance Cow Bells .....	36	Gate Anchor .....	51	<b>Post Pounders</b> .....	54
Sports Bells .....	37	Gate Latches .....	51	Post Pullers .....	54
<b>Bolt Hooks</b> .....	50	Gate Closers .....	53	<b>PTO Adapters &amp; Accessories</b> .....	42-43
<b>Bushings</b>		Gate Hinges .....	52	Pulleys .....	62-63
Assortments .....	71	Gate Wheels .....	52	Quick Hitches .....	74
Idler Pulley .....	63	Grease Fittings .....	32	Quick Repair Bushings .....	29
Lift Arm Reducer .....	10	Assortment .....	32	R Clip Pins .....	24
Machine .....	28	<b>Harrow Teeth</b> .....	41	Assortment .....	72
Quick Repair .....	29	<b>Hardware &amp; Accessories</b> .....	27-49	<b>Raincaps</b> .....	35
Top Link Reducer .....	10	Hay Hooks .....	40	Ratchet Jacks .....	69
<b>Clamps</b>		Hinge Bolts .....	50	Repair Ends, Top Link .....	5
Insulated Closed .....	37	Hinge Clamps .....	50	Retaining Rings .....	33
<b>Clamshell Packaging</b> .....	85	Hinge Straps .....	50	Roll Pin .....	43
<b>Clevis Type Draw Pins</b> .....	15	Hitch Balls .....	39	Roller Chain .....	64-65
<b>Clevis Pins</b> .....	23	Hitches & Related Parts .....	74	Roller Chain Breaker .....	64
Assortment .....	23, 71	<b>Hitch Pins</b>		Set Screws .....	32
Adjustable .....	23	Assortments .....	70	Assortment .....	32
Hitch Pins .....	16	Bent .....	22	<b>Shaft Set Collars</b> .....	39
T-Handle .....	47	Blue Head .....	18, 70	<b>Spring Pins</b> .....	27
Universal .....	23, 71	Clevis Pins .....	16	Assortment .....	27
<b>Clevises</b>		Double Lok .....	20, 73	<b>Sprockets</b> .....	56-59
Check Chain .....	11	Drop Forged .....	21	<b>Stabilizer Arms</b> .....	13
Check Chain Clevis Eye Bolt .....	11	Fixed Handle .....	16	<b>Stabilizer Brackets</b> .....	13
Farm (Screw) .....	46	Forged with Chain .....	17	<b>Stabilizer Chains</b> .....	13
General Purpose .....	45	Grey Head .....	18, 70	<b>Stabilizer Pins</b> .....	12
Straight .....	45	Handle-Lok .....	20	<b>Stake Pocket</b> .....	38
Twisted .....	45	Premium .....	21, 70	<b>Stay Chain Assembly</b> .....	13
Utility .....	46	Red Head .....	19, 70	<b>Stay Straps</b> .....	13
<b>Clip Pins</b>		Safety-Lock .....	19	<b>Steering Wheel Spinners</b> .....	34
Hydraulic Cylinder Clip Pins .....	69	Swivel Handle Forged .....	17, 70	Assortment .....	73
R Clip .....	24, 72	<b>Hubs</b> .....	60-61	<b>Swinging Drawbar</b> .....	11
Twist Clip .....	24	<b>Hydraulic Reservoir</b> .....	38	<b>Three Point Hitch System</b> .....	3
<b>Clutch, Over-Running</b> .....	42	<b>Index</b> .....	87-93	<b>Tool Boxes</b> .....	40
<b>Compression Clip Pin</b> .....	22	<b>Insulated Closed Clamps</b> .....	37	<b>Top Links</b> .....	4
<b>Connecting Links</b> .....	65	<b>Introduction</b> .....	2-3	<b>Top Link &amp; Lift Arm Replacement Balls</b> .....	9
<b>Contact Information</b> .....	1	<b>Jacks</b>		<b>Top Link Ball Sockets</b> .....	6
<b>Cotter Pins</b>		Ratchet .....	69	<b>Top Link Pins</b> .....	15
Assortment .....	30-31	Replacement Parts .....	68	<b>Top Link Reducer Bushings</b> .....	10
Hairpin .....	31	Trailer .....	66-68	<b>Top Link Repair Ends</b> .....	5
Straight .....	30	<b>Key Stock, Square</b> .....	29	<b>Tractor Drawbar Grab Hook</b> .....	47
<b>Counter Top Assortments</b> .....	70-73	<b>Lift Arm and Lift Arm Parts</b> .....	12	<b>Trailer Jack Replacement Parts</b> .....	68
<b>Cow Bells</b>		<b>Lift Arm Ball Sockets</b> .....	7	<b>Trailer Jacks</b> .....	66-68
Kentucky .....	36	<b>Lift Arm Balls</b> .....	9	<b>Trash Pump</b> .....	84
Long Distance .....	36	<b>Lift Arm Reducer Bushings</b> .....	10	<b>Twist Clip Pins</b> .....	24
Sports .....	37	<b>Linkage</b> .....	4-26	<b>Twist Lock Pins</b> .....	22
<b>Custom Manufacturing</b> .....	86	<b>Linkage Pin Assortment</b> .....	72	<b>UltraFork</b> .....	75
<b>Cylinder Pins, Hydraulic</b> .....	34	<b>Lock Pins</b> .....	44	<b>Universal Clevis Pins</b> .....	23, 71
<b>Cylinder Stroke Control Segments</b> .....	35	Assortment .....	44, 73	<b>UPC Labeled Parts</b> .....	85
<b>Detent Pins</b> .....	25	<b>Log Splitters</b> .....	76-79	<b>Washer, Cultivator</b> .....	31
<b>Diggers, Post Hole</b> .....	81-83	<b>Log Splitting Accessories</b> .....	80	<b>Wheel Spinners</b> .....	34
<b>Displays</b> .....	70-73	<b>Lynch Pins</b> .....	26	Assortment .....	73
<b>Double Lock Hitch Pin Display Stand</b> .....	73	Assortment .....	71	<b>Wire Carrier</b> .....	53
<b>Draw Pins (Lift Arm Pins)</b> .....	14	<b>Machine Bushings</b> .....	28	<b>Wire Gripper</b> .....	53
Clevis Type .....	15	Assortment .....	28	<b>Wire Stretchers</b> .....	55
<b>Drawbar Grab Hook</b> .....	47	<b>Machinery Key Stock</b> .....	29	<b>Woodruff Keys</b> .....	33
<b>Drawbar Lock</b> .....	11	Assortment .....	29	<b>Yoke Pin Assembly</b> .....	43
<b>Drawbars</b> .....	11	<b>Manure Spreader</b> .....	75		
<b>Drawbars, Swinging</b> .....	11	<b>Merchandising</b> .....	85		

www.speeco.com

• Toll Free: 800-525-8322

• FAX: 303-278-3432

# CONTACT INFORMATION



## Customer Service

Our knowledgeable staff is available to assist you with product information and sales orders from 7:00 a.m. to 4:30 p.m. (MST) Monday through Friday. If you need assistance before or after our normal business hours you may leave a message and a SpeeCo representative will respond as quickly as possible.

Phone: 303-279-5544  
Toll Free: 800-525-8322  
Fax: 303-278-3432

Web: www.speeco.com  
Email: customersupport@speeco.com

## Ordering Information

Many of our more popular small parts are available in colorful SpeeCo poly bags and plastic clamshells which are imprinted with a bar code and descriptive information. See the columns marked "BAG NO." and "CLAM. NO." for the items available. Package quantities are shown in parentheses. All orders are shipped prepaid and add unless otherwise requested. Minimum Order: \$100

NOTE: "WEIGHT" = individual part weight. For the bag or clamshell package weight, simply multiply by the package quantity.

## Warranties

The Company warrants that the equipment manufactured by SpeeCo and delivered hereunder will be free of defects in material and workmanship for a period as outlined below. Any SpeeCo product or part believed to be defective may be returned prepaid after approval is given by our customer service department. Following inspection, if the product is deemed to be defective in material or workmanship, repair or replacement will be made at no charge and returned prepaid. Below is an example of product warranties. For the most complete and up-to-date information, please contact customer service.

Three-point linkage	1 year	-	-	-	-
Hand-held diggers	1 year	-	-	-	-
Three-point diggers	3 years	-	Driveline 1 year	-	-
Quick hitches	3 years	-	-	-	-
Log splitters	Electric (5 ton) 1 year	Hydraulics 1 year	Engine (warranted by engine manufacturer) 2 years	SpeeCo engine 1 year	Steel components 3 years

## Tech Support, Warranty Service, and Parts

SpeeCo utilizes an extensive network of independent service locations throughout the United States. Log splitters requiring warranty or post warranty service should be taken to one of these authorized service locations for experienced analysis and repair. To find the authorized service locations nearest you, please visit our web site at www.speeco.com and click on the service center area for specifics on locating one in your area.

Technical Support for all SpeeCo products is available via the telephone from 7:00 a.m. to 4:30 p.m. (MST) Monday through Friday. You may reach our Technical Support Specialists at 800-525-8322 and follow the prompt for Technical Support. These trained professionals can assist with operational and technical questions, as well as assistance identifying replacement parts for SpeeCo products.

Solutions for country living®



# INTRODUCTION

## About SpeeCo

SpeeCo, a division of Blount International, is located in scenic Golden, Colorado and is a global leader in tractor 3-point linkage parts and farm accessories. In addition, we are a leading manufacturer of tractor-mounted quick hitches, post hole diggers and hydraulic log splitters.

Founded in 1957, our primary objective for over 50 years has been to provide our customers with a complete and profitable selection of quality merchandise at competitive prices. We take great pride in being a long-term supplier to many of America's major tractor manufacturers, implement manufacturers and national farm equipment retailers.

Our 350,000 square foot facility in Kansas City, Missouri has a world class warehouse management system and is SAP compatible. It offers 59 dock doors for maximum flow-through for shipping and receiving.

We continue to build upon a large knowledge base of this industry created by our many years of engineering and manufacturing expertise. Our sales and customer service personnel, supported by a staff of professional engineers, welcome the opportunity to assist you in your special needs.



350,000 square foot facility in Kansas City, Missouri



# INTRODUCTION

## The Three-Point Hitch System

Many of the products described in this catalog are components of the typical tractor three-point hitch system that is standard on almost all farm tractors today. See Illustration A below. The basic function of the system is the attachment and adjustment of agricultural implements.

The three primary parts of the system are the top link and two lower lift arms as shown in Illustration A. Top link pins and draw pins (lift arm pins) are used to fasten the implement at these three points. Adjustment of one or all of these components allows the tractor operator to raise, lower or tilt an implement.

The three-point linkage parts described in this catalog are built to standard specifications set by the American Society of Agricultural and Biological Engineers (ASABE) described in the table on the right.

CATEGORY 0, 1, 2 and 3 are used to classify tractors by PTO horsepower. The table below gives the dimensions and the horsepower ratings that are associated with these four categories.

MAXIMUM PTO HORSEPOWER	TOP LINK PIN DIAMETER	PULL OR DRAW PIN DIAMETER	STANDARD LIFT ARM SPACING
Cat. 0- up to 48	5/8"	5/8"	20"
Cat. 1- up to 92	3/4"	7/8"	26"
Cat. 2- 80 to 185	1"	1-1/8"	32"
Cat. 3- 150 to 350	1-1/4"	1-7/16"	38"

### TOP LINK CONNECTION

Top link pins are always unthreaded and are held in place by either a lynch pin, or in some cases, a large "R" clip pin. See below. Top links and top link pins vary in length, but their respective ball socket holes and pin diameters are standardized by horsepower category.

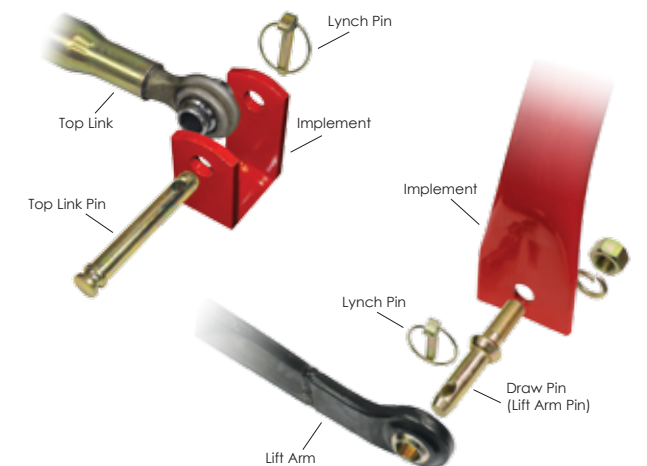
### LIFT ARM CONNECTION

Most lift arm pins are threaded on the end that bolts to the implement bracket. The unthreaded end with the cross hole accommodates the ball socket of the lift arm. The lift arm is secured on the pin with a lynch pin or large "R" clip pin. See below. Lift arms and lift arm pins vary in length, but their respective ball socket holes and pin diameters are standardized by horsepower category.



Illustration A

### Top Link to Implement Connection



Lift Arm to Implement Connection

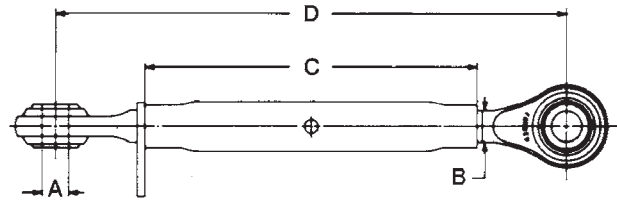




# LINKAGE

## Forged Top Links

Quality forged top links available in Category 0, 1, 1 & 2 combination, 2 and 3. All top links are yellow zinc plated unless otherwise specified. The ends are clear zinc plated.



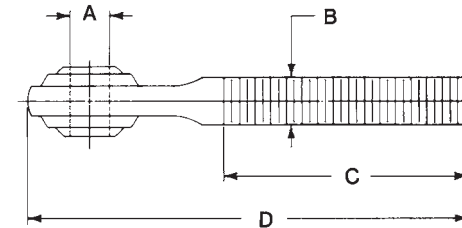
SKU NUMBER	UPC ITEM NO. 0-87196-	CAT.	A PIN HOLE SIZE	B THREAD DIAM.	C BODY LENGTH	D CLOSED LENGTH	OPEN LENGTH	REPAIR END SKU NUMBER		COLOR	WEIGHT (lbs.)
								LEFT	RIGHT		
S01090700	01907 8	0	5/8"	3/4" NC	9-1/2"	13"	18"	S01093300	S01093400	Plated	2.7
S01090900	01909 2	0	5/8"	3/4" NC	7-5/8"	11"	16"	S01093300	S01093400	Plated	2.5
S01063000	01630 5	1	3/4"	1-1/8" NC	13-1/4"	17"	26"	S01061900	S01062000	Plated	7.4
S01060500	01605 3	1	3/4"	1-1/8" NC	16"	21"	28"	S01061900	S01062000	Plated	7.6
S01060600	01606 0	1	3/4"	1-1/8" NC	20"	25"	35"	S01061900	S01062000	Plated	9.1
S01060700	01607 7	1	3/4"	1-1/8" NC	24"	29"	39"	S01061900	S01062000	Plated	8.9
S01065500	01655 8	1	3/4"	1-1/8" NC	11-1/4"	16"	23"	S01061900	S01062000	Plated	6.8
S01067000	01670 1	1 & 2	3/4" & 1"	1-1/8" NC & 1-1/4" NC	16"	21"	32"	S01061900 or S01064100	S01062000 or S01064000	Plated	9.1
S01067200	01672 5	1 & 2	3/4" & 1"	1-1/8" NC & 1"	20"	24-3/4"	35"	S01061900	S01064000	Plated	9.10
S01070400	01704 3	2	1"	1-1/8" NC	16"	21"	31"	S01064100	S01064000	Plated	10
S01070600	01706 7	2	1"	1-1/8" NC	20"	25"	37"	S01064100	S01064000	Plated	10
S01073000	01730 2	2	1"	1-1/4" NC	15-3/4"	20"	30"	S01071700	S01071800	Plated	10.7
S01070300	01703 6	2	1"	1-1/4" NC	16"	23"	32"	S01071700	S01071800	Plated	12
S01073500	01735 7	2	1"	1-1/4" NC	20"	27"	37"	S01071700	S01071800	Plated	12.6
S01070500	01705 0	2	1"	1-1/4" NC	16"	23"	32"	S01071700	S01071800	Red	13.4
S01080700	01807 1	3	1-1/4"	1-3/8" NC	19-1/2"	25-1/2"	37"	S01082700	S01082600	Black	20

# LINKAGE



## Top Link Repair Ends

Forged screw-in repair ends for Category 0, 1, 2 and 3 top links. Clear zinc plated.



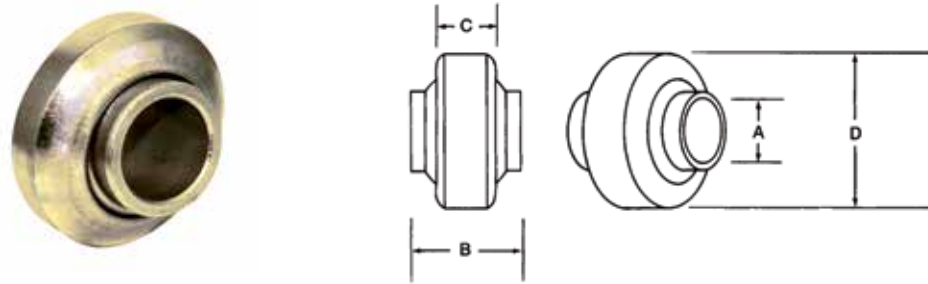
SKU NUMBER	UPC ITEM NO. 0-87196-	CAT.	TYPE	A PIN HOLE SIZE	B THREAD DIAM.	C THREAD LENGTH	D OVERALL LENGTH	FITS SPEECO TOP LINK	WEIGHT (lbs.)
S01093300	01933 7	0	Forged	5/8"	3/4" NC (LH)	3-1/2"	6"	S01090700, S01090900	0.8
S01061900	01619 0	1	Forged	3/4"	1-1/8" NC (LH)	6"	10"	S01060500, S01060600, S01060700, S01063000, S01067000	2.4
S01062000	01620 6	1	Forged	3/4"	1-1/8" NC (RH)	6"	10"	S01060500, S01060600, S01060700, S01063000, S01067000	2.4
S01071700	01717 3	2	Forged	1"	1-1/4" NC (LH)	5-1/2"	10"	S01070300, S01070500, S01073000, S01073500, S01070400	3.0
S01071800	01718 0	2	Forged	1"	1-1/4" NC (RH)	5-1/2"	10"	S01070300, S01070500, S01073000, S01073500, S01070400	3.0
S01064000	01640 4	2	Forged	1"	1-1/8" NC (RH)	6-1/2"	11"	S01070400, S01067000	3.0
S01064100	01641 1	2	Forged	1"	1-1/8" NC (LH)	6-1/2"	11"	S01070400, S01067000	3.0
S01082600	01826 2	3	Forged	1-1/4"	1-3/8" NC (RH)	7-1/4"	12-1/8"	S01080700	8.0
S01082700	01827 9	3	Forged	1-1/4"	1-3/8" NC (LH)	7-1/4"	12-1/8"	S01080700	8.0



# LINKAGE

## Top Link Ball Sockets

Weld-on top link ball sockets to fit Category 0 through Category 3 tractors. Available in black oxide and yellow zinc dichromate plated.



SKU NUMBER	UPC ITEM NO. 0-87196-	CAT.	DESCRIPTION	A PIN HOLE SIZE	B LENGTH THRU BORE	C SLEEVE WIDTH	D SLEEVE O.D.	BAG NO.* UPC NO. 0-87196-	WEIGHT (lbs.)
S02022500	02225 2	0	Standard duty; black oxide	5/8"	1"	3/4"	2"	-	0.6
S02010300	02103 3	1	Standard duty; black oxide	3/4"	1-5/8"	3/4"	2"	-	0.6
S02010600	02106 4	1	Standard duty; plated	3/4"	1-5/8"	3/4"	2"	<u>S020106ZAU (1)</u> 82106 0	0.6
S02010200	02102 6	1	Heavy duty; black oxide	3/4"	1-5/8"	7/8"	2-1/8"	-	0.7
S02010500	02105 7	1	Heavy duty; plated	3/4"	1-5/8"	7/8"	2-1/8"	-	0.7
S02030500	02305 1	1 & 2	Standard duty; black oxide	3/4" & 1"	1-1/2" & 1-1/4"	7/8"	2-3/8"	-	0.6
S02010100	02101 9	3	Standard duty; black oxide	1"	1-3/4"	7/8"	2-3/8"	-	0.8
S02010400	02104 0	2	Standard duty; plated	1"	1-3/4"	7/8"	2-3/8"	<u>S020104ZAU (1)</u> 82104 6	0.8
S02020700	02207 8	2	Standard duty; black oxide	1"	1-1/4"	7/8"	2-3/8"	-	0.8
S02020800	02208 5	2	Standard duty; plated	1"	1-1/4"	7/8"	2-3/8"	-	0.8
S02021900	02219 1	2	Heavy duty; black oxide	1"	1-3/4"	1-3/16"	2-3/4"	-	1.8
S02022900	02229 0	3	Standard duty; black oxide	1-1/4"	1-3/4"	1-9/32"	3-1/8"	-	1.8

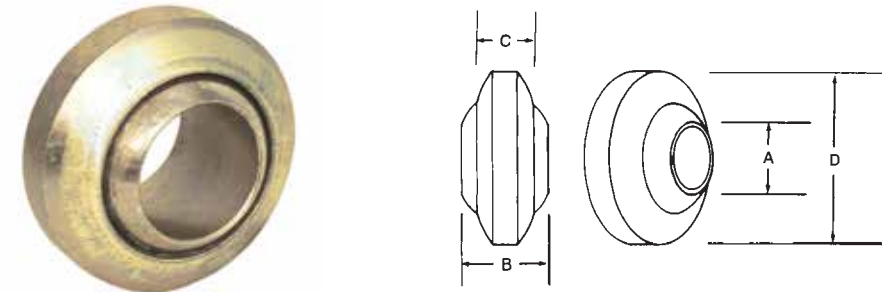
\* Number in parenthesis indicates bag quantity



# LINKAGE

## Lift Arm Ball Sockets

Weld-on lift arm ball sockets to fit Category 0 through Category 3 tractors. Available in black oxide and yellow zinc dichromate plated.



SKU NUMBER	UPC ITEM NO. 0-87196-	CAT.	DESCRIPTION	A PIN HOLE SIZE	B LENGTH THRU BORE	C SLEEVE WIDTH	D SLEEVE O.D.	BAG NO.* UPC NO. 0-87196-	WEIGHT (lbs.)
S02022500	02225 2	0	Standard duty; black oxide	5/8"	1"	3/4"	2"	-	0.6
S02020100	02201 6	1	Standard duty; black oxide	7/8"	1-3/8"	7/8"	2-3/8"	-	0.9
S02020300	02203 0	1	Standard duty; plated	7/8"	1-3/8"	7/8"	2-3/8"	<u>S020203ZAU (1)</u> 82203 6	0.9
S02030100	02301 3	1 & 2	Heavy duty; black oxide	7/8" & 1-1/8"	1-3/4" both	1-3/16"	2-3/4"	-	1.4
S02030300	02303 7	1 & 2	Extra heavy duty; black oxide	7/8" & 1-1/8"	1-3/4" both	1-3/8"	3-1/8"	-	1.7
S02020200	02202 3	2	Standard duty; black oxide	1-1/8"	1-5/16"	15/16"	2-3/8"	-	0.8
S02020400	02204 7	2	Standard duty; plated	1-1/8"	1-5/16"	15/16"	2-3/8"	<u>S020204ZAU (1)</u> 82204 3	0.8
S02021500	02215 3	2	Extra heavy duty; black oxide	1-1/8"	1-3/4"	1-3/8"	3-1/8"	-	1.9
S02021600	02216 0	2	Extra heavy duty; plated	1-1/8"	1-3/4"	1-3/8"	3-1/8"	-	1.9
S02023100	02231 3	3	Standard duty; black oxide	1-7/16"	1-3/4"	1-11/32"	3-1/2"	-	2.4

\* Number in parenthesis indicates bag quantity



# LINKAGE

## Forged Weld-on Ball Ends

High-quality weld-on top link and lift arm ball sockets in Category 1, 2, and 3. Lift arm ends are available in straight and bent styles.



Top Link End

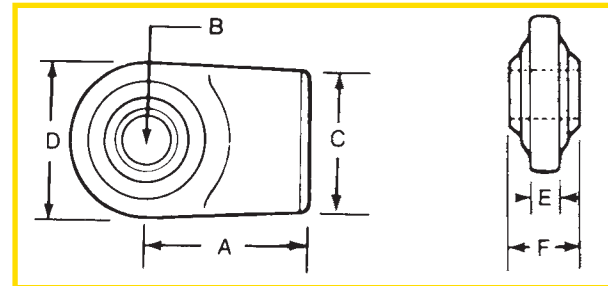
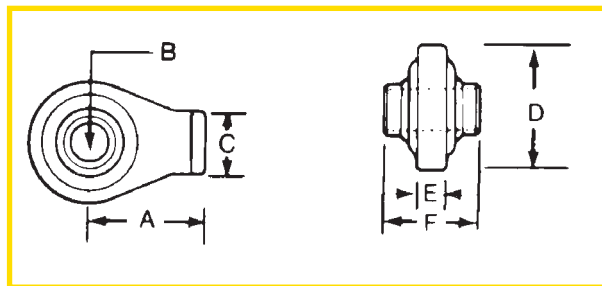
Straight



Bent



Lift Arm End



SKU NUMBER	UPC ITEM NO. 0-87196-	CAT.	DESCRIPTION	A	B	C	D	E	F	CLAM. NO. * UPC NO. 0-87196-	WEIGHT (lbs.)
S01064200	01642 8	1	Top link end	2"	3/4"	1-1/8"	2-1/4"	1/2"	1-3/4"	S010642YAU (1) 91642 1	0.9
S01064300	01643 5	2	Top link end	2-3/8"	1"	1-1/8"	2-5/8"	1/2"	2"	S010643YAU (1) 91643 8	1.4
S03032200	03322 7	1	Lift arm end-straight	2-3/4"	7/8"	2-3/8"	2-5/8"	5/8"	1-3/8"	S030322YAU (1) 93322 0	1.7
S03032500	03325 8	2	Lift arm end-straight	3-1/8"	1-1/8"	2-3/4"	3-1/8"	3/4"	1-3/4"	S030325YAU (1) 93325 1	2.8
S03032300	03323 4	1	Lift arm end-bent	4"	7/8"	1-7/8"	2-5/8"	5/8"	1-3/8"	-	2.0
S03032400	03324 1	2	Lift arm end-bent	4"	1-1/8"	1-7/8"	3-1/8"	5/8"	1-3/4"	-	2.7
S03033000	03330 2	3	Lift arm end-straight	3-3/8"	1-7/16"	3"	3-1/2"	3/4"	1-3/4"	-	3.0

\* Number in parenthesis indicates clamshell quantity



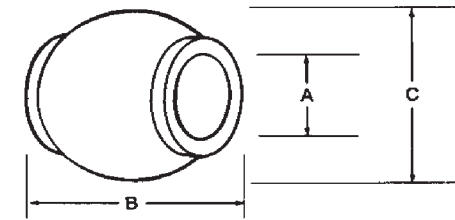
SKU NUMBER	UPC ITEM NO. 0-87196-	DESCRIPTION	WEIGHT (lbs.)
S010642A0	20164 0	Category 1 double ball end; 7/8" pin hole; 4-7/16" centers	2.0



# LINKAGE

## Top Link & Lift Arm Replacement Balls

Top link and lift arm balls for Ford, John Deere, Oliver and other tractors. Designed to replace original balls. Yellow zinc dichromate plated.



SKU NUMBER	UPC ITEM NO. 0-87196-	CAT.	DESCRIPTION	A PIN HOLE SIZE	B LENGTH THRU BORE	C BALL DIAM.	BAG NO. * UPC NO. 0-87196-	CLAM. NO. * UPC NO. 0-87196-	WEIGHT (lbs.)
S02040100	02401 0	1	John Deere & Oliver top link ball; replaces Deere F2680, Oliver 105968A	3/4"	1-3/4"	2"	S020401ZAU (1) 82401 6	S020401YAU (1) 92401 3	0.9
S02040200	02402 7	2	John Deere & Oliver top link ball; replaces Deere F2681, Oliver 104585A	1"	1-3/4"	2"	S020402ZAU (1) 82402 3	S020402YAU (1) 92402 0	0.8
S02040300	02403 4	1	Ford lift arm ball; replaces Ford DDN995233; fits Ford 5000	7/8"	1-3/8"	2-1/4"	-	S020403YAU (1) 92403 7	1.1
S02040400	02404 1	2	Ford lift arm ball; replaces Ford C5NN557A; fits Ford 3000, 4000, 5000	1-1/8"	1-3/4"	2-1/4"	-	S020404YAU (1) 92404 4	1.1
S02040500	02405 8	1	Oliver lift arm ball; replaces Oliver 105967A; fits models with claw type lift arm	7/8"	1-3/8"	2"	-	-	0.7
S02040600	02406 5	2	Oliver lift arm ball; replaces Oliver 104591A; fits all models with claw type lift arm	1-1/8"	1-3/4"	2"	-	S020406YAU (1) 92406 8	0.8
S02040700	02407 2	2	Ford lift arm ball; narrow width; replaces C5NN557B	1-1/8"	1-3/8"	2-1/4"	-	S020407YAU (1) 92407 5	0.9

\* Number in parenthesis indicates bag or clamshell quantity





# LINKAGE

## Top Link Reducer Bushings

Used in the pin hole of a top link to allow a smaller category pin to fit. Yellow zinc dichromate plated. See page 71 for countertop displays and assortments.



Bushing

SKU NUMBER	UPC ITEM NO. 0-87196-	CAT.	DESCRIPTION	OUTSIDE DIAM.	INSIDE DIAM.	LENGTH	BAG NO. *	CLAM. NO. *	WEIGHT (lbs.)
							UPC NO. 0-87196-	UPC NO. 0-87196-	
S08020900	08209 6	0-1	Fits all Cat. 0 top link pins	3/4"	5/8"	1-5/8"	S080209ZAU (1) 88209 2	S080209YBU (2) 98209 9	0.1
S08030100	08301 7	1-2	Fits all Cat. 1 top link pins; replaces Ford C7NN6993A	1"	3/4"	1-15/16"	S080301ZAU (1) 88301 3	S080301YBU (2) 98301 0	0.2
S08022000	08220 1	1-2	Fits all Cat. 1 top link pins; short	1"	3/4"	1-5/8"	S080220ZAU (1) 88220 7	-	0.2
S08030300	08303 1	2-3	Fits all Cat. 2 top link pins	1-1/4"	1"	1-15/16"	S080303ZAU (1) 88303 7	S080303YBU (2) 98303 4	0.2

\* Number in parenthesis indicates bag or clamshell quantity.

## Lift Arm Reducer Bushings

Used in the pin hole of a lift arm to allow a smaller category pin to fit. Yellow zinc dichromate plated. See page 71 for countertop displays and assortments.



Bushing

SKU NUMBER	UPC ITEM NO. 0-87196-	CAT.	DESCRIPTION	OUTSIDE DIAM.	INSIDE DIAM.	LENGTH	BAG NO. *	CLAM. NO. *	WEIGHT (lbs.)
							UPC NO. 0-87196-	UPC NO. 0-87196-	
S08020800	08208 9	0-1	Fits all Cat. 0 lift arm pins	7/8"	5/8"	1-3/8"	S080208ZBU (2) 88208 5	S080208YBU (2) 98208 2	0.1
S08020100	08201 0	1-2	Fits all Cat. 1 lift arm pins; Ford C7NN6992A	1-1/8"	7/8"	1-3/4"	S080201ZBU (2) 88201 6	S080201YBU (2) 98201 3	0.2
S08022100	08221 8	1-2	Fits all Cat. 1 lift arm pins; replaces John Deere F2684	1-1/8"	7/8"	1-3/8"	S080221ZBU (2) 88221 4	-	0.2
S08030200	08302 4	2-3	Fits all Cat. 2 lift arm pins	1-7/16"	1-1/8"	1-3/4"	S080302ZBU (2) 88302 0	S080302YBU (2) 98302 7	0.3
S08032000	08320 8	2-3	Fits all Cat. 2 lift arm pins; extra long	1-7/16"	1-1/8"	3-1/4"	-	S080320YAU (1) 98320 1	0.5
S08031200	08312 3	2-3	Fits all Cat. 2 lift arm pins; 15/32" lynch pin hole	1-7/16"	1-1/8"	2-1/2"	S080312ZBU (2) 88312 9	S0803012YBU (2) 98312 6	0.4
S08031900	08319 2	2-3	Fits all Cat. 2 lift arm pins	1-7/16"	1-1/8"	2-3/4"	S080319ZBU (2) 88319 8	-	0.5
S14114200	14042 6	1	Adapter bushing for Cat. 1 quick hitch	-	7/8"	4"	-	-	1.5
S14114400	14044 4	1	Quick hitch adapter bushing kit	-	7/8"	4"	-	-	3.0
S14112700	14027 7	2	Adapter bushing for Cat. 2 quick hitch	-	1-1/8"	4"	-	-	1.0
S14113000	14030 7	2	Quick hitch adapter bushing kit	-	1-1/8"	4"	-	-	2.2

\* Number in parenthesis indicates bag or clamshell quantity



S14114400



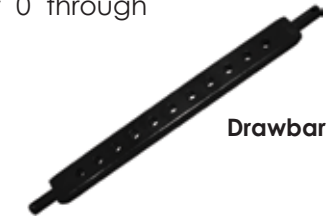
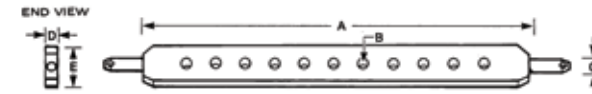
S14113000

# LINKAGE



## Drawbars

One piece 3-point hitch cross drawbars to fit Category 0 through Category 3 tractors.



Drawbar

SKU NUMBER	UPC ITEM NO. 0-87196-	CAT.	NUMBER OF HOLES	A LIFT ARM SPACING	B HOLE DIAM.	C PIN DIAM.	D THICKNESS	E WIDTH	COLOR	WEIGHT (lbs.)
S04010800	04108 6	0	7	20"	5/8"	5/8"	5/8"	2"	Black	6.8
S04010900	04109 3	0/1	7	20"	3/4"	7/8"	1"	2-1/2"	Black	13.5
S04010100	04101 7	1	11	26"	3/4"	7/8"	1"	2-1/2"	Black	16.4
S04011500	04115 4	1	11	26"	3/4"	7/8"	1-1/8"	2-1/2"	Blue	19.0
S04020100	04201 4	2	11	26"	3/4"	1-1/8"	1-1/4"	3"	Black	27.0
S04021200	04212 0	2	13	32"	3/4"	1-1/8"	1-1/4"	3"	Black	33.0
S04030100	04301 1	3	5	38"	1-1/2"	1-7/16"	1-3/4"	3-1/2"	Black	65.0



Swinging Drawbar



Drawbar Lock

SKU NUMBER	UPC ITEM NO. 0-87196-	DESCRIPTION	COLOR	WEIGHT (lbs.)
S09020100	09201 9	Swinging drawbar; 30" overall length; 3/4" first hitch pin hole; 5/8" second hitch pin hole	Black	16.0
S04013000	04130 7	Drawbar lock for Category 1 tractors; prevents drawbar on 3-point hitch from rotating	Black	4.0

## Check Chain Clevis



SKU NUMBER	UPC ITEM NO. 0-87196-	DESCRIPTION	BAG NO. * UPC NO. 0-87196-	CLAM. NO. * UPC NO. 0-87196-	WEIGHT (lbs.)
S16040100	16401 3	Check chain clevis eye bolt; used to fasten check chain to lift arms; replaces Ford NCB660A; fits Ferguson 20 & 30; assembled with 9/16" NF hex nut.	S160401ZBU (2) 86401 2	-	0.4
S16040200	16402 0	Check chain clevis; used to fasten check chain to tractor; replaces Ford 9N582; fits MF 20, 30, 35, 40 and 50	-	S160402YBU (2) 91649 0	0.1

\* Number in parenthesis indicates bag or clamshell quantity





# LINKAGE

## Lift Arms & Lift Arm Parts

Category 1 lift arms and Category 1, 2 and 3 lift arm repair ends. See also the Forged and Weld-on Ball Ends section on page 8.



SKU NUMBER	UPC ITEM NO. 0-87196-	DESCRIPTION	WEIGHT (lbs.)
S03030500	03305 0	Category 1 right or left hand forged lift arm; fits all Ferguson models, Ford 2N, 8N, 9N, NAA, Massey-Ferguson 35, 50, Oliver 550 and Oliver 3-point conversion, John Deere 1010; 7/8" pin holes; 31-3/4" ball centers; 34-1/2" overall length; painted black	11.7
S03032200	03322 7	Category 1 forged right or left hand straight lift arm repair end; 7/8" pin hole; 4" overall length	1.6
S03032300	03323 4	Category 1 forged bent lift arm repair end; 7/8" pin hole; 5-3/8" overall length	2.0
S03032400	03324 1	Category 2 forged bent lift arm repair end; 1-1/8" pin hole; 5-1/2" overall length	2.7
S03032500	03325 8	Category 2 forged right or left straight lift arm repair end; 1-1/8" pin hole; 5" overall length	2.8
S03033000	03330 2	Category 3 forged straight lift arm repair end; 1-7/16" pin hole; 5-3/8" overall length	3.0
S01050200	01502 5	Category 1 lift arm leveling assembly; 18-1/2" closed; 25" open length; 7/8" NF thread diameter; replaces Ford NCA577A	6.0

## Stabilizer Pins

Stabilizer stub pins for SpeeCo, Ford, Ferguson and other stabilizer kits. Yellow zinc dichromate plated.



SKU NUMBER	UPC ITEM NO. 0-87196-	PIN DIAMETER	USABLE LENGTH	OVERALL LENGTH	THREAD DIAMETER	BAG NO. * UPC NO. 0-81796-	CLAM. NO. * UPC NO. 0-87196-	WEIGHT (lbs.)
S07010100	07101 4	7/8"	1/2"	3-1/4"	7/8" NF	-	-	0.8
S07080100	07801 3	7/8"	3/8"	2-5/8"	5/8" NF	S070801ZBU (2) 87801 9	S070801YBU (2) 97801 6	0.3
S070801A0	07802 0	7/8"	3/8"	2-5/8"	5/8" NF	-	-	0.3
S07080500	07805 1	7/8"	1-1/4"	3-1/8"	5/8" NF	-	S070805YBU (2) 97805 4	0.4
S070805A0	07806 8	7/8"	1-1/4"	3-1/8"	5/8" NF	-	-	0.3
S07080700	07807 5	7/8"	1/2"	2-5/8"	5/8" NF	-	-	0.3
S070807A0	07830 3	7/8"	1/2"	2-5/8"	5/8" NF	-	-	0.3
S07080800	07808 2	7/8"	11/16"	3-1/8"	3/4" NF	-	-	0.4

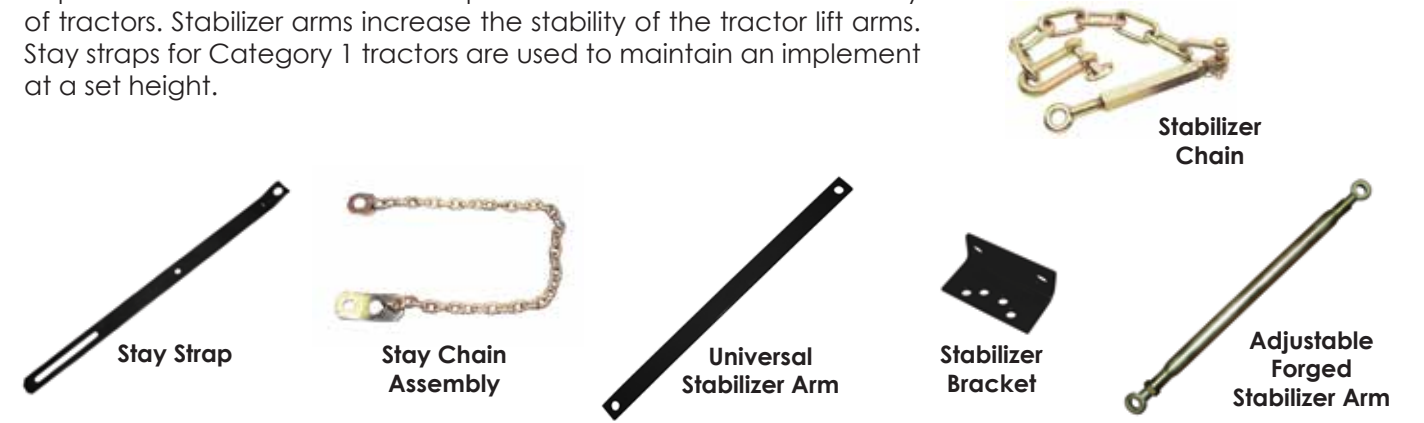
\* Number in parenthesis indicates bag or clamshell quantity



# LINKAGE

## Stabilizer Arms, Brackets and Chains

Replacement stabilizer arms for SpeeCo stabilizer kits and a variety of tractors. Stabilizer arms increase the stability of the tractor lift arms. Stay straps for Category 1 tractors are used to maintain an implement at a set height.



SKU NUMBER	UPC ITEM NO. 0-87196-	DESCRIPTION	WEIGHT (lbs.)
S05010100	05101 6	Upper stay strap for Category 1; fits all Ferguson models, Ford 2N, 8N, 9N, NAA, 600, 700, 800, 900, Oliver 550 and all Oliver 3-point conversions, Massey-Ferguson 35 and 50; painted black	2.8
S05010200	05102 3	Lower stay strap for Category 1; fits all Ferguson models, Ford 2N, 8N, 9N, NAA, 600, 700, 800, 900, Oliver 550 and all Oliver 3-point conversions, and Massey-Ferguson 35 and 50; painted black	2.4
S05020100	20521 1	Stay chain assembly; fits Category 1 pins; fastens to top link pin on tractor and to lift arm pin on equipment; requires two per tractor; yellow zinc plated	3.2
S06020100	06201 2	Right or left universal stabilizer arm; 7/8" pin holes on 31-9/16" centers; fits SpeeCo S06010100* stabilizer kit; painted black	6.0
S06020200	06202 9	Right or left universal stabilizer arm; replaces Massey-Ferguson ST96362358; 7/8" pin holes on 33-1/8" centers; painted black	6.4
S06026000	06260 9	Heavy duty adjustable forged stabilizer arm; fits all Ferguson models, Ford 2N, 8N, 9N, NAA, 600, Massey-Ferguson 35, 50, 175, 65, 135, 150, 165, 180; adjustable from 28-1/2" to 36"; 7/8" pin holes; 7/8" NF threads; yellow zinc plated	6.0
S06025100	06251 7	Left stabilizer arm; fits Ford 2000 and 3000; 7/8" pin holes on 31-5/8" centers; painted black	6.0
S06025200	06252 4	Right stabilizer arm; fits Ford 2000 and 3000; 7/8" pin holes on 31-5/8" centers; painted black	6.0
S06025600	06256 2	Universal stabilizer arm; 7/8" pin holes on 31-9/16" and 33-1/8" centers; painted black	6.1
S06030100	06301 9	Right or left universal stabilizer bracket; fits SpeeCo S06010100*, Ferguson and Ford stabilizer kits; accomodates S07080100* stabilizer stub pin; painted black	3.0
S060301C0	06301 9	Stabilizer bracket assembly; includes stabilizer bracket, lynch pin and a stabilizer pin, lock washer and hex nut	3.7
S06040300	06403 0	Pair of universal stabilizer chains for most Category 1 applications; yellow zinc plated	14.0





# LINKAGE

## Draw Pins (Lift Arm Pins)

Forged and adjustable Category 0 through 3 draw pins for a variety of applications. All pins are yellow zinc dichromate plated. See page 72 for a linkage pin countertop assortment.



SKU NUMBER	UPC ITEM NO. 0-87196-	CAT.	DESCRIPTION	PIN DIAM.	USABLE LENGTH	OVERALL LENGTH	THREAD DIAM.	THREAD LENGTH	WEIGHT (lbs.)
S07022000	07220 2	0	Adjustable; universal	5/8"	Adjustable	3-7/8"	5/8" NF	2"	0.4
S07022800	07228 8	0	Forged; universal	5/8"	1-7/16"	3-7/8"	5/8" NF	1-1/8"	0.4
S07022100	07221 9	0 to 1	To work Cat. 0 implements on Cat. 1 tractor; adjustable	7/8"	1-3/4"	4-1/2"	5/8" NF	2"	0.6
S07022400	07224 0	1 to 0	To work Cat. 1 implements on Cat. 0 tractor; adjustable	5/8"	2"	5"	7/8" NF	2-1/4"	0.6
S07020200	07202 8	1	Adjustable; universal	7/8"	Adjustable	5"	7/8" NF	2-5/8"	1.1
S07020800	07208 0	1	Forged; universal	7/8"	1-3/4"	5-1/2"	7/8" NF	1-5/8"	1.1
S07021900	07219 6	1	Adjustable; universal; extra long	7/8"	Adjustable	6-1/4"	7/8" NF	3-1/2"	1.3
S07024500	07245 5	1	Forged; extra long	7/8"	2-1/4"	6-1/2"	7/8" NF	2-1/4"	1.3
S07024700	07247 9	1	Forged; replaces Ford 103283, MF662459M1, MF00955-7-7/8	7/8"	2"	5"	5/8" NF	1-1/2"	0.9
S07024800	07248 6	1	Forged; replaces Ford 131010, 195425M1, D0955-4-1/2	7/8"	1-3/4"	4-1/2"	5/8" NF	5/8"	0.8
S07024600	07246 2	1 to 2	Forged; extra long to work Cat. 1 implements on Cat. 2 tractor	1-1/8"	2-1/4"	6-5/16"	7/8" NF	2-1/4"	1.5
S070208A0			Blank without nut						
S07024000	07240 0	1 to 2	Forged; to work Cat. 1 implements on Cat. 2 tractor	1-1/8"	1-13/16"	5-1/4"	7/8" NF	1-5/8"	1.5
S07024900	07249 3	1 & 2	Forged; universal	1-1/8" & 7/8"	2-1/16" both	8"	1" NF	1-1/4"	1.9
S07020100	07201 1	2	Adjustable; universal	1-1/8"	Adjustable	6-1/8"	1-1/8" NF	3-3/8"	2.3
S07021200	07212 7	2	Forged; universal	1-1/8"	1-3/4"	6-1/8"	1-1/8" NF	2-3/8"	2.3
S07020600	07206 6	2 to 1	Forged; to work Cat. 2 implements on Cat. 1 tractor	7/8"	1-3/4"	5-3/4"	1-1/8" NF	2-3/8"	1.8
S07021100	07211 0	2 to 3	Adjustable; to work Cat. 2 implements on Cat. 3 tractor	1-7/16"	Adjustable	6-1/2"	1-1/8" NF	3-3/8"	2.9
S07024300	07243 1	2 to 3	Forged; to work Cat. 2 implements on Cat. 3 tractor	1-7/16"	1-7/8"	5-3/4"	1-1/8" NF	1-1/2"	3.0
S07022900	07229 5	3	Forged; universal	1-7/16"	2"	5-7/8"	1-3/8" NF	1-1/2"	3.5



# LINKAGE

## Clevis Type Draw Pins

For use with implements with yoke type mountings. All pins are yellow zinc dichromate plated.



SKU NUMBER	UPC ITEM NO. 0-87196-	CAT.	TYPE	PIN DIAM.	USABLE LENGTH	OVERALL LENGTH	WEIGHT (lbs.)
S07023400	07234 9	1	Roll pin	7/8"	4-1/2"	6"	0.9
S07023500	07235 6	2	Roll pin	1-1/8"	3-5/16"	4-3/4"	1.2
S07023600	07236 3	2	Roll pin	1-1/8"	4-3/4"	6-1/2"	1.7
S07023700	07237 0	2	Roll pin	1-1/8"	5-3/8"	7"	1.9
S07023800	07238 7	2	Roll pin	1-1/8"	7-3/8"	9"	2.4
S07023900	07239 4	2	Roll pin	1-1/8"	9"	10-3/4"	2.9
S07023000	07230 1	3	Head	1-7/16"	4-11/16"	6"	2.8
S07023100	07231 8	3	Roll pin	1-7/16"	6-1/4"	7-3/4"	3.8
S07025000	07250 9	2 & 3	Head	1-1/8" & 1-7/16"	3-5/8" & 4-1/4"	9-1/4"	3.4
S07025600	07256 1	2	Head	1-1/8"	5"	6"	1.6
S07025700	07257 8	1 & 2	Head	7/8"	3-1/4" & 4-1/2"	9-1/4"	2.0
S07022600	07226 4	1	Head	7/8"	4"	5-1/4"	0.9

## Top Link Pins

Sizes and styles for Category 0 through 3 tractors. Yellow zinc dichromate plated. See page 72 for a linkage pin countertop assortment.



SKU NUMBER	UPC ITEM NO. 0-87196-	CAT.	DESCRIPTION	PIN DIAM.	USABLE LENGTH	OVERALL LENGTH	WEIGHT (lbs.)
S07070600	07706 1	0	Top link pin	5/8"	3"	4-7/16"	0.4
S07070100	07701 6	1	Replaces Ford 9N-560, Ferguson 195647M1	3/4"	2-3/4"	4-1/2"	0.5
S07070200	07702 3	1	Long top link pin; replaces Ferguson 195589M1, AC339942	3/4"	3-7/8"	5-1/2"	0.6
S07071500	07715 3	1	Extra long top link pin; replaces Ford E381T9	3/4"	4-3/4"	6-3/8"	0.8
S07071600	07716 0	2	Replaces Ford C5NN560A, MF185873M91, AC2090149/239888	1"	3-9/16"	5-1/4"	1.2
S07071900	07719 1	2	Replaces Ford E27N995272	1"	3"	4-3/4"	1.1
S07070400	07704 7	2	Replaces Ford C5NN486A	1"	4-3/8"	6"	1.3
S07072000	07720 7	2	Replaces Ford E2016F9, AC345552	1"	5-3/8"	7-1/16"	1.5
S07071100	07711 5	3	Top link pin	1-1/4"	4-5/8"	6-1/2"	2.1



# LINKAGE

## Hitch Pins (Clevis Pins)

An economy hitch pin (clevis pin) for numerous applications. Yellow zinc dichromate plated.



SKU NUMBER	UPC ITEM NO. 0-87196-	PIN DIAM.	USABLE LENGTH	OVERALL LENGTH	WEIGHT (lbs.)
S07100000	07000 0	1/2"	5"	6-3/8"	0.4
S07100100	07001 7	5/8"	5"	6-3/8"	0.6
S07100200	07002 4	3/4"	5"	6-3/8"	0.8
S07100300	07003 1	7/8"	5"	6-3/8"	1.0
S07100400	07004 8	1"	5"	6-3/8"	1.4
S07100500	07005 5	1-1/8"	5"	6-3/8"	1.7

## Fixed Handle Hitch Pins

Forged head hitch pin with fixed handle and zinc plated "R" clip pin. More than 25% stronger than Grade 2. Yellow zinc dichromate plated.



SKU NUMBER	UPC ITEM NO. 0-87196-	PIN DIAM.	USABLE LENGTH	OVERALL LENGTH	CLIP PIN SKU NO.	WEIGHT (lbs.)
S071011WC	70211 6	1/2"	4-1/4"	5-1/4"	S07092300	0.4
S071021WC	70221 5	5/8"	4-1/4"	5-1/4"	S07092400	0.6
S071022WC	70222 2	5/8"	6-1/4"	7-1/4"	S07092400	0.8
S071031WC	70231 4	3/4"	4-1/4"	5-1/2"	S07092500	1.1
S071032WC	70232 1	3/4"	6-1/4"	7-1/4"	S07092500	1.1
S071041WC	70241 3	7/8"	4-1/4"	5-1/4"	S07092500	1.2
S071042WC	70242 0	7/8"	6-1/4"	7-1/4"	S07092500	1.4
S071052WC	70252 9	1"	6-1/4"	7-1/4"	S07092700	2.2
S071062WC	70262 8	1-1/8"	6-1/4"	7-1/4"	S07092700	2.2

# LINKAGE



## Swivel Handle Forged Hitch Pins

Forged head hitch pin with swivel handle and zinc plated "R" clip pin. More than 25% stronger than Grade 2. Yellow zinc dichromate plated. See page 70 for countertop displays and assortments.



SKU NUMBER	UPC ITEM NO. 0-87196-	PIN DIAM.	USABLE LENGTH	OVERALL LENGTH	CLIP PIN SKU NO.	WEIGHT (lbs.)
S071010C0	07010 9	3/8"	4-1/4"	4-3/4"	S07092300	0.2
S071011C0	07011 6	1/2"	4-1/4"	5-3/4"	S07092400	0.4
S071012C0	07012 3	1/2"	6-1/4"	7-3/4"	S07092400	0.5
S071021C0	07021 5	5/8"	4-1/4"	5-3/4"	S07092400	0.6
S071022C0	07022 2	5/8"	6-1/4"	7-3/4"	S07092400	0.8
S071031C0	07031 4	3/4"	4-1/4"	5-3/4"	S07092400	0.9
S071032C0	07032 1	3/4"	6-1/4"	7-3/4"	S07092400	1.1
S071041C0	07041 3	7/8"	4-1/4"	5-3/4"	S07092500	1.2
S071042C0	07042 0	7/8"	6-1/4"	7-3/4"	S07092500	1.4
S071051C0	07051 2	1"	4-1/4"	5-3/4"	S07092700	1.5
S071052C0	07052 9	1"	6-1/4"	7-3/4"	S07092700	1.9
S071062C0	07062 8	1-1/8"	6-1/4"	7-3/4"	S07092800	2.4
S071072C0	07072 7	1-1/4"	6-1/4"	7-3/4"	S07092800	2.9
S07114500	07145 8	3/8"	3-1/2"	5"	S07092400	0.30
S07114800	07148 9	1/2"	3-1/2"	4-7/8"	S07092400	0.45

## Forged Hitch Pins with Chain

Forged head swivel handle hitch pin with chain and 1/4" lynch pin. Yellow zinc dichromate plated.



SKU NUMBER	UPC ITEM NO. 0-87196-	PIN DIAM.	USABLE LENGTH	OVERALL LENGTH	WEIGHT (lbs.)
S071011CL	70116 4	1/2"	4-1/4"	5-3/4"	0.5
S071012CL	70117 1	1/2"	6-1/4"	7-3/4"	0.6
S071021CL	70126 3	5/8"	4-1/4"	5-3/4"	0.7
S071022CL	70127 0	5/8"	6-1/4"	7-3/4"	0.9
S071031CL	70136 2	3/4"	4-1/4"	5-3/4"	1.0
S071032CL	70137 9	3/4"	6-1/4"	7-3/4"	1.2
S071042CL	70147 8	7/8"	6-1/4"	7-3/4"	1.6
S071052CL	70157 7	1"	6-1/4"	7-3/4"	2.0
S071062CL	70167 6	1-1/8"	6-1/4"	7-3/4"	2.5
S071072CL	70177 5	1-1/4"	6-1/4"	7-3/4"	3.0





# LINKAGE

## Grey Head Forged Hitch Pins

Designed for today's demanding applications, these one piece, grade 8 performance, forged hitch pins are made from high strength steel and heat treated. Pin has black powder coating with a grey vinyl coated head and handle. Zinc plated "R" clip pin included. See page 70 for a grey head hitch pin countertop assortment.



SKU NUMBER	UPC ITEM NO. 0-80235-	PIN DIAM.	USABLE LENGTH	OVERALL LENGTH	WEIGHT (lbs.)
S01700	01700 4	1/2"	3-5/8"	6-5/8"	0.65
S01701	01701 1	5/8"	4"	7"	0.90
S01702	01702 8	5/8"	6"	9"	1.08
S01703	01703 5	3/4"	4"	7"	1.16
S01704	01704 2	3/4"	6-1/2"	9-1/2"	1.45
S01706	01706 6	7/8"	6-1/2"	9-1/2"	1.84
S01708	01708 0	1"	7"	10"	2.44
S01710	01710 3	1-1/8"	7"	10"	2.97
S01712	01712 7	1-1/4"	7"	10"	3.58
S01714	01714 1	1-1/2"	8-1/2"	11-1/2"	5.66

## Blue Head Hitch Pins

Our premium, heat treated, grade 8 performance hitch pin made from alloy steel is designed for the toughest applications. Pin has black powder coating with a blue vinyl coated head and handle. Zinc plated "R" clip pin included. See page 70 for a blue head hitch pin countertop assortment.



SKU NUMBER	UPC ITEM NO. 0-87196-	PIN DIAM.	USABLE LENGTH	OVERALL LENGTH	CLIP PIN SKU NO.	WEIGHT (lbs.)
S70081100	70811 8	1/2"	3-5/8"	6-5/8"	S07092300	0.7
S70082100	70821 7	5/8"	4"	7"	S07092400	0.9
S70082200	70822 4	5/8"	6"	9"	S07092400	1.0
S70083100	70831 6	3/4"	4"	7"	S07092500	1.2
S70083200	70832 3	3/4"	6-1/2"	9-1/2"	S07092500	1.2
S70084100	70841 5	7/8"	4-1/4"	7-1/4"	S07092500	1.4
S70084200	70842 2	7/8"	6-1/2"	9-1/2"	S07092500	1.9
S70085100	70851 4	1"	4-3/4"	7-3/4"	S07092700	1.9
S70085200	70852 1	1"	7"	10"	S07092700	2.4
S70086200	70862 0	1-1/8"	7"	10"	S07092700	3.0
S70087200	70872 9	1-1/4"	7"	10"	S07092700	3.0
S70088200	70882 8	1-1/2"	8-1/2"	11-1/2"	S07092800	5.8



# LINKAGE

## Red Head Hitch Pins

Designed for today's demanding applications, these one piece, grade 5 performance, forged hitch pins are made from high strength steel and heat treated. Pin has black powder coating with a red vinyl coated head and handle. Zinc plated "R" clip pin included. See page 70 for a red head hitch pin countertop assortment.



SKU NUMBER	UPC ITEM NO. 0-87196-	PIN DIAM.	USABLE LENGTH	OVERALL LENGTH	CLIP PIN SKU NO.	WEIGHT (lbs.)
S70051100	70511 7	1/2"	3-5/8"	6-5/8"	S07092300	0.7
S70052100	70521 6	5/8"	4"	7"	S07092400	0.9
S70052200	70522 3	5/8"	5-3/4"	9"	S07092400	1.1
S70053100	70531 5	3/4"	4"	7"	S07092500	1.1
S70053200	70532 2	3/4"	6-1/2"	9-1/2"	S07092500	1.5
S70054100	70541 4	7/8"	4-1/4"	7-1/4"	S07092500	1.4
S70054200	70542 1	7/8"	6-1/2"	9-1/2"	S07092500	1.9
S70055100	70551 3	1"	4-3/4"	7-3/4"	S07092700	1.9
S70055200	70552 0	1"	7-1/2"	10"	S07092700	2.6
S70055300	70553 7	1"	12"	12-5/8"	S07092700	3.3
S70056200	70562 9	1-1/8"	8-1/2"	11-1/2"	S07092700	3.3
S70057200	70572 8	1-1/4"	8-1/2"	11-1/2"	S07092700	4.1
S70057300	70573 5	1-1/4"	12"	12"	S07092800	5.0
S70058200	70582 7	1-1/2"	8-1/2"	11-1/2"	S07092800	5.0
S70058300	70583 4	1-1/2"	13"	13-5/8"	S07092800	7.6
S70059000	70590 2	1-3/4"	8-1/2"	8-1/2"	S07090800	8.0
S70059500	70595 7	2"	8-1/2"	8-1/2"	S07090800	9.8

## Safety-Lock Hitch Pins

Spring steel wire fits in the groove on the pin to secure it. Yellow zinc dichromate plated.



SKU NUMBER	UPC ITEM NO. 0-87196-	PIN DIAM.	USABLE LENGTH	OVERALL LENGTH	WEIGHT (lbs.)
S071011SP	70311 3	1/2"	4"	5-1/2"	0.5
S071021SP	70321 2	5/8"	4"	5-1/2"	0.7
S071031SP	70331 1	3/4"	4"	5-1/2"	1.0
S071032SP	70332 8	3/4"	6"	7-1/2"	1.2
S071042SP	70342 7	7/8"	6"	7-1/2"	1.5
S071052SP	70352 6	1"	6"	7-1/2"	1.9



# LINKAGE

## Handle-Lok Hitch Pins

Spring steel wire holds pin in place. Grooved pin to secure wire. Clear zinc finish. High carbon steel pin.



SKU NUMBER	UPC ITEM NO. 0-87196-	DESCRIPTION	PIN DIAM.	USABLE LENGTH	BAG NO.* UPC NO. 0-87196-	WEIGHT (lbs.)
S07114000	07140 3	Handle-Lok hitch pin – large	1/2"	3-1/2"	-	0.50
S07114100	07141 0	Handle-Lok hitch pin – small	1/4"	1-3/4"	S071013ZBU (2) 87113 3	0.05
S07114200	07142 7	Handle-Lok hitch pin – small	1/4"	2-1/8"	S071014ZBU (2) 87114 0	0.05
S07114300	07143 4	Handle-Lok hitch pin – small	5/16"	2-1/4"	S071015ZBU (2) 87115 7	0.10
S07114400	07144 1	Handle-Lok hitch pin – small	5/16"	2-1/2"	S071016ZBU (2) 87116 4	0.10
S07114600	07146 5	Handle-Lok hitch pin – small	3/8"	1-1/2"	S071017ZBU (2) 87117 1	0.10
S07114700	07147 2	Handle-Lok hitch pin – small	3/8"	2-3/8"	S071018ZBU (2) 87118 8	0.15

\* Number in parenthesis indicates bag or clamshell quantity

## Double Lok™ Hitch Pins

These grade 5 performance hitch pins are designed with a quick release handle to allow for easy removal, and a double lock mechanism to ensure the pin remains in place. The pin and handle are powder coated with zinc plated locks. See page 73 for the Double Lok hitch pin display stand.



SKU NUMBER	UPC ITEM NO. 0-87196-	PIN DIAM.	USABLE LENGTH	WEIGHT (lbs.)
S70042100	70421 9	5/8"	4-1/2"	2.0
S70043100	70431 8	3/4"	4-1/2"	2.3
S70043200	70432 5	3/4"	6"	2.6
S70044100	70441 7	7/8"	4-1/2"	2.6
S70044200	70442 4	7/8"	6"	2.9
S70045200	70452 3	1"	6"	3.3
S70046200	70462 2	1-1/8"	7"	4.1
S70047200	70472 1	1-1/4"	7"	4.6
S70049200	70492 9	1-1/2"	8"	5.7

# LINKAGE



## Drop Forged Hitch Pins

One piece, drop-forged, grade 5 performance hitch pins are made from high strength steel and heat treated. Zinc plated "R" clip pin included. Yellow zinc dichromate plated.



SKU NUMBER	UPC ITEM NO. 0-87196-	PIN DIAM.	USABLE LENGTH	OVERALL LENGTH	HANDLE	CLIP PIN SKU NO.	WEIGHT (lbs.)
S70020400	70604 6	7/16"	3-1/2"	5-11/32"	Wire	S07092400	0.3
S70021100	70611 4	1/2"	3-1/2"	5-11/32"	Wire	S07092400	0.4
S70032100	70721 0	5/8"	3-3/4"	6-15/16"	Solid	S07092500	0.6
S70032200	70722 7	5/8"	6"	9-3/16"	Solid	S07092500	0.8
S70033100	70731 9	3/4"	4"	7-7/16"	Solid	S07092500	0.9
S70033200	70732 6	3/4"	6-1/4"	9-7/16"	Solid	S07092500	1.2
S70034100	70741 8	7/8"	4-1/4"	7-3/4"	Solid	S07092700	1.2
S70034200	70742 5	7/8"	6-1/2"	10-11/16"	Solid	S07092700	1.7
S70035100	70751 7	1"	4-3/4"	8-17/32"	Solid	S07092700	1.6
S70035200	70752 4	1"	6-3/4"	10-17/32"	Solid	S07092700	2.2
S70036200	70762 3	1-1/8"	7"	11"	Solid	S07092800	2.8
S70037200	70772 2	1-1/4"	7"	11-1/8"	Solid	S07092800	3.6
S70038200	70782 1	1-3/8"	7"	11-27/32"	Solid	S07090800	4.6
S70039200	70792 0	1-1/2"	8"	12-23/32"	Solid	S07090800	6.6

## Premium Hitch Pins

One piece zinc plated forged pin made of high carbon steel and heat treated to Grade 5 performance for the toughest applications. Spring wire swivel handle. "R" clip pin included. Meets or exceeds OEM specifications. See page 70 for a premium hitch pin countertop assortment.



SKU NUMBER	UPC ITEM NO. 0-80235-	PIN DIAM.	USABLE LENGTH	WEIGHT (lbs.)
S01600	01600 7	1/2"	4"	0.4
S01601	01601 4	5/8"	4"	0.6
S01602	01602 1	5/8"	6"	0.8
S01603	01603 8	3/4"	4-1/4"	0.9
S01604	01604 5	3/4"	6-1/4"	1.1
S01605	01605 2	7/8"	4-1/4"	1.2
S01606	01606 9	7/8"	6-1/2"	1.6
S01607	01607 6	1"	6-3/4"	2.0
S01608	01608 3	1-1/8"	7"	2.6
S01609	01609 0	1-1/4"	7"	3.1





# LINKAGE

## Bent Hitch Pins

These pins have numerous farm, lawn and garden and industrial applications. Complete with zinc plated "R" clip pin. Yellow zinc dichromate plated.



SKU NUMBER	UPC ITEM NO. 0-87196-	PIN DIAM.	USABLE LENGTH	CLIP PIN SKU NO.	WEIGHT (lbs.)
S07111800	71118 7	3/8"	3"	S07092300	0.18
S07112000	71120 0	1/2"	2-1/2"	S07092400	0.30
S07111100	71111 8	1/2"	3"	S07092400	0.34
S07112200	71122 4	1/2"	4"	S07092400	0.40
S07112300	71123 1	1/2"	5"	S07092400	0.46
S07111200	71112 5	5/8"	3"	S07092400	0.50
S07112600	71126 2	5/8"	4"	S07092400	0.64
S07112700	71127 9	5/8"	5"	S07092400	0.76
S07111300	71113 2	3/4"	3-1/2"	S07092400	0.80
S07112900	71129 3	3/4"	4-1/2"	S07092400	1.02
S07113000	71130 9	3/4"	5"	S07092400	1.06

## Twist Lock Pins

Unique, self-locking design is superior to the commonly used "R" clip pin. High carbon spring steel.



SKU NUMBER	UPC ITEM NO. 0-87196-	WIRE DIAM.	FITS ON SHAFT DIAM.	LOOP DIAM.	BAG NO.* UPC ITEM NO. 0-87196-	CLAM. NO.* UPC ITEM NO. 0-87196-	WEIGHT (lbs.)
S07099100	07991 1	0.2	1/2", 9/16", 5/8"	1-1/8"	S070991ZBU (2) 87991 7	-	0.04

\* Number in parenthesis indicates bag or clamshell quantity

## Compression Clip Pin



SKU NUMBER	UPC ITEM NO. 0-87196-	WIRE DIAM.	OVERALL LENGTH	FITS PIN DIAM.	BAG NO.* UPC ITEM NO. 0-87196-	CLAM. NO.* UPC ITEM NO. 0-87196-	WEIGHT (lbs.)
S07090300	07903 4	5/16"	3-1/2"	Fits 5/16" hole	S070903ZBU (2) 87903 0	-	0.08

\* Number in parenthesis indicates bag or clamshell quantity

www.speeco.com • Toll Free: 800-525-8322 • FAX: 303-278-3432



# LINKAGE

## Universal Clevis Pins

Can be used as an adjustable replacement pin. Multiple holes allow user to cut off excess length. Yellow zinc dichromate plated. See page 71 for a universal clevis pin countertop assortment.



SKU NUMBER	UPC ITEM NO. 0-87196-	PIN DIAM.	OVERALL LENGTH	BAG NO.* UPC NO. 0-87196-	CLAM. NO.* UPC NO. 0-87196-	WEIGHT (lbs.)
S07041100	07411 4	1/4"	2"	S070411ZDU (4) 87411 0	S070411YDU (4) 97411 7	0.02
S07041200	07412 1	5/16"	2"	S070412ZDU (4) 87412 7	S070412YCU (3) 97412 4	0.04
S07041300	07413 8	3/8"	2"	S070413ZBU (2) 87413 4	S070413YBU (2) 97413 1	0.05
S07041400	07414 5	7/16"	2"	S070414ZBU (2) 87414 1	S070414YBU (2) 97414 8	0.08
S07041500	07415 2	1/2"	2"	S070415ZBU (2) 87415 8	S070415YCU (3) 97415 5	0.11
S07041600	07416 9	1/2"	2-1/2"	S070416ZBU (2) 87416 5	S070416YBU (2) 97416 2	0.14
S07041700	07417 6	7/16"	2-1/2"	-	S070417YCU (3) 97417 9	0.13
S07041800	07418 3	7/16"	3"	-	S070418YBU (2) 97418 6	0.14
S07041900	07419 0	1/2"	3"	-	S070419YBU (2) 97419 3	0.15
S07042000	07420 6	5/8"	3"	-	S070420YBU (2) 97420 9	0.16
S07042100	07421 3	3/4"	3"	-	-	0.16

\* Number in parenthesis indicates bag or clamshell quantity

## Clevis Pins

SKU NUMBER	UPC ITEM NO. 0-87196-	DESCRIPTION	WEIGHT (lbs.)
S175002SP	18102 7	3/16" x 2" pins; bag of 2	0.04
S175004SP	18104 1	5/16" x 2" adjustable pins; bag of 2	0.09



### Clevis Pin Assortments

SKU NUMBER	UPC ITEM NO. 0-87196-	DESCRIPTION	WEIGHT (lbs.)
S175001SP	18101 0	Adjustable clevis pin assortment; sizes from 3/16" to 3/8"; bag of 14. Contains 4- 3/16" x 2" pins, 4- 1/4" x 2" pins, 4- 5/16" x 2" pins, 2- 3/8" x 2" pins.	0.19
S175114SP	18183 6	Clevis pin assortment kit; 50 pieces. Contains 4- 1/4" x 1-1/4" pins, 4- 1/4" x 1-1/2" pins, 4- 1/4" x 1-5/8" pins, 4- 1/4" x 1-3/4" pins, 4- 1/4" x 1-7/8" pins, 4- 1/4" x 2" pins, 4- 1/4" x 2-1/4" pins, 4- 1/4" x 2-1/2" pins, 1- 5/16" x 1-5/8" pins, 2- 5/16" x 1-3/4" pins, 2- 5/16" x 1-7/8" pins, 2- 5/16" x 2" pins, 2- 5/16" x 2-1/4" pins, 1- 5/16" x 2-1/2" pins, 1- 5/16" x 2-7/8" pins, 1- 5/16" x 3" pins, 1- 3/8" x 1-7/8" pins, 1- 3/8" x 2" pins, 1- 3/8" x 2-1/4" pins	1.94



# LINKAGE

## Twist Clip Pins

Easy to attach and holds more securely than the commonly used "R" clip pin.



SKU NUMBER	UPC ITEM NO. 0-87196-	WIRE DIAM.	OVERALL LENGTH	FITS PIN DIAM.	BAG NO.* UPC ITEM NO. 0-87196-	CLAM. NO.* UPC ITEM NO. 0-87196-	WEIGHT (lbs.)
S07099500	07995 9	1/8"	2-1/2"	1/2" to 7/8"	-	S070995YFU (6) 97995 2	0.02
S07099600	07996 6	5/32"	3-1/32"	5/8" to 1"	-	S070996YEU (5) 97996 9	0.04
S07099700	07997 3	3/16"	4-3/32"	3/4" to 1-1/4"	-	S070997YBU (2) 97997 6	0.06

\* Number in parenthesis indicates bag or clamshell quantity

## "R" Clip Pins

Available in the most popular sizes for farm and other applications. Yellow zinc dichromate plated spring wire. See page 72 for countertop displays and assortments.



SKU NUMBER	UPC ITEM NO. 0-87196-	WIRE DIAM.	OVERALL LENGTH	FITS PIN DIAM.	BAG NO.* UPC ITEM NO. 0-87196-	CLAM. NO.* UPC ITEM NO. 0-87196-	WEIGHT (lbs.)
S07092200	07922 5	1/16"	1-9/16"	3/8" to 1/2"	S070922ZJU (10) 87950 4	S070922YIU (9) 97922 8	0.01
S07092300	07923 2	3/32"	1-5/8"	1/4" to 1/2"	S070923ZLU (12) 87923 8	S070923YIU (9) 97923 5	0.01
S07092400	07924 9	1/8"	1-15/16"	1/2" to 3/4"	S070924ZHU (8) 87924 5	S070924YFU (6) 97924 2	0.02
S07092500	07925 6	5/32"	2-15/16"	5/8" to 1"	S070925ZGU (7) 87925 2	S070925YEU (5) 97925 9	0.04
S07092700	07927 0	3/16"	3-3/4"	7/8" to 1-1/4"	S070927ZCU (3) 87927 6 S070927ZEU (5) 88427 0	S070927YBU (2) 97927 3	0.08
S07092800	07928 7	1/4"	4"	3/4" to 1"	-	S070928YBU (2) 97928 0	0.10
S07092900	07929 4	5/16"	5-15/16"	1" to 1-7/16"	S070929ZBU (2) 87929 0	S070929YAU (1) 97929 7	0.30
S070929S0	07956 0	5/16"	4-1/8"	1" to 1-7/16"	-	-	0.20
S07130100	07131 1	3/32"	2-5/16"	1/4" to 5/8"	-	-	0.01
S07130200	07132 8	5/64"	1-3/4"	5/16" to 1/2"	S071302ZHU (8) 87999 3	-	0.01

\* Number in parenthesis indicates bag or clamshell quantity

# LINKAGE



## Detent Pins

Ball detent allows for fast and easy insertion and removal of pin. Replaces pins that require a cotter pin. Available in most popular sizes. Zinc plated carbon steel.



S07128100

### 3/16" Diameter

SKU NUMBER	UPC ITEM NO. -0-87196-	USABLE LENGTH	OVERALL LENGTH	WEIGHT (oz.)
S07120200	71202 3	1"	1-3/8"	0.2
S07120400	71204 7	1-1/2"	1-7/8"	0.3
S07120600	71206 1	2"	2-3/8"	0.4

### 1/4" Diameter

SKU NUMBER	UPC ITEM NO. -0-87196-	USABLE LENGTH	OVERALL LENGTH	WEIGHT (oz.)
S07121200	71212 2	1"	1-7/16"	0.4
S07121400	71214 6	1-1/2"	1-15/16"	0.6
S07121600	71216 0	2"	2-7/16"	0.6
S07121800	71218 4	2-1/2"	2-15/16"	0.7
S07122000	71220 7	3"	3-7/16"	0.9

### 5/16" Diameter

SKU NUMBER	UPC ITEM NO. -0-87196-	USABLE LENGTH	OVERALL LENGTH	WEIGHT (oz.)
S07122700	71227 6	1"	1-17/32"	0.6
S07122900	71229 0	1-1/2"	2-1/32"	0.8
S07123100	71231 3	2"	2-17/32"	1.0
S07123300	71233 7	2-1/2"	3-1/32"	1.2
S07123400	71234 4	3"	3-17/32"	1.3

### 3/8" Diameter

SKU NUMBER	UPC ITEM NO. -0-87196-	USABLE LENGTH	OVERALL LENGTH	WEIGHT (oz.)
S07124800	71248 1	1-1/2"	2-1/8"	1.1
S07125000	71250 4	2"	2-5/8"	1.4
S07125200	71252 8	2-1/2"	3-1/8"	1.7
S07125300	71253 5	3"	3-5/8"	1.9
S07125700	71257 3	4"	4-5/8"	2.5

### 7/16" Diameter

SKU NUMBER	UPC ITEM NO. -0-87196-	USABLE LENGTH	OVERALL LENGTH	WEIGHT (oz.)
S07126500	71265 8	2"	2-23/32"	1.9
S07126900	71269 6	3"	3-23/32"	2.6



S07128400

### 1/2" Diameter

SKU NUMBER	UPC ITEM NO. -0-87196-	USABLE LENGTH	OVERALL LENGTH	WEIGHT (oz.)
S07128000	71280 1	1"	1-25/32"	1.7
S07128100	71281 8	1-1/2"	2-9/32"	2.2
S07128200	71282 5	2"	2-25/32"	2.5
S07128300	71283 2	2-1/2"	3-9/32"	3.2
S07128400	71284 9	3"	3-25/32"	3.4
S07128600	71286 3	4"	4-25/32"	4.4





# LINKAGE

## Lynch Pins

Fasteners for numerous farm and other applications. Yellow zinc dichromate plated except for the S07091300 and S07091400 which have a black powder coated finish. See page 71 for countertop displays and assortments.



S07091300



S07090100



S07090200

SKU NUMBER	UPC ITEM NO. 0-87196-	DESCRIPTION	PIN DIAM.	USABLE LENGTH	SHANK LENGTH	OVERALL LENGTH	BAG NO.* UPC ITEM NO. 0-87196-	CLAM. NO.* UPC ITEM NO. 0-87196-	WEIGHT (lbs.)
S07091900	07919 5	Standard	3/16"	1"	1-3/8"	1-5/8"	S070919ZBU (2) 87919 1	S070919YDU (4) 97919 8	0.03
S07092000	07920 1	S07091900 with chain and cotter pin	3/16"	1"	1-3/8"	1-5/8"	S070920ZBU (2) 87920 7	-	0.03
S07090100	07901 0	Standard	7/16"	1-1/4"	1-3/4"	2"	S070901ZBU (2) 87901 6 S070901ZJU (10) 88471 3	S070901YDU (4) 97901 3 -	0.10
S07090200	07902 7	S07090100 with chain and cotter pin	7/16"	1-1/4"	1-3/4"	2"	-	S070902YBU (2) 97902 0	0.20
S07090400	07904 1	Standard	1/4"	1-1/4"	1-3/4"	2-1/8"	S070904ZBU (2) 87904 7	S070904YDU (4) 97904 4	0.07
S07090500	07905 8	Short shank	7/16"	1-1/4"	1-3/8"	1-3/4"	S070905ZBU (2) 87905 4	-	0.09
S07091300	07913 3	Heavy duty; fits Cat. 1, 2 and 3 pins	7/16"	1-1/2"	1-3/4"	2-1/8"	S070913ZBU (2) 87913 9	S070913YBU (2) 97962 4	0.13
S07091400	07914 0	S07091300 with chain and cotter pin	7/16"	1-1/2"	1-3/4"	2-1/8"	-	S070914YBU (2) 97914 3	0.18
S07091500	07915 7	Standard	5/16"	1-1/4"	1-3/4"	2-1/8"	S070915ZBU (2) 87915 3	S070915YDU (4) 97915 0	0.10
S07091600	07916 4	Standard	3/8"	1-1/4"	1-3/4"	2-1/8"	S070916ZBU (2) 87916 9	-	0.10
S07090800	07908 9	Long; fits Cat. 1, 2 and 3 pins	7/16"	1-3/4"	2"	2-5/16"	S070908ZBU (2) 87908 5	-	0.14
S070908E0	20798 7	Long shank	7/16"	1-1/4"	2"	2-5/16"	-	-	0.12
S07098400	07984 9	12" chain and hook; fits Cat. 1 & 2	5/16"	1-3/8"	5/16"	13-3/8"	-	-	0.15
S07098500	07985 0	12" chain and cotter pin; fits Cat. 1 & 2	1/4"	12"	1/4"	12-1/4"	-	-	0.15

\* Number in parenthesis indicates bag or clamshell quantity

# HARDWARE & ACCESSORIES



Most popular fasteners and small hardware items for farm, home and ranch projects. Packaged in poly bags and clear plastic box kits for easier merchandising.

## Spring Pins



S175017SP

SKU NUMBER	UPC ITEM NO. 0-87196-	DESCRIPTION	WEIGHT (lbs.)
S175017SP	18115 7	5/16" x 2-1/2"; bag of 1	0.04



S175104SP

### Spring Pin Assortments

SKU NUMBER	UPC ITEM NO. 0-87196-	DESCRIPTION	WEIGHT (lbs.)
S175010SP	18108 9	Spring pin assortment; bag of 45; sizes from 3/32" to 3/8" diameter. Contains 1- 3/8" x 2-1/2"; 1- 3/8" x 1-1/2"; 2- 5/16" x 1/2"; 2- 5/16" x 1-3/8"; 2- 5/16" x 2-1/2"; 2- 1/4" x 2"; 2- 1/4" x 1-1/2"; 3- 3/16" x 1-1/2"; 3- 3/16" x 1"; 3- 3/16" x 3/4"; 5- 3/16" x 1/2"; 3- 5/32" x 1"; 3- 5/32" x 3/4"; 5- 1/8" x 1-1/2"; 5-1/8" x 1; 3- 3/32"	0.02
S175104SP	18174 4	Spring pin assortment kit; 170 pieces. Contains 25- 3/16" x 1-1/2"; 15- 1/4" x 1-1/2"; 25-1/4" x 1-1/4"; 25- 3/16" x 1"; 30- 1/8" x 1-1/2"; 50- 1/8" x 1"	0.96



# HARDWARE & ACCESSORIES

## Machine Bushings



S175055SP

SKU NUMBER	UPC ITEM NO. 0-87196-	DESCRIPTION	WEIGHT (lbs.)
S175052SP	18142 3	5/8" x 14 GA; bag of 12	0.10
S175053SP	18143 0	3/4" x 14 GA; bag of 7	0.11
S175054SP	18144 7	7/8" x 14 GA; bag of 7	0.13
S175055SP	18145 4	1" x 14 GA; bag of 6	0.13
S175056SP	18146 1	1-1/8" x 14 GA; bag of 4	0.11
S175057SP	18147 8	1-1/4" x 14 GA; bag of 4	0.12
S175058SP	18148 5	1-3/8" x 14 GA; bag of 3	0.14
S175059SP	18149 2	1-1/2" x 14 GA; bag of 3	0.14
S175060SP	18150 8	1-3/4" x 14 GA; bag of 2	0.11

### Machine Bushing Assortments

SKU NUMBER	UPC ITEM NO. 0-87196-	DESCRIPTION	WEIGHT (lbs.)
S175050SP	18140 9	Machine bushing assortment; sizes from 3/4" to 1-1/2" x 14 GA bushings; bag of 20. Contains 5- 3/4" ID; 5- 1" ID; 5- 1-1/4" ID; 5- 1-1/2" ID	0.55
S175113SP	18182 9	Machine bushing assortment kit; 92 pieces. Contains 10- 1/2" x 14 GA bushings, 20- 5/8" x 14 GA bushings, 20- 3/4" x 14 GA bushings, 10- 7/8" x 14 GA bushings, 10- 1" x 14 GA bushings, 8- 1-1/4" x 14 GA bushings, 5- 1-3/8" x 14 GA bushings, 5- 1-1/2" x 14 GA bushings, 4- 3/4" x 14 GA bushings	2.05

## Machine Bushings - Wide



S175174SP

SKU NUMBER	UPC ITEM NO. 0-87196-	DESCRIPTION	WEIGHT (lbs.)
S175173SP	18241 3	1" ID; 18 GA; bag of 5	0.15
S175174SP	18242 0	1-1/8" ID; 18 GA; bag of 5	0.16
S175175SP	18243 7	1-1/4" ID; 18 GA; bag of 5	0.18
S175176SP	18244 4	1-3/8" ID; 18 GA; bag of 5	0.22
S175180SP	18248 2	1" ID; 14 GA; bag of 5	0.20
S175181SP	18249 9	1-1/8" ID; 14 GA; bag of 5	0.22
S175182SP	18250 5	1-1/4" ID; 14 GA; bag of 5	0.23
S175183SP	18251 2	1-1/2" ID; 14 GA; bag of 5	0.46
S175184SP	18252 9	1-3/4" ID; 14 GA; bag of 5	0.51
S175185SP	18253 6	2" ID; 14 GA; bag of 5	0.55
S175186SP	18254 3	2-1/8" ID; 14 GA; bag of 5	0.58

# HARDWARE & ACCESSORIES



## Quick Repair Bushings



S175233SP

SKU NUMBER	UPC ITEM NO. 0-87196-	DESCRIPTION	WEIGHT (lbs.)
S175230SP	18233 8	3/4" ID; 1-3/4" OD x 1/8"; bag of 1	0.16
S175232SP	18235 2	1" ID; 2" OD x 1/8"; bag of 1	0.09
S175233SP	18236 9	1-1/8" ID; 2-1/8" OD x 1/8"; bag of 1	0.09
S175234SP	18237 6	1-1/4" ID; 2-1/4" OD x 1/8"; bag of 1	0.10
S175235SP	18238 3	1-3/8" ID; 2-3/8" OD x 1/8"; bag of 1	0.10
S175236SP	18255 0	1-1/2" ID; 2-1/2" OD x 1/8"; bag of 1	0.11
S175237SP	18267 3	1-3/4" ID; 2-3/4" OD x 1/8"; bag of 1	0.13
S175238SP	18287 1	2" ID; 3" OD x 1/8"; bag of 1	0.13

## Machinery Key Stock



S175072SP

SKU NUMBER	UPC ITEM NO. 0-87196-	DESCRIPTION	WEIGHT (lbs.)
S175072SP	18159 1	Square key stock; 1/4" x 1-1/2"; bag of 4	0.10

### Key Stock Assortments

SKU NUMBER	UPC ITEM NO. 0-87196-	DESCRIPTION	WEIGHT (lbs.)
S175070SP	18157 7	Square key stock assortment; sizes 1/8" sq. to 3/8" sq. x 1-1/2" key stocks; bag of 17. Contains 3- 3/8" sq. x 1-1/2"; 3- 5/16" sq. x 1-1/2"; 3- 1/4" sq. x 1-1/2"; 3- 3/16" sq. x 1-1/2"; 5- 1/8" sq. x 1-1/2"	0.44
S175106SP	18176 8	Machinery key assortment kit; 70 piece. Contains 20- 1/8" x 1/8" x 1-1/2" keys, 12- 3/16" x 1/4" x 1-1/2" keys, 8- 5/16" x 5/16" x 1-1/2" keys, 12- 3/16" x 3/16" x 1-1/2" keys, 10- 1/4" x 1/4" x 1-1/2" keys, 8- 3/8" x 3/8" x 1-1/2" keys	1.64



S175106SP



S175070SP





# HARDWARE & ACCESSORIES

## Straight Cotter Pins



S175023SP

SKU NUMBER	UPC ITEM NO. 0-87196-	DESCRIPTION	WEIGHT (lbs.)
S175021SP	18118 8	3/32" x 1"; bag of 30	0.08
S175022SP	18119 5	1/8" x 1"; bag of 20	0.08
S175023SP	18120 1	1/8" x 1-1/2"; bag of 15	0.09
S175024SP	18121 8	5/32" x 1-1/2"; bag of 10	0.10
S175025SP	18122 5	3/16" x 2"; bag of 6	0.08
S175026SP	18123 2	1/4" x 2"; bag of 3	0.08



S175112SP



S175020SP

### Cotter Pin Assortments

SKU NUMBER	UPC ITEM NO. 0-87196-	DESCRIPTION	WEIGHT (lbs.)
S175020SP	18117 1	Straight cotter pin assortment; bag of 26; sizes from 1/16" to 3/8" diameter. Contains 2- 3/8" x 2-1/2"; 2- 5/16" x 2"; 2- 1/4" x 2-1/2"; 2- 1/4" x 1-1/2"; 2- 1/4" x 1-1/4"; 2- 3/16" x 1"; 2- 3/16" x 2"; 2- 5/32" x 2"; 2- 5/32" x 1"; 2- 1/8" x 1-1/2"; 2- 1/8" x 1"; 2- 3/32" x 1-1/2"; 2- 1/16" x 5/8"	0.56
S175112SP	18181 2	Cotter pin assortment kit; 420 pieces. Contains 100- 1/16" x 1" pins, 100- 3/32" x 1" pins, 100- 1/8" x 1" pins, 60- 1/8" x 1-1/2" pins, 40- 5/32" x 1" pins, 40- 5/32" x 1-1/2" pins, 20- 3/16" x 2" pins	1.89
S07097900	07979 9	Cotter pin assortment; 100 pieces of popular sizes	1.7

# HARDWARE & ACCESSORIES



## Hairpin Cotter Pins



S175116SP

SKU NUMBER	UPC ITEM NO. 0-87196-	DESCRIPTION	WEIGHT (lbs.)
S175115SP	18184 3	3/16 - 1/4" hairpin cotter pins; bag of 7	0.02
S175116SP	18185 0	5/16 - 3/8" hairpin cotter pins; bag of 5	0.03
S175117SP	18186 7	3/8 - 1/2" hairpin cotter pins; bag of 2	0.02
S175118SP	18187 4	1/2 - 5/8" hairpin cotter pins; bag of 2	0.04
S175119SP	18188 1	5/8 - 7/8" hairpin cotter pins; bag of 2	0.07
S175120SP	18189 8	7/8 - 1-1/4" hairpin cotter pin; bag of 1	0.07



S175111SP

### Cotter Pin Assortments

SKU NUMBER	UPC ITEM NO. 0-87196-	DESCRIPTION	WEIGHT (lbs.)
S175111SP	18180 5	Hairpin cotter pin assortment; 130 pieces. Contains 20- 3/16" DIA pins, 20- 1/4" DIA pins, 20- 5/16" DIA pins, 20- 3/8" DIA pins, 20- 1/2" DIA pins, 20- 5/8" DIA pins, 10- 1" DIA pins. Comes in large clamshell box	1.82
S175121SP	18190 4	Hairpin cotter pin assortment; 16 piece bag. Contains 4- 5/16" pins, 4- 3/8 to 7/16" pins, 4- 1/2" pins, 4- 5/8 to 3/4" pins	0.23

## Cultivator Washer



SKU NUMBER	UPC ITEM NO. 0-80235-	DESCRIPTION	WEIGHT (lbs.)
S00108	00108 9	Washer, cultivator Locking with gripping teeth	0.1



# HARDWARE & ACCESSORIES

## Grease Fittings



S175046SP

SKU NUMBER	UPC ITEM NO. 0-87196-	DESCRIPTION	WEIGHT (lbs.)
S175041SP	18132 4	1/4"-28 straight; bag of 5	0.04
S175042SP	18133 1	3/16" drive; bag of 5	0.03
S175043SP	18134 8	5/16" drive; bag of 4	0.04
S175044SP	18135 5	1/4"-28" 45°; bag of 3	0.05
S175046SP	18137 9	1/8" pipe straight; bag of 5	0.06
S175047SP	18138 6	1/8" pipe 45°; bag of 3	0.07



S175103SP

### Grease Fitting Assortments

SKU NUMBER	UPC ITEM NO. 0-87196-	DESCRIPTION	WEIGHT (lbs.)
S175040SP	18131 7	Grease fitting assortment; bag of 8. Contains 2- 45° fittings, 2- 90° fittings, 4- straight fittings	0.08
S175102SP	18172 0	Grease fitting assortment; 32 pieces. Contains 6- 1/4"-28 STR, 3- 1/4"-28 45°, 3- 1/4"-28 90°, 4- 3/16" drive, 4- 5/16" drive, 6- 1/8" pipe STR, 3- 1/8" pipe 45°, 3- 1/8" pipe 90°. Comes in small clamshell box	0.53
S175103SP	18173 7	Metric grease fitting assortment; 31 pieces. Contains 6- M6 STR, 3- M6 90°, 4- M6 45°, 3- M8 45°, 6- M8 STR, 3- M8 90°, 2- M10 STR, 2- M10 45°, 2- M10 90°. Comes in small clamshell box	0.48

## Set Screws



S175105SP

### Set Screw Assortments

SKU NUMBER	UPC ITEM NO. 0-87196-	DESCRIPTION	WEIGHT (lbs.)
S175091SP	18168 3	Hex set screws assortment; 36 piece bag. Contains 6- #10-24 x 1/4" set screws, 6- 1/4"-20 x 1/4" set screws, 6- 1/4"-20 x 3/4" set screws, 6- 5/16-18 x 5/16" set screws, 6- 3/8-16 x 3/8" set screws, 6- 1/2-13 x 1/2" set screws	0.21
S175105SP	18175 1	Hex socket set screw assortment; 205 pieces. Contains 85- #10-24 x 1/4" set screws, 40- 1/4-20 x 1/4" set screws, 25- 1/4-20 x 3/8" set screws, 25- 5/16-18 x 3/8" set screws, 20- 3/8-16 x 3/8" set screws, 10- 3/8-16 x 1/2" set screws. Comes in small clamshell box	0.65
S175107SP	18177 5	Square head set screw assortment; 60 pieces. Contains 20- 1/4-20 x 3/4" set screws, 10- 5/16-18 x 3/4" set screws, 8- 5/16-18 x 1" set screws, 10- 3/8-16 x 3/4" set screws, 8- 3/8-16 x 1-1/4" set screws, 4- 1/2-12 x 1". Comes in small clamshell box	1.49

# HARDWARE & ACCESSORIES



## Retaining Rings

SKU NUMBER	UPC ITEM NO. 0-87196-	DESCRIPTION	WEIGHT (lbs.)
S175109SP	18179 9	Retaining ring assortment kit; 55 piece. Contains 10- 1/4" rings, 10- 5/16" rings, 1- 3/8" rings, 7- 7/16" rings, 7- 1/2" rings, 5- 5/8" rings, 3- 3/4" rings, 3- 1" rings	0.16



S175109SP

## E Rings

SKU NUMBER	UPC ITEM NO. 0-87196-	DESCRIPTION	WEIGHT (lbs.)
S175090SP	18167 6	E-ring clip assortment; bag of 90; 1/16" to 3/4"	0.11
S175101SP	18171 3	E-ring assortment kit; box of 125. Contains 35- 1/16" e-rings, 15- 3/16" e-rings, 10- 3/8" e-rings, 5- 5/8" e-rings, 30- 1/8" e-rings, 15- 1/4" e-rings, 10- 1/2" e-rings, 5- 3/4" e-rings	0.21



S175090SP

## Woodruff Keys

SKU NUMBER	UPC ITEM NO. 0-87196-	DESCRIPTION	WEIGHT (lbs.)
S175093SP	18170 6	Woodruff key assortment; bag of 30. Contains 4- 3/16" x 3/4" keys, 4- 3/16" x 7/8" keys, 10- 1/2" x 1/8", 8- 5/8" x 1/8" keys, 4- 1" x 1/4" keys	0.23
S175108SP	18178 2	Woodruff key assortment kit; 72 pieces. Contains 18- #3 keys, 12- #5 keys, 12- #6 keys, 12- #9 keys, 10- A keys, 8- #15 keys	1.71



S175108SP





# HARDWARE & ACCESSORIES

## Steering Wheel Spinners

Wheel spinners to fit most tractors and trucks. Includes shallow and deep mount spoke adapters. Black Bakelite, polished aluminum and vinyl colors available. See page 73 for countertop displays and assortments.



S160426YAU



S16087400

SKU NUMBER	UPC ITEM NO. 0-87196-	DESCRIPTION	CLAM. NO. * UPC NO. 0-87196-	WEIGHT (lbs.)
S16085100	16851 6	Black Bakelite knob with steel base	S160851YAU (1) 96851 2	0.5
S16086100	16861 5	Aluminum knob with chrome plated base	S160861YAU (1) 96861 1	0.5
S16087000	16870 7	Blue vinyl coated knob with chrome plated base	S160870YAU (1) 96870 3	0.7
S16087100	16871 4	Black vinyl coated knob with chrome plated base	S160871YAU (1) 96871 0	0.7
S16087200	16872 1	Red vinyl coated knob with chrome plated base	S160872YAU (1) 96872 7	0.7
S16087300	16873 8	Yellow vinyl coated knob with chrome plated base	S160873YAU (1) 96873 4	0.7
S16087400	16874 5	Green vinyl coated knob with chrome plated base	S160874YAU (1) 96874 1	0.7
-	-	Deluxe wheel spinner; smooth spinning design and comfortable ergonomic handle	S160426YAU (1) 16464 8	0.7

\* Number in parenthesis indicates clamshell quantity

## Hydraulic Cylinder Pins

Pins for hydraulic cylinders and jacks in popular sizes. Standard cylinder clips included. Will accommodate "R" clip pin. Yellow zinc dichromate plated.



SKU NUMBER	UPC ITEM NO. 0-87196-	DIAM.	USABLE LENGTH	OVERALL LENGTH	CLAM. NO. ** UPC NO. 0-87196-	WEIGHT (lbs.)
S07071200	07712 2	1"	2"	2-3/4"	-	0.6
S07073600	07736 8	1"	2-1/8"	2-15/16"	-	0.5
S07072900	07729 0	1"	2-3/4"	3-9/16"	S070729YBU (2) 97729 3	0.8
S07074300	07743 6	1"	2-7/8"	3-11/16"	-	0.8
S07074400	07744 3	1"	3"	3-13/16"	-	0.9
S07071300	07713 9	1"	3-1/8"	3-15/16"	-	0.9
S07074600	07746 7	1"	3-1/4"	4-1/16"	-	0.9
S07073100*	07731 3	1-1/8"	1-15/16"	2-3/8"	-	0.8
S07075000*	07750 4	1-1/4"	3-1/4"	4-1/16"	-	1.4

\* Clip pins provided

\*\* Number in parenthesis indicates clamshell quantity

# HARDWARE & ACCESSORIES



## Raincaps

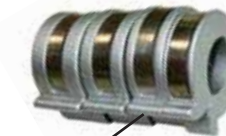
Fits most tractors, equipment and engines. Opens with the slightest pressure and closes the instant exhaust stops. Easy one bolt installation. Gray powder coat finish.



SKU NUMBER	UPC ITEM NO. 0-87196-	MINIMUM EXHAUST O.D.	WEIGHT (lbs.)
S16090300	16903 2	1-1/2"	0.56
S16090400	16904 9	1-3/4"	0.58
S16090500	16905 6	2"	0.90
S16090600	16906 3	2-1/4"	0.92
S16090700	16907 0	2-1/2"	1.01
S16090800	16908 7	2-3/4"	1.04
S16090900	16909 4	3"	1.08
S16091000	16910 0	3-1/2"	1.30
S16091100	16911 7	4"	1.60
S16091200	16912 4	4-1/4"	1.62
S16091300	16913 1	4-1/2"	1.68
S16091400	16914 8	5"	1.82

## Cylinder Stroke Control Segments

Designed to control the stroke on air or hydraulic cylinders. Clamshell package.



Finger Tabs



S39100500



S39100600

Comes in a clamshell Package



SKU NUMBER	UPC ITEM NO. 0-87196-	DESCRIPTION	SEGMENTS	WEIGHT (lbs.)
S39102000	39120 4	Fits 7/8" & 1-1/16" diameter shafts; aluminum; unique "finger tab" design for easier installation and removal.	3/4", 1", 1-1/4", 1-1/2"	2.3
S39103000	39130 3	Fits 1-1/8", 1-1/4", 1-3/8" & 1-1/2" diameter shafts; aluminum; unique "finger tab" design for easier installation and removal.	3/4", 1", 1-1/4", 1-1/2"	2
S39104000	39140 2	Fits 1-3/4", 1-7/8" & 2" diameter shafts; aluminum; unique "finger tab" design for easier installation and removal.	1", 1-1/2", 2", 4"	4.4
S39100500	39105 1	Fits 1-3/8" to 1-1/2" diameter shafts; aluminum	3/4", 1", 1-1/4", 1-1/2"	1.5
S39100600	39160 0	Fits 1-1/8" to 1-1/4" diameter shafts; aluminum	3/4", 1", 1-1/4", 1-1/2"	1.5



# HARDWARE & ACCESSORIES

## Kentucky Cow Bells

Produces a DULL TONE that can be heard from far distances. Steel welded construction. For livestock control and use at sporting events. Powder coated.



SKU NUMBER	UPC ITEM NO. -0-87196-	DESCRIPTION	HEIGHT	WEIGHT (lbs.)
S90071500	90715 3	Kentucky - 0K	6-1/2"	1.6
S90070100	90701 6	Kentucky - 1K	6"	0.8
S90070200	90702 3	Kentucky - 2K	4-7/8"	0.8
S90070300	90703 0	Kentucky - 3K	4-1/4"	0.7
S90070400	90704 7	Kentucky - 4K	3-3/4"	0.6
S90070500	90705 4	Kentucky - 5K	3-1/8"	0.4
S90070600	90706 1	Kentucky - 6K	2-5/8"	0.3
S90070700	90707 8	Kentucky - 7K	1-5/8"	0.2

## Long Distance Cow Bells

Produces a SHARP TONE that can be heard at long distances. One piece steel construction. For livestock control or use at sporting events. Powder coated.



SKU NUMBER	UPC ITEM NO. 0-87196-	DESCRIPTION	HEIGHT	WEIGHT (lbs.)
S90070800	90708 5	Long distance - 8LD	1-5/8"	0.2
S90070900	90709 2	Long distance - 9LD	1-15/16"	0.2
S90071000	90710 8	Long distance - 10LD	2-13/16"	0.4
S90071100	90711 5	Long distance - 11LD	2-15/16"	0.5
S90071200	90712 2	Long distance - 12LD	3-9/16"	0.9
S90071400	90714 6	Long distance - 14LD	4-5/16"	1.2

# HARDWARE & ACCESSORIES



## Sports Bells

Designed with a larger handle for an easier grip. Great for sporting events. Available with or without a vinyl grip.



SKU NUMBER	UPC ITEM NO. 0-87196-	DESCRIPTION	HEIGHT	WEIGHT (lbs.)
S90072300	90723 8	Sports bell, red vinyl grip handle	6.75	1.05
S90072200	90722 1	Sports bell, black	6.5	1.00



## Insulated Closed Clamps

Insulated closed clamps with zinc plated finish.

Only available in bags of 5



SKU NUMBER	UPC ITEM NO. 0-80235-	CLAMPING DIAMETER	HOLE DIAMETER	CENTER TO CENTER	WIDTH	HOLE CENTER TO END	CAP GAUGE	SLOT LENGTH	WEIGHT (lbs.)	
S21150	21150 1	3/16"	9/32"	1/2"	1/2"	5/16"	1/32"	0.032	3/8"	0.09
S21151	21151 8	1/4"	9/32"	17/32"	1/2"	5/16"	1/32"	0.032	3/8"	0.09
S21152	21152 5	5/16"	9/32"	9/16"	1/2"	5/16"	1/32"	0.032	3/8"	0.06
S21153	21153 2	3/8"	9/32"	19/32"	1/2"	5/16"	1/16"	0.032	3/8"	0.01
S21154	21154 9	3/8"	13/32"	23/32"	3/4"	7/16"	1/16"	0.032	1/2"	0.02
S21155	21155 6	1/2"	9/32"	31/32"	1/2"	5/16"	1/16"	0.048	3/8"	0.02
S21156	21156 3	1/2"	13/32"	25/32"	3/4"	7/16"	1/16"	0.048	1/2"	0.09
S21157	21157 0	5/8"	9/32"	23/32"	1/2"	5/16"	1/16"	0.048	3/8"	0.02
S21158	21158 7	5/8"	13/32"	27/32"	3/4"	7/16"	1/16"	0.048	1/2"	0.09
S21159	21159 4	3/4"	9/32"	25/32"	1/2"	5/16"	1/16"	0.048	3/8"	0.01
S21160	21160 0	3/4"	13/32"	29/32"	3/4"	7/16"	1/16"	0.048	1/2"	0.09
S21161	21161 7	7/8"	13/32"	31/32"	3/4"	7/16"	1/16"	0.048	1/2"	0.30
S21162	21162 4	1"	9/32"	29/32"	1/2"	5/16"	1/16"	0.048	3/8"	0.03
S21163	21163 1	1"	13/32"	1-1/32"	3/4"	7/16"	1/16"	0.048	1/2"	0.06
S21164	21164 8	1-1/4"	13/32"	1-5/32"	3/4"	7/16"	1/16"	0.048	1/2"	0.35
S21165	21165 5	1-1/2"	13/32"	1-5/32"	3/4"	7/16"	1/16"	0.048	1/2"	0.03





# HARDWARE & ACCESSORIES

## Muffler Clamp



SKU NUMBER	UPC ITEM NO. 0-87196-	DESCRIPTION	CLAM. NO.* UPC NO. 0-87196-	WEIGHT (lbs.)
S10090100	10901 4	Muffler clamp assembly; replaces Ford 9N5251; fits Ford 2N, 8N, 9N, MF 20, 30, 40 and 50	S100901YAU (1) 97963 1	0.6

\* Number in parenthesis indicates bag or clamshell quantity

## Drill Drag Chain



SKU NUMBER	UPC ITEM NO. 0-87196-	DESCRIPTION	WEIGHT (lbs.)
S25080200	25802 6	Drill drag chain; 3-1/2" ring diameter; 1/2" ring thickness; fits most standard seed drills	2.1

## Stake Pocket



SKU NUMBER	UPC ITEM NO. 0-87196-	DESCRIPTION	WEIGHT (lbs.)
S10080500	10805 5	Stake pocket; 1-1/2" x 3-1/4" opening x 2-1/2" high; black powder coat finish	1.0

## Hydraulic Reservoir



SKU NUMBER	UPC ITEM NO. 0-87196-	DESCRIPTION	WEIGHT (lbs.)
S39081100	39811 1	Hydraulic reservoir; 5 gallon capacity; 18" long by 8-3/4" wide by 8-3/8" tall; a variety of uses including log splitters and various hydraulic equipment	17.7

# HARDWARE & ACCESSORIES



## Shaft Set Collars

Precision machined for exact fit. Size is stamped on each collar. Allen head set screw provided. Yellow zinc dichromate plated.



SKU NUMBER BULK	SKU NUMBER* BAGGED	UPC ITEM NO. 0-87196-		BORE SIZE	OUTSIDE DIAM.	WIDTH	SET SCREW SIZE	WEIGHT (ozs.)
		BULK	BAGGED					
S16080100	S160801ZBU (2)	16801 1	86801 0	1/4"	1/2"	9/32"	10-32x1/8	0.3
S16080200	-	16802 8	-	5/16"	5/8"	11/32"	10-32x1/8	0.3
S16080300	S160803ZBU (2)	16803 5	86803 4	3/8"	3/4"	3/8"	1/4-20x3/16	0.6
S16080400	S160804ZBU (2)	168004 2	86804 1	7/16"	7/8"	7/16"	1/4-20x1/4	0.8
S16080500	S160805ZBU (2)	16805 9	86805 8	1/2"	1"	1/2"	1/4-20x1/4	1.3
S16080700	S160807ZBU (2)	16807 3	86807 2	5/8"	1-1/8"	9/16"	5/16-18x1/4	1.9
S16080800	-	16808 0	-	11/16"	1-3/8"	5/8"	5/16-18x1/4	3.2
S16080900	S160809ZBU (2)	16809 7	86809 6	3/4"	1-3/8"	5/8"	5/16-18x1/4	2.9
S16081100	S160811ZBU (2)	16811 0	86811 9	7/8"	1-1/2"	5/8"	5/16-18x5/16	3.2
S16081200	S160812ZBU (2)							
S16081300	S160813ZBU (2)	16813 4	86813 3	1"	1-5/8"	5/8"	5/16-18x5/16	3.5
S16081500	S160815ZAU (1)	16815 8	86815 7	1-1/8"	1-3/4"	5/8"	5/16-18x5/16	3.8
S16081600	-	16812 7	86812 6	15/16"	1-5/8"	5/8"	5/16-18x5/16	3.8
S16081700	S160817ZAU (1)	16817 2	86817 1	1-1/4"	2"	11/16"	3/8-16x3/8	5.7
S16081900	S160819ZAU (1)	16819 6	86819 5	1-3/8"	2-1/8"	3/4"	3/8-16x3/8	6.7
S16082100	S160821ZAU (1)	16821 9	86821 8	1-1/2"	2-1/4"	3/4"	3/8-16x3/8	7.4
S16082300	-	16823 3	-	1-3/4"	2-3/4"	7/8"	1/2-13x1/2	12.2
S16082400	-	16824 0	-	1-7/8"	2-3/4"	7/8"	1/2-13 x 1/2	0.8
S16082600	-	16826 3	-	2"	3"	7/8"	1/2-13x1/2	14.4

\* Number in parenthesis indicates bag quantity

## Hitch Balls

Class I, II, III and IV chrome hitch balls.



SKU NUMBER	UPC ITEM NO. 0-87196-	DESCRIPTION	WEIGHT (lbs.)
S10050400	10504 7	1-7/8" chrome hitch ball with 3/4" stud; 1-3/4" stud length; VESC Class I	1.6
S10060400	10604 4	2" chrome hitch ball with 3/4" stud; 1-3/4" stud length; VESC Class II	1.8
S10060800	10608 2	2" chrome hitch ball with 1" stud; 2-1/8" stud length; VESC Class III	2.5
S10070300	10703 4	2-5/16" chrome hitch ball with 1-1/4" stud; 2-1/2" stud length; VESC Class IV	4.0

\* Number in parenthesis indicates bag or clamshell quantity



# HARDWARE & ACCESSORIES

## Tool Boxes

Easily mounts to tractors or other equipment. Hardware and brackets for universal mounting included. Packaged in an attractive four color display box.



SKU NUMBER	UPC ITEM NO. 0-87196-	DESCRIPTION	WEIGHT (lbs.)
S16132000	16320 7	16" portable/mountable toolbox; red	8.0
S16132500	16325 2	20" portable/mountable toolbox; red	10.0
S161320B0	16355 9	16" portable/mountable toolbox; black	8.0
S161325B0	16365 8	20" portable/mountable toolbox; black	10.0
S161320G0	16360 3	16" portable/mountable toolbox; green	8.0
S161325G0	16379 5	20" portable/mountable toolbox; green	10.0

## Hay Hooks



SKU NUMBER	UPC ITEM NO. 0-87196-	DESCRIPTION	WEIGHT (lbs.)
S47010500	47105 0	Hay hook; 11" overall length; painted red	1.1
S47010600	47106 7	Hay hook; 17" overall length; painted red	1.5
S47010700	47107 4	Hay hook, 9" overall length, wood handle; painted black	0.5
S47010800	47108 1	Hay hook with leather guard, 16" overall length, wood handle; painted black	1.1

# HARDWARE & ACCESSORIES



## Harrow Teeth

Replacement harrow teeth for a variety of implement manufacturers. Heat treated point.



Square, no head



Square, with head



Full diamond, no head



Full diamond, with head



Full diamond, with thread

SKU NUMBER	UPC ITEM NO. 0-87196-	DESCRIPTION	WIDTH	LENGTH	WEIGHT (lbs.)
S56023100	56231 4	Square, no head	5/8"	8"	0.85
S56023200	56232 1	Square, with head	5/8"	10"	1.05
S56023400	56234 5	Square, with head	5/8"	12"	1.25
S56023600	56236 9	Square, with head	5/8"	14"	1.45
S56024000	56240 6	Square, no head	3/4"	8"	1.13
S56024200	56242 0	Square, no head	3/4"	9"	1.25
S56024700	56247 5	Square, with head	3/4"	11"	1.52
S56024900	56249 9	Square, with head	3/4"	12"	1.80
S56025100	56251 2	Square, with head	3/4"	14"	2.10
S56022000	56220 8	Full diamond, with head	5/8" x 7/8"	8"	0.62
S56022100	56221 5	Full diamond, no head	5/8" x 7/8"	8"	0.58
S56021700	56217 8	Full diamond, 1/2" thread	5/8" x 7/8"	8"	0.60
S56021600	56216 1	Full diamond, 7/16" thread	5/8" x 7/8"	8"	0.60
S56021800	56218 5	Full diamond, 7/16" thread	5/8" x 7/8"	8-1/2"	0.60
S56021900	56219 2	Full diamond, 1/2" thread	5/8" x 7/8"	8-1/2"	0.60
S56024500	56245 1	N188676 (John Deere)	3/4"	10"	1.45





# HARDWARE & ACCESSORIES

## PTO Adapters & Accessories

SpeeCo designed and engineered PTO adapters. Yellow zinc dichromate plated.



SKU NUMBER	UPC ITEM NO. 0-87196-	DESCRIPTION	MALE SPLINE	FEMALE SPLINE	EXTENDS PTO	OVERALL LENGTH	MAX H.P.	WEIGHT (lbs.)
S16060000	16600 0	Sleeve increaser; Ford 231082	1-3/8" x 6	1-1/8" x 6	0	2"	75	0.2
S16060200	16602 4	Sleeve increaser; all tractors except Ford	1-3/8" x 6	1-1/8" x 6	0	2-1/4"	75	0.2
S16060300	16603 1	PTO spline adapter; converts 21 spline 1,000 RPM to 6 spline 540 RPM	1-3/8" x 6	1-3/8" x 21	3-1/4"	5-7/8"	75	2.0
S16060400	16604 8	Universal reducer	1-1/8" x 6	1-3/8" x 6	3-5/16" *	5-1/8"	75	1.4
S16060500	16605 5	PTO increaser	1-3/8" x 6	1-1/8" x 6	3-5/8" *	5-1/2"	75	1.3
S16060600	16606 2	PTO short increaser	1-3/8" x 6	1-1/8" x 6	1-1/8" *	3-1/4"	75	0.6
S16060700	16607 9	PTO spline adapter; 20 to 6 spline; set screw lock	1-3/8" x 6	1-3/4" x 20	4-5/8" *	7-1/2"	75	6.1
S16060800	16608 6	PTO extender	1-3/8" x 6	1-3/8" x 6	3-5/16" *	5-1/8"	75	2.2
S16061000	16610 9	PTO spline adapter with quick-release; converts 21 spline 1,000 RPM to 6 spline 540 RPM	1-3/8" x 6	1-3/8" x 21	3-7/8"	6-1/2"	75	2.5
S16061100	16611 6	PTO spline adapter with quick-release; converts 6 spline 540 RPM to 21 spline 1,000 RPM	1-3/8" x 21	1-3/8" x 6	4-1/8" *	6-1/2"	75	2.5
S16061200	16612 3	PTO extender with quick-release	1-3/8" x 6	1-3/8" x 6	4-3/8"	6-1/2"	75	2.8
S16061300	16613 0	PTO extender with quick-release; 21 spline 1,000 RPM	1-3/8" x 21	1-3/8" x 21	4-1/8"	5-7/8"	75	3.2
S16061500	16615 4	PTO spline adapter; 20 to 21 spline; set screw lock	1-3/8" x 21	1-3/4" x 20	4-5/8"	7"	75	4.2
S16061700	16617 8	PTO adapter; heavy duty	1-3/4" x 1-3/8"	1-3/4" x 20	4-5/8"	7-1/2"	75	4.2
S16061800	16618 5	PTO adapter spline; 20 to 21 spline heavy duty	1-3/8" x 21	1-3/4" x 20	4-5/8"	7-1/2"	75	4.3
S16064600	16646 8	Spline adapter; extended length for use with Gresen pump	1-3/8" x 6	1-3/8" x 6	11-5/8"	15"	75	6.0
S16063000	16630 7	Over-running clutch; maximum 1,000 RPM operating speed	1-3/8" x 6	1-3/8" x 6	3-13/16"	6-1/2"	75	5.0
S16063100	16631 4	Over-running clutch; maximum 1,000 RPM operating speed	1-3/8" x 6	1-1/8" x 6	3-13/16"	6-1/2"	75	5.0
S16066000**	16660 4	Over-running clutch with quick-release; maximum 1,000 RPM operating speed	1-3/8" x 6	1-3/8" x 6	4-1/2"	6-3/4"	75	7.2
S16066100**	16661 1	Over-running clutch with quick-release; maximum 1,000 RPM operating speed	1-3/8" x 6	1-1/8" x 6	4-1/2"	6-3/4"	75	7.1

\*Approximate length  
\*\*Painted yellow

www.speeco.com • Toll Free: 800-525-8322 • FAX: 303-278-3432

# HARDWARE & ACCESSORIES



## PTO Accessories



S16062600



S171321ZEU

SKU NUMBER	UPC ITEM NO. 0-87196-	DESCRIPTION	BAG NO.* UPC NO. 0-87196-	CLAM. NO.* UPC NO. 0-87196-	WEIGHT (lbs.)
S16061900	16619 2	Yoke pin assembly; fits most American PTO yokes	-	S160619YAU (1) 96619 8	0.1
S16062600	16626 0	Yoke pin assembly for 1-3/8" x 21 spline or spline adapter; welded yoke only	-	-	0.2
S17132100	17321 3	Roll pin for over-running clutches; 5/16" x 2"	S171321ZEU (5) 17321 3	S171321YBU (2)	0.1

\* Number in parenthesis indicates bag or clamshell quantity

Solutions for country living®



# HARDWARE & ACCESSORIES

## Lock Pins

Numerous farm, lawn and garden, and industrial applications. Round and square loop styles. Yellow zinc dichromate plated.

SKU NUMBER BULK	SKU NUMBER* BAGGED	SKU NUMBER* CLAM.	UPC ITEM NO. 0-87196-			DIAM.	LENGTH	WIRE LOOP	WEIGHT (lbs.)
			BULK	BAGGED	CLAM.				
S07093800	S070938ZBU (2)	S070938YBU (2)	07938 6	87938 2	97938 9	1/4"	1-3/4"	Round	0.06
S07093900	S070939ZBU (2)	S070939YBU (2)	07939 3	87939 9	97965 5	5/16"	2-1/4"	Square	0.20
S07094000	S070940ZBU (2)	S070940YBU (2)	07940 9	07940 9	97964 8	5/16"	2-1/4"	Round	0.10
S07094100	S070941ZBU (2)	S070941YBU (2)	07941 6	87941 2	97941 9	3/8"	2-1/4"	Round	0.14
S07095000	S070950ZBU (2)		07950 8	87950 4		1/4"	1-3/8"	Round	0.06
S07095100	S070951ZBU (2)	S070951YBU (2) S070951YDU (4)	07951 5	87951 1		1/4"	2-1/2"	Round	0.08
S07095200	S070952ZBU (2)	-	07952 2	87952 8		1/4"	2-1/4"	Square	0.08
S07095300	S070953ZBU (2)	-	07953 9	87953 5		1/4"	2-1/2"	Square	0.08
S07095400	S070954ZBU (2)	-	07954 6	87954 2		5/16"	1-3/8"	Round	0.08
S07095500	S070955ZBU (2)	-	07955 3	87955 9		5/16"	1-3/4"	Round	0.08
S07095600	S070956ZBU (2)	-	07956 0	87956 6		5/16"	2-1/2"	Round	0.10
S07095700	S070957ZBU (2)	-	07957 7	87957 3		5/16"	2-1/2"	Square	0.10
S07095800	S070958ZBU (2)	-	07958 4	87958 0		5/16"	3-1/2"	Square	0.14
S07095900	S070959ZBU (2)	S070959YAU (1)	07959 1	87959 7		5/16"	3-15/16"	Square	0.14
S07096000	-	-	07960 7	87960 3		3/8"	1-1/2"	Round	0.11
S07096100	-	-	07961 4	87961 0		3/8"	1-3/4"	Round	0.12
S07096300	S070963ZBU (2)	-	07963 8	87963 4		3/8"	2-1/2"	Round	0.14
S07096400	S070964ZBU (2)	S070964YBU (2)	07964 5	87964 1	97988 4	3/8"	2-1/4"	Square	0.14
S07096500	S070965ZBU (2)	-	07965 2	87965 8		3/8"	2-1/2"	Square	0.16
S07096600	-	S070966YAU (1)	07966 9	87966 5		3/8"	3"	Square	0.16
S07096700	S070967ZBU (2)	-	07967 6	-	97966 2	3/8"	3-7/16"	Square	0.18

\* Number in parenthesis indicates bag or clamshell quantity

SKU NUMBER	UPC ITEM NO. 0-87196-	DESCRIPTION	WEIGHT (lbs.)
S175128SP	18166 9	5/16 x 3-1/4" lock pins, square; bag of 1	0.13



### Lock Pin Assortments

SKU NUMBER	UPC ITEM NO. 0-87196-	DESCRIPTION	WEIGHT (lbs.)
S175122SP	18191 1	Lock pins assortment; bag of 3. Contains 1- 1/4 x 1-3/4" round pins, 1- 5/16 x 1-3/4" round pins, 1- 3/8 x 1-3/4" round pins	0.26

# HARDWARE & ACCESSORIES



SpeeCo designed and engineered (totally forged) straight, twisted, utility and farm clevises with heat treated pins. Total forging provides better grain structure alignment without built-in stress and more consistency in strength, quality and conformity. Clevises, midlinks and drawbar hook have black powder coated finish. Clevis pins are yellow zinc dichromate plated.

## Straight Clevises



SKU NUMBER	UPC ITEM NO. 0-87196-	BODY DIAM.	CLEVIS OPENING	USABLE LENGTH	PIN DIAM.	WORKING LOAD LIMIT (lbs.) **	WEIGHT (lbs.)
S49010300	49103 4	5/8"	7/8"	3-1/4"	1/2"	6,000	1.5
S49010400	49104 1	3/4"	1-5/16"	3-3/4"	5/8"	12,000	2.5
S49010500	49105 8	7/8"	1-5/16"	3-1/4"	3/4"	16,000	3.0
S49010600	49106 5	7/8"	1-5/16"	4-1/4"	3/4"	16,000	3.6
S49010700	49107 2	15/16"	1-7/16"	4-5/8"	7/8"	20,000	4.3
S49010800	49108 9	1"	2-1/8"	5-5/16"	1"	25,000	5.8

## Twisted Clevises



SKU NUMBER	UPC ITEM NO. 0-87196-	BODY DIAM.	CLEVIS OPENING	USABLE LENGTH	PIN DIAM.	WORKING LOAD LIMIT (lbs.) **	WEIGHT (lbs.)
S49020300	49203 1	5/8"	7/8"	3"	1/2"	6,000	1.5
S49020400	49204 8	3/4"	1-5/16"	3-1/2"	5/8"	12,000	2.5
S49020500	49205 5	7/8"	1-5/16"	3"	3/4"	16,000	3.0
S49020600	49206 2	7/8"	1-5/16"	3-7/8"	3/4"	16,000	3.6
S49020700	49207 9	15/16"	1-7/16"	4-1/4"	7/8"	20,000	4.3
S49020800	49208 6	1"	2-1/8"	5"	1"	25,000	5.8

## General Purpose Clevis



SKU NUMBER	UPC ITEM NO. 0-87196-	BODY DIAM.	CLEVIS OPENING	USABLE LENGTH	PIN DIAM.	WORKING LOAD LIMIT (lbs.) **	WEIGHT (lbs.)
S49031200	49312 0	3/4"	2-1/2"	6-3/16"	3/4"	10,000	3.3



\*\* DO NOT EXCEED WORKING LOAD LIMIT. FARM HARDWARE IS NOT FOR LIFTING.





# HARDWARE & ACCESSORIES

## Farm Clevises

Screw pin shackle type used for multiple hitches and crawler tractors.



SKU NUMBER	UPC ITEM NO. 0-87196-	BODY DIAM.	CLEVIS OPENING	USABLE LENGTH	PIN DIAM.	WORKING LOAD LIMIT (lbs.) **	CLAM. NO.* UPC ITEM NO.	WEIGHT (lbs.)
S49040100	49401 1	1/4"	15/32"	1-1/8"	5/16"	1,000	-	0.1
S49040200	49402 8	5/16"	17/32"	1-1/4"	3/8"	2,000	S490402YBU (2) 99402 3	0.2
S49040300	49403 5	3/8"	23/32"	1-7/16"	7/16"	3,000	S490403YAU (1) 99403 0	0.3
S49040400	49404 2	7/16"	3/4"	1-11/16"	1/2"	4,000	S490404YAU (1) 99404 7	0.5
S49040500	49405 9	1/2"	13/16"	1-15/16"	5/8"	6,500	S490405YAU (1) 99405 4	0.7
S49040600	49406 6	5/8"	1-1/16"	2-1/2"	3/4"	9,000	S490406YAU (1) 99406 1	1.5
S49040700	49407 3	3/4"	1-1/4"	3"	7/8"	13,000	S490407YAU (1) 99407 8	2.2
S49040800	49408 0	7/8"	1-7/16"	3-1/4"	1"	15,000	-	3.5
S49040900	49409 7	1"	1-11/16"	3-3/4"	1-1/8"	17,000	-	5.2
S49041000	49410 3	1-1/8"	1-13/16"	4-1/4"	1-1/4"	24,000	-	7.0
S49041100	49411 0	1-1/4"	2"	4-1/2"	1-3/8"	28,000	-	9.5

\* Number in parenthesis indicates clamshell quantity

## Utility Clevises



SKU NUMBER	UPC ITEM NO. 0-87196-	BODY DIAM.	CLEVIS OPENING	USABLE LENGTH	PIN DIAM.	WORKING LOAD LIMIT (lbs.) **	CLAM. NO.* UPC ITEM NO.	WEIGHT (lbs.)
S49030100	49301 4	1/4"	15/32"	7/8"	5/16"	1,000	-	0.1
S49030200	49302 1	5/16"	17/32"	1"	3/8"	1,500	S490302YBU (2) 99302 6	0.2
S49030300	49303 8	3/8"	21/32"	1-1/4"	7/16"	2,000	S490303YAU (1) 99303 3	0.3
S49030400	49304 5	7/16"	23/32"	1-1/2"	1/2"	3,000	-	0.4
S49030500	49305 2	1/2"	13/16"	1-11/16"	5/8"	6,000	S490305YAU (1) 99305 7	0.6
S49030600	49306 9	5/8"	1-1/16"	2"	3/4"	9,000	S490306YAU (1) 99306 4	1.2

\* Number in parenthesis indicates clamshell quantity



**\*\* DO NOT EXCEED WORKING LOAD LIMIT. FARM HARDWARE IS NOT FOR LIFTING.**

# HARDWARE & ACCESSORIES



## Mid-Links



SKU NUMBER	UPC ITEM NO. 0-87196-	CHAIN SIZE	WORKING LOAD LIMIT (lbs.) **	WEIGHT (lbs.)
S49050100	49501 8	1/4" or 5/16"	4,700	0.3
S49050200	49502 5	3/8"	6,600	0.4
S49050300	49503 2	7/16" or 1/2"	11,300	1.0
S49050400	49504 9	5/8"	18,000	1.7

## Tractor Drawbar Grab Hook



SKU NUMBER	UPC ITEM NO. 0-87196-	DESCRIPTION	WORKING LOAD LIMIT (lbs.) **	WEIGHT (lbs.)
S49051600	49516 2	For all tractor drawbars up to 1-5/8" thick; for use with 5/16" to 1/2" chain	9,000	3.1
S49051700	49517 9	Grab hook pin to fit S49051600; 3/4" diameter; 2-1/2" usable length	-	0.6

## T-Handle Clevis Pins

Heat treated replacement pins for all SpeeCo straight and twisted clevises. Yellow zinc dichromate plated.



SKU NUMBER	UPC ITEM NO. 0-87196-	DIAM.	USABLE LENGTH	WEIGHT (lbs.)
S49061100	49611 4	1/2"	2-1/4"	0.4
S49062100	49621 3	5/8"	3-1/8"	0.5
S49063100	49631 2	3/4"	3-1/4"	0.7
S49064100	49641 1	7/8"	3-3/4"	1.2
S49065100	49651 0	1"	4-1/4"	1.5



**\*\* DO NOT EXCEED WORKING LOAD LIMIT. FARM HARDWARE IS NOT FOR LIFTING.**





# HARDWARE & ACCESSORIES

## 5 Gallon Drum Pump

- For use with 5 gallon (20 litre) buckets
- Pumps heavy gear oils
- Has extra long 58" outlet hose and anti-drip nozzle – drain back nozzle holder
- Stainless mesh filter
- For use with oils up to SAE 140 gear oils, heavy lube oils, lubrication oils, synthetic oils
- 14 downstrokes displaces 1 quart
- Standard closure – 2-1/2" 8 TPI bottle thread
- Made from nylon, aluminum and mild steel, with nitrile rubber seals



Bucket Not Included

SKU NUMBER	UPC ITEM NO. 0-80235-	DESCRIPTION	WEIGHT (lbs.)
S05076	05076 6	5 gallon drum pump	2.5

## Bead Breaker

A revolutionary hand tool that makes the dismantling of tires quick and easy.

- Applies up to 5 tons of pressure on the bead
- Portable and small enough to fit into a tool box
- Simple to operate and comes fully assembled
- Construction uses: backhoes, loaders and graders, skid steer loaders, trucks (tube type and tubeless)
- Farm uses: tractor tires (front and rear), implements (manure spreaders, wagons, grain carts)
- Other applications: all terrain vehicles, four wheel drive vehicles, fork lifts & industrial mine tires, wheelbarrows and more
- Patented



SKU NUMBER	UPC ITEM NO. 0-80235-	DESCRIPTION	WEIGHT (lbs.)
S05500	05500 0	Bead breaker	9.9



# HARDWARE & ACCESSORIES

## Fuel Strainer (Sediment) Bowls

Fuel strainers for auto, tractor, power unit and stationary engine use. Works with either gasoline or distillates. Shallow bowl strainers have brass screens. Large bowl strainers have nylon filters with 120 micron capacity. Includes double shut-off needle valve (except for S04002).

SKU NUMBER	UPC ITEM NO. 0-80235-	REPLACES	ITEM	TYPE	INLET	OUTLET	CLAM. NO.* UPC ITEM NO. 0-80235-	WEIGHT (lbs.)
S04000	04000 2	Universal	Strainer	Shallow	1/8" Female	1/8" Female	S34000 (1) 34000 3	0.45
S04001	04001 9	A	Strainer	Shallow	3/8" Male	1/8" Female	S34001 (1) 34001 0	0.55
S04002	04002 6	B	Strainer	Shallow	1/8" Female	1/8" Female	S34002 (1) 34002 7	0.45
S04003	04003 3	C	Strainer	Shallow	3/8" Male & 1/8" Female	1/8" Female	S34003 (1) 34003 4	0.55
S04004	04004 0	Universal	Strainer	Large	1/8" Female	1/8" Female	S34004 (1) 34004 1	0.65
S04005	04005 7	Universal	Strainer	Large	3/8" Male & 1/8" Female	1/8" Female	S34005 (1) 34005 8	0.70
S04006	04006 4	D	Strainer	Large	3/8" Male	1/8" Female	S34006 (1) 34006 5	0.65
S04007	04007 1	E	Strainer fits 1953-54 NAA model tractors (ex. kerosene)				S34007 (1) 34007 2	0.60

\* Number in parenthesis indicates clamshell quantity

- A - John Deere #S-AM3100T  
FITS: M, 40, 320, 330, 420, 430, 440, 1010  
- CASE/INTERNATIONAL HARVESTER #61782C91  
FITS: Cub, Cub Lobo, A, B, Super A, AV, AI, AVI, C, Super C, 100, 130, 140, 154, 184, 185, 184 Cub, 154 Cub, 185 Loboy
- B - CASE/INTERNATIONAL HARVESTER #614421R91  
FITS: 424, 2424, 444, 244
- C - INTERNATIONAL HARVESTER #A31102  
FITS: Case D & S Series

- D - MF 505 472M91  
FITS: 135 Perkins Gas, 135 Continental after SN641014694, 150 Continental, 165 Gas, 175 Gas, 180 Gas, MF20 Perkins Gas, MF30 Perkins Gas, 2135 Utility after SN646001190, 3165 Continental  
- JOHN DEERE #S-AM3100T  
FITS: A, B  
- CASE/INTERNATIONAL HARVESTER #1370832R91  
FITS: H, M, MD, 460, 560, 660, 656
- E - FORD #NAA9155B & #2N9155B  
FITS: 9N, 2N, 8N, NAA-Jubilee

### Replacement Parts

SKU NUMBER	UPC ITEM NO. 0-80235-	ITEM	TYPE	CLAM. NO.* UPC ITEM NO. 0-80235-	WEIGHT (lbs.)
S04100	04100 9	Brass screen	Shallow	-	0.05
S04101	04101 6	Bail nut	Shallow	-	0.05
S04102	04102 3	Glass bowl	Shallow	S34102 (1) 34102 4	0.05
S04103	04103 0	Gasket	Shallow	-	0.05
S04104	04104 7	Bail assembly	Shallow	S34101 (1) 34101 7	0.05
S04105	04105 4	Nylon filter	Large	-	0.05
S04106	04106 1	Bail nut	Large	-	0.05
S04107	04107 8	Glass bowl	Large	S34107 (1) 34107 9	0.05
S04108	04108 5	Gasket	Large	-	0.05
S04109	04109 2	Bail assembly	Large	S34104 (1) 34104 8	0.05
S34100	34100 0	Screen & gasket	Shallow	-	0.05
S34105	34105 5	Filter & gasket	Large	-	0.05

\* Number in parenthesis indicates clamshell quantity





# GATE & FENCE

## Hinge Straps

For use with 3/8" carriage bolt



SKU NUMBER	UPC ITEM NO. 0-87196-	SIZE	HINGE HOLE DIAM.	WEIGHT (lbs.)
S16106000	16197 5	6"	1/2"	0.6
S16106100	16161 6	8"	1/2"	0.7
S16106200	16162 3	10"	5/8"	1.1
S16106300	16163 0	12"	5/8"	1.2
S16106400	16164 7	14"	3/4"	2.0
S16106500	16165 4	16"	3/4"	2.3

## Hinge Clamps



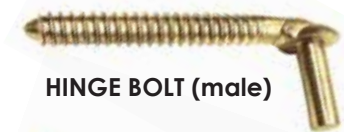
SKU NUMBER	UPC ITEM NO. 0-87196-	SIZE	HINGE HOLE DIAM.	WEIGHT (lbs.)
S16106600	16166 1	3/4" x 1-3/4"	3/4"	0.9
S16106700	16167 8	3/4" x 2"	3/4"	0.9
S16106800	16168 5	5/8" x 1-3/4"	5/8"	0.9
S16106900	16169 2	5/8" x 2"	5/8"	0.9

## Bolt Hooks



SKU NUMBER	UPC ITEM NO. 0-87196-	SIZE	STRAP SIZE	WEIGHT (lbs.)
S16107000	16170 8	1/2" x 6"	6" & 8"	0.6
S16107100	16171 5	5/8" x 8"	10" & 12"	1.1
S16107200	16172 2	5/8" x 12"	10" & 12"	1.4
S16107300	16173 9	3/4" x 10"	14" & 16"	1.7
S16107400	16194 4	3/4" x 12"	14" & 16"	1.9

## Hinge Bolts



HINGE BOLT (male)



HINGE BOLT (female)

SKU NUMBER	UPC ITEM NO. 0-87196-	SIZE	STRAP SIZE	WEIGHT (lbs.)
S16107500	16175 3	1/2" x 4"	6" & 8"	0.3
S16107600	16176 0	5/8" x 5"	10" & 12"	0.6
S16107700	16177 7	3/4" x 6"	14" & 16"	0.8
<b>WITH EYE HINGE</b>				
S16107800	16178 4	1/2" x 4"	5" & 8"	0.5
S16107900	16179 1	5/8" x 5"	10" & 12"	0.9

www.speeco.com • Toll Free: 800-525-8322 • FAX: 303-278-3432

# GATE & FENCE



## Gate Latches



SKU NUMBER	UPC ITEM NO. 0-87196-	DESCRIPTION	WEIGHT (lbs.)
S16100300	16103 6	Two-way gate latch; round tube gates 1-5/8" to 2" outside diameter; painted blue	5.0
S16100700	16107 4	Two-way lockable gate latch; designed to accept padlock; round tube gates 1-1/4" to 1-1/2" outside diameter; painted black	5.0
S16100100	16101 2	Two-way lockable gate latch; designed to accept padlock; round tube gates 1-5/8" to 2" outside diameter; painted blue	5.0
S16100500	16105 0	One-way lockable gate latch; designed to accept padlock; round tube gates 1-5/8" to 2" outside diameter; painted red	3.2

## Gate Anchor



SKU NUMBER	UPC ITEM NO. 0-87196-	DESCRIPTION	WEIGHT (lbs.)
S16100200	16102 9	Gate anchor; holds livestock gate open in any position; helps prevent gate end from swinging and sagging; round tube gates 1-3/4" to 2" outside diameter; painted red	4.0

Solutions for country living®





# GATE & FENCE

## Gate Wheels



SKU NUMBER	UPC ITEM NO. 0-87196-	DESCRIPTION	WEIGHT (lbs.)
S16100600	16106 7	Gate wheel; allows gate to open and close with ease; prevents gate sag; round tube gates 1-5/8" to 2" outside diameter; painted blue	4.1
S16117400	16174 6	Spring gate wheel; adjusts for gates with high ground clearance; prevents gate sag and drag; reduces stress on hinges, bolt hooks and post by supporting swing end of gate; allows gate to open and close easily in either direction; fits gates 1-5/8" to 2" O.D. tube; easy to install; hardware included	12
S16117000	16170 8	Tall gate wheel; adjusts for gates with high ground clearance; prevents gate sag and drag; reduces stress on hinges, bolt hooks and posts by supporting swing end of gate; allows gate to open and close easily in either direction; fits gates with 1-5/8" to 2" O.D. tube; easy to install; hardware included	8

## Gate Hinges



SKU NUMBER	UPC ITEM NO. 0-87196-	DESCRIPTION	WEIGHT (lbs.)
S16100800	16108 1	Gate hinge; designed for round tube gates with 1-5/8" to 1-3/4" outside diameter; 5/8" diameter x 6" long bolts; kit includes upper and lower hinges and mounting hardware	2.6
S16100900	16109 8	Gate hinge; designed for round tube gates with 2" outside diameter; 3/4" diameter x 12" long bolts; kit includes upper and lower hinges and mounting hardware	5.9

# GATE & FENCE



## Gate Closers



SKU NUMBER	UPC ITEM NO. 0-87196-	DESCRIPTION	WEIGHT (lbs.)
S16101800	16188 3	Adjustable gate closer; heavy duty cable will adjust to fit most posts; designed to accept a padlock; powder coated corrosion resistant finish; comes in a four color display box	5.0
S16101900	16189 0	Gate closer; fits gate posts up to 5" diameter; accepts padlocks; powder coated corrosion resistant finish; comes in a four color display box	5.0



## Barbed Wire Carrier



SKU NUMBER	UPC ITEM NO. 0-87196-	DESCRIPTION	WEIGHT (lbs.)
S16110300	16198 2	Efficient and safe way to carry barbed wire; easily unroll barbed wire by yourself; free spinning design	0.5

## Wire Gripper



SKU NUMBER	UPC ITEM NO. 0-87196-	DESCRIPTION	WEIGHT (lbs.)
S16111000	16110 4	Wire gripper; holds wire in place for fencing maintenance; works with barbed wire, smooth wire and small cable	0.9



# GATE & FENCE

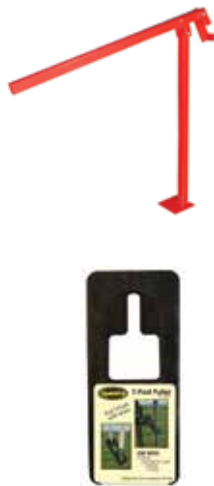
## Post Pounders

Drive steel posts into the ground quickly and efficiently. Easy to grip handles, heavy duty steel construction, powder coat finish.



SKU NUMBER	UPC ITEM NO. 0-87196-	DESCRIPTION	WEIGHT (lbs.)
S16110100	16111 1	Standard duty post pounder; 23-1/4" long	17
S16110200	16112 8	Spring post pounder; spring inside unit pushes it upwards after impact; reduces the effort involved in driving steel posts	17
S16110900	16109 8	Standard duty post pounder; 29-1/2" long	12
S16117200	16149 4	Heavy duty post pounder; drive steel posts into the ground quickly and efficiently; easy to grip handles; heavy duty steel construction	30

## Post Pullers



SKU NUMBER	UPC ITEM NO. 0-87196-	DESCRIPTION	WEIGHT (lbs.)
S16116000	16160 9	T-post puller; for removal of studded "T" posts; easy one man operation pulls the post straight out of the ground without bending or twisting so it can be reused	17
S16110400	16104 3	Metal T-post puller; innovative slot allows use of different gauges of chain; use with tractor bucket, chain, handyman jack or s-hook; simple and quick to use	2.29

# GATE & FENCE



## Wire Stretchers



SKU NUMBER	UPC ITEM NO. 0-87196-	DESCRIPTION	WEIGHT (lbs.)
S16111500	16115 9	Standard duty wire stretcher; comes in a four color display box	8.3
S16111800	16118 0	Replacement spring kit for S16111500 above	0.2
S16112000	16120 3	Wire stretcher with ratchet control; for release of wire tension; comes in a four color display box.	8.6
S16112100	16121 0	Replacement spring kit for S16112000 above	0.2
S16112500	16125 8	Rope wire stretcher; comes in a four color display box	5
S16111300	16113 5	Woven wire stretcher with hooks	14



# SPROCKETS

SpeeCo offers a complete line of high quality, precision made hubs, sprockets and pulleys. These weld-on components are designed for a variety of farm, ranch and industrial applications.

## Sprockets for #40 Chain - 1/2" Pitch



SKU NUMBER BULK	UPC ITEM NUMBER BULK 0-87196-	NUMBER OF TEETH	OUTSIDE DIAMETER	USE HUB SERIES	WEIGHT (lbs.)
S80401200	80412 4	12	2-3/16"	V	0.13
S80401300	80413 1	13	2-1/4"	V	0.13
S80401400	80414 8	14	2-7/16"	V	0.19
S80401500	80415 5	15	2-5/8"	V	0.25
S80401600	80416 2	16	2-13/16"	W	0.19
S80401700	80417 9	17	3"	W	0.25
S80401800	80418 6	18	3-1/8"	W	0.32
S80401900	80419 3	19	3-5/16"	W	0.32
S80402000	80420 9	20	3-7/16"	X	0.32
S80402100	80421 6	21	3-5/8"	X	0.38
S80402200	80422 3	22	3-3/4"	X	0.44
S80402300	80423 0	23	4"	X	0.50
S80402400	80424 7	24	4-1/8"	X	0.56
S80402600	80426 1	26	4-3/8"	X	0.69
S80402800	80428 5	28	4-11/16"	X	0.88
S80403000	80430 8	30	5-1/16"	X	1.00
S80403200	80432 2	32	5-3/8"	X	1.13
S80403600	80436 0	36	6"	X	1.50
S80404000	80440 7	40	6-5/8"	X	2.00
S80404200	80442 1	42	7"	X	2.20
S80404500	80445 2	45	7-3/8"	X	2.56
S80404800	80448 3	48	7-7/8"	X	3.05
S80406000	80460 5	60	9-3/16"	X	5.10

# SPROCKETS



## Sprockets for #50 Chain - 5/8" Pitch



SKU NUMBER BULK	UPC ITEM NUMBER BULK 0-87196-	NUMBER OF TEETH	OUTSIDE DIAMETER	USE HUB SERIES	WEIGHT (lbs.)
S80501000	80510 7	10	2-1/4"	V	0.19
S80501100	80511 4	11	2-1/2"	V	0.19
S80501200	80512 1	12	2-3/4"	W	0.22
S80501300	80513 8	13	2-7/8"	W	0.25
S80501400	80514 5	14	3-1/16"	W	0.32
S80501500	80515 2	15	3-1/4"	W	0.44
S80501600	80516 9	16	3-7/16"	W	0.50
S80501700	80517 6	17	3-11/16"	X	0.50
S80501800	80518 3	18	3-7/8"	X	0.58
S80501900	80519 0	19	4-1/8"	X	0.69
S80502000	80520 6	20	4-3/8"	X	0.75
S80502100	80521 3	21	4-9/16"	X	0.88
S80502200	80522 0	22	4-3/4"	X	1.00
S80502400	80524 4	24	5-1/8"	X	1.25
S80502600	80526 8	26	5-1/2"	X	1.63
S80502800	80528 2	28	5-7/8"	X	1.83
S80503000	80530 5	30	6-5/16"	X	2.19
S80503200	80532 9	32	6-3/4"	X	2.38
S80503400	80534 3	34	7-1/16"	X	3.10
S80503600	80536 7	36	7-9/16"	X	3.25
S80504000	80540 4	40	8-5/16"	X	3.95
S80504200	80542 8	42	8-11/16"	X	4.50
S80505000	80550 3	50	10-1/4"	X	6.60
S80506000	80560 2	60	12-5/16"	X	9.80
S80509600	80596 1	96	19-7/16"	X	25.00





# SPROCKETS

## Sprockets for #60 Chain - 3/4" Pitch



SKU NUMBER BULK	UPC ITEM NUMBER BULK 0-87196-	NUMBER OF TEETH	OUTSIDE DIAMETER	USE HUB SERIES	WEIGHT (lbs.)
S80600900	80609 8	9	2-1/2"	V	0.32
S80601000	80610 4	10	2-3/4"	V	0.38
S80601100	80611 1	11	3"	W	0.38
S80601200	80612 8	12	3-1/4"	W	0.44
S80601300	80613 5	13	3-1/2"	W	0.63
S80601400	80614 2	14	3-3/4"	W	0.75
S80601500	80615 9	15	4"	X	0.75
S80601600	80616 6	16	4-1/4"	X	0.94
S80601700	80617 3	17	4-1/2"	X	1.19
S80601800	80618 0	18	4-11/16"	X	1.32
S80601900	80619 7	19	5"	X	1.50
S80602000	80620 3	20	5-1/8"	X	1.63
S80602100	80621 0	21	5-1/2"	X	2.00
S80602200	80622 7	22	5-11/16"	X	2.25
S80602400	80624 1	24	6-1/8"	X	2.75
S80602600	80626 5	26	6-5/8"	X	3.25
S80602800	80628 9	28	7-1/8"	X	3.75
S80603000	80630 2	30	7-5/8"	X	4.50
S80603200	80632 6	32	8"	X	5.15
S80603600	80636 4	36	9"	X	6.50
S80604000	80640 1	40	9-15/16"	X	8.28
S80604200	80642 5	42	10-1/2"	X	9.15
S80605400	80654 8	54	13-1/4"	X	15.60

# SPROCKETS



## Idler Sprockets



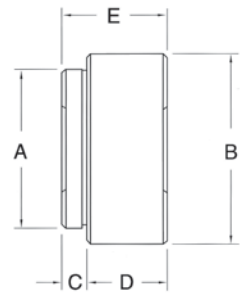
SKU NUMBER BULK	SKU NUMBER CLAM.	UPC ITEM NUMBER 0-87196-		CHAIN SIZE	NUMBER OF TEETH	BORE SIZE	WEIGHT (lbs.)
		BULK	CLAM.				
S80441700	S804417YAU (1)	80901 3	90301 8	40 or 41	17	1/2"	0.44
S80451700	-	80902 0	--	40 or 41	17	5/8"	0.44
S80541300	-	80903 7	--	50	13	1/2"	0.38
S80551300	-	80904 4	--	50	13	5/8"	0.38
S80541500	S805415YAU (1)	80905 1	90305 6	50	15	1/2"	0.56
S80551500	S805515YAU (1)	80906 8	90306 3	50	15	5/8"	0.5
S80541700	-	80907 5	--	50	17	1/2"	0.69
S80551700	-	80908 2	--	50	17	5/8"	0.63
S80641100	-	80909 9	--	60	11	1/2"	0.5
S80651100	-	80910 5	--	60	11	5/8"	0.5
S80641300	-	80913 6	--	60	13	1/2"	0.69
S80651300	S806513YAU (1)	80911 2	90312 4	60	13	5/8"	0.69
S80641500	-	80912 9	--	60	15	1/2"	0.94
S80651500	-	80914 3	--	60	15	5/8"	0.88



# HUBS

## Weld-on Hubs

High quality, precision-machined V, W, and X series weld-on hubs. Available in round, spline, and hexagon bores.



	A	B	C	D	E
<b>V-SERIES HUBS</b> To Fit V Type Sprockets	1-1/8"	1-7/16"	7/16"	3/4"	1-3/16"
<b>W-SERIES HUBS</b> To Fit W Type Sprockets	1-5/8"	1-13/16"	7/16"	1"	1-7/16"
<b>X-SERIES HUBS</b> To Fit X Type Sprockets	2"	2-1/2"	7/16"	1"	1-7/16"

### V-Series Hubs

Round Bore with Keyway and Set Screw

SKU NUMBER	UPC ITEM NO. 0-87196-	BORE SIZE	WEIGHT (lbs.)
S80010300	80103 1	1/2"	0.38
S80010500	80105 5	5/8"	0.38
S80010700	80107 9	3/4"	0.32
S80010900	80109 3	7/8"	0.25



### W Series Hubs

Round Bore with Keyway and Set Screw

SKU NUMBER	UPC ITEM NO. 0-87196-	BORE SIZE	WEIGHT (lbs.)
S80020300	80203 8	1/2"	0.88
S80020400	80204 5	9/16"	0.88
S80020500	80205 2	5/8"	0.83
S80020600	80206 9	11/16"	0.83
S80020700	80207 6	3/4"	0.83
S80020800	80208 3	13/16"	0.75
S80020900	80209 0	7/8"	0.75
S80021000	80210 6	15/16"	0.69
S80021100	80211 3	1"	0.63
S80021200	80212 0	1-1/16"	0.63
S80021300	80213 7	1-1/8"	0.57
S80021400	80214 4	1-3/16"	0.50
S80021500	80215 1	1-1/4"	0.40

### W Series Hubs

Hexagon and Spline Bores

SKU NUMBER	UPC ITEM NO. 0-87196-	BORE SIZE	WEIGHT (lbs.)
<b>HEXAGON BORE WITH SET SCREW</b>			
S80023000	80230 4	7/8"	0.70
S80023100	80231 1	1"	0.52
<b>SPLINE BORE WITH SET SCREW</b>			
S80023500	80235 9	1-1/8" x 6	0.63
S80023700	80237 3	1-3/8" x 6	0.44

# HUBS



## Weld-on Hubs

### X-Series Hubs

Hexagon and Spline Bores

SKU NUMBER	UPC ITEM NO. 0-87196-	BORE SIZE	WEIGHT (lbs.)
<b>HEXAGON BORE WITH SET SCREW</b>			
S80032700	80327 1	7/8"	1.50
S80032800	80328 8	1"	1.30
S80032900	80329 5	1-1/8"	1.30
<b>SPLINE BORE WITH SET SCREW</b>			
S80033500	80335 6	1-1/8" x 6	1.38
S80033700	80337 0	1-3/8" x 6	1.20

\* Number in parenthesis indicates clamshell quantity

### X-Series Hubs

Round Bore with Keyway and Set Screw

SKU NUMBER	UPC ITEM NO. 0-87196-	BORE SIZE	WEIGHT (lbs.)
S80030500	80305 9	5/8"	1.65
S80030600	80306 6	11/16"	1.65
S80030700	80307 3	3/4"	1.60
S80030800	80308 0	13/16"	1.60
S80030900	80309 7	7/8"	1.52
S80031000	80310 3	15/16"	1.38
S80031100	80311 0	1"	1.38
S80031200	80312 7	1-1/16"	1.38
S80031300	80313 4	1-1/8"	1.38
S80031400	80314 1	1-3/16"	1.25
S80031500	80315 8	1-1/4"	1.25
S80031600	80316 5	1-5/16"	1.19
S80031700	80317 2	1-3/8"	1.13
S80031800	80318 9	1-7/16"	1.13
S80031900	80319 6	1-1/2"	1.06

\* Number in parenthesis indicates clamshell quantity

## Idler Hubs

### Idler Hubs

SKU NUMBER	UPC ITEM NO. 0-87196-	HUB SERIES	BORE SIZE	WEIGHT (lbs.)
S80025000	80250 2	W	5/8" & 1/2"	0.30
S80035000	80350 9	X	5/8" & 1/2"	0.40





# PULLEYS

## Pulleys for A & B Belts

SKU NUMBER BULK	UPC ITEM NUMBER BULK 0-87196-	OUTSIDE DIAMETER	FITS HUB SERIES	FITS V-BELT STYLE	WEIGHT (lbs.)
S85010100	85101 2	2-1/2"	V	A or B	0.25
S85010200	85102 9	3"	V	A or B	0.25
S85010300	85103 6	3-1/2"	W	A or B	0.50
S85010400	85104 3	4"	W	A or B	0.37
S85010500	85105 0	4-1/2"	W	A or B	0.52
S85010600	85106 7	5"	W	A or B	0.70
S85010700	85107 4	5-1/2"	W	A or B	0.96
S85010800	85108 1	6"	W	A or B	1.06
S85010900	85109 8	6-1/2"	W	A or B	1.10
S85011000	85110 4	7"	W	A or B	1.22
S85011100	85111 1	8"	W	A or B	1.55
S85011200	85112 8	9"	W	A or B	2.00
S85011300	85113 5	10"	W	A or B	2.60
S85011400	85114 2	11"	W	A or B	2.60
S85011500	85115 9	12"	W	A or B	3.42
S85011600	85116 6	14"	W	A or B	4.65
S85011700	85117 3	16"	W	A or B	5.90



## Pulleys for C Belts



SKU NUMBER	UPC ITEM NO. 0-87196-	OUTSIDE DIAMETER	FITS HUB SERIES	FITS V-BELT STYLE	WEIGHT (lbs.)
S85020600	85206 4	6"	X	C	1.92
S85020800	85208 8	8"	X	C	3.28
S85021000	85210 1	10"	X	C	5.20
S85021200	85212 5	12"	X	C	7.52

# PULLEYS



## Flat Type Idler Pulleys

SKU NUMBER	UPC ITEM NO. 0-87196-	OUTSIDE DIAMETER	BORE SIZE	FLAT BORE WIDTH	WEIGHT (lbs.)
S85030300	85303 0	1-7/8"	3/8"	3/4"	0.25
S85030400	85304 7	2-1/4"	3/8"	1"	0.40
S85030500	85305 4	2-3/4"	5/8"	7/8"	0.55
S85030600	85306 1	3-1/4"	5/8"	3/4"	0.65
S85030700	85307 8	3-1/2"	5/8"	1"	0.70
S85030800	85308 5	4"	5/8"	3/4"	0.83
S85030100	85301 6	4"	1/2"	1"	0.85
S85030200	85302 3	4"	5/8"	1"	0.80



## V-Type Idler Pulleys

SKU NUMBER	UPC ITEM NO. 0-87196-	OUTSIDE DIAMETER	BORE SIZE	GROOVE WIDTH	BELT SIZES	WEIGHT (lbs.)
S85032000	85320 7	2-5/8"	3/8"	1/2"	4L, 3L, 3V	0.25
S85032200	85322 1	3"	5/8"	5/8"	5L, 4L, 5V	0.40
S85032300	85323 8	3-1/2"	5/8"	5/8"	5L, 4L	0.60
S85032500	85325 2	4"	5/8"	5/8"	5L, 4L	0.75
S85032600	85326 9	4-1/2"	5/8"	5/8"	5L, 4L	0.85
S85032700	85327 6	5"	5/8"	5/8"	5L, 4L	1.10



## Bushings and Plugs for Idler Pulleys



SKU NUMBER	UPC ITEM NO. 0-87196-	INNER DIAMETER	SHOULDER LENGTH	OVERALL LENGTH	OUTER DIAMETER	WEIGHT (lbs.)
S08101000	81010 1	3/8"	0.0	0.4	5/8"	0.03
S08101100	81011 8	3/8"	0.4	0.8	5/8"	0.06
S08101200	81012 5	1/2"	0.0	0.4	5/8"	0.02
S08101300	81013 2	1/2"	0.4	0.8	5/8"	0.05





# ROLLER CHAIN

## Roller Chain & Roller Chain Breakers

SpeeCo ensures high quality by manufacturing roller chain to meet or exceed ANSI specified standards. The chains are pre-stretched to eliminate initial stretch. Solid rollers maximize the product life cycle. Welded bushings assure the quality. Metal fatigue is avoided by shot-peening the parts before assembly.

SKU NUMBER	UPC ITEM NO. 0-80235-	CHAIN NUMBER	UNIT (ft.)	PITCH (in.)	WEIGHT (lbs.)
S06351	06351 3	35	10	3/8"	2.45
S06355	06355 1	35	50	3/8"	13.30
S06352	06352 0	35-2	10	3/8"	4.65
S06411	06411 4	41	10	1/2"	2.95
S06415	06415 2	41	50	1/2"	15.25
S06401	06401 5	40	10	1/2"	4.35
S06405	06405 3	40	50	1/2"	21.70
S06501	06501 2	50	10	5/8"	6.95
S06505	06505 3	50	50	5/8"	35.10
S06502	06502 9	50-2	10	5/8"	13.65
S06503	06503 2	50-H	10	5/8"	7.80
S06601	06601 9	60	10	3/4"	10.35
S06605	06605 7	60	50	3/4"	52.20
S06602	06602 6	60-2	10	3/4"	20.45
S06603	06603 3	60-H	10	3/4"	12.55
S06801	06801 3	80	10	1"	17.30
S06805	06805 1	80	50	1"	89.20
S06802	06802 0	80-2	10	1"	36.15
S06803	06803 7	80-H	10	1"	20.60
S06100	06100 7	100	10	1-1/4"	27.20
S06120	06120 5	120	10	1-1/2"	38.30
S06241	06241 7	A2040	10	1"	3.11
S06245	06245 5	A2040	50	1"	15.55
S06251	06251 6	A2050	10	1-1/4"	7.25
S06255	06255 4	A2050	50	1-1/4"	25.60
S06261	06261 5	A2060	10	1-1/2"	7.25



### Roller Chain Breakers

Tips are made from tool steel. Breakers are black oxide and zinc plated.

SKU NUMBER	UPC ITEM NO. 0-80235-	DESCRIPTION	FITS	WEIGHT (lbs.)
S05050	05050 6	Roller chain breaker	#25 to #60 Chain	0.8
S05051	05051 3	Roller chain breaker	#60 to #100 Chain	1.5
S05053	05053 7	Replacement tip assembly	S05050 breaker	0.1
S05054	05054 4	Replacement tip assembly	S05051 breaker	0.1



# ROLLER CHAIN



## Connecting Links

SKU NUMBER	UPC ITEM NO. 0-80235-	CHAIN NUMBER	BAGGED QTY.	PITCH	WEIGHT (lbs.)
S66351	66351 5	35	4	3/8"	0.1
S66352	66352 2	35-2	4	3/8"	0.1
S66411	66411 6	41	4	1/2"	0.1
S66401	66401 7	40	4	1/2"	0.1
S66501	66501 4	50	4	5/8"	0.2
S66502	66502 1	50-2	4	5/8"	0.3
S66503	66503 4	50-H	4	5/8"	0.2
S66601	66601 1	60	3	3/4"	0.2
S66602	66602 8	60-2	3	3/4"	0.4
S66603	66603 5	60-H	3	3/4"	0.3
S66801	66801 5	80	2	1"	0.4
S66802	66802 2	80-2	2	1"	0.3
S66803	66803 9	80-H	2	1"	0.4
S66100	66100 9	100	2	1-1/4"	0.5
S66120	66120 7	120	2	1-1/2"	0.9
S62040	62040 2	A2040	4	1"	0.1
S62050	62050 1	A2050	3	1-1/4"	0.2
S62060	62060 0	A2060	3	1-1/4"	0.3



Packaged in carded bags.

## Offset Links



Packaged in carded bags.

SKU NUMBER	UPC ITEM NO. 0-80235-	CHAIN NUMBER	BAGGED QTY.	PITCH	WEIGHT (lbs.)
S76351	76351 2	35	4	3/8"	0.1
S76352	76352 9	35-2	4	3/8"	0.1
S76411	76411 3	41	4	1/2"	0.1
S76401	76401 4	40	4	1/2"	0.1
S76501	76501 1	50	4	5/8"	0.2
S76503	76503 5	50-2	4	5/8"	0.3
S76502	76502 4	50-H	4	5/8"	0.3
S76601	76601 8	60	3	3/4"	0.3
S76602	76602 5	60-2	3	3/4"	0.4
S76603	76603 2	60-H	3	3/4"	0.4
S76801	76801 2	80	2	1"	0.4
S76802	76802 9	80-2	2	1"	0.7
S76803	76803 6	80-H	2	1"	0.4
S76100	76100 6	100	2	1-1/4"	0.6
S76120	76120 4	120	2	1-1/2"	1
S72040	72040 9	A2040	4	1"	0.2
S72050	72050 8	A2050	3	1-1/4"	0.1
S72060	72060 7	A2060	3	1-1/2"	0.3



# TRAILER JACKS

## Trailer Jacks

SpeeCo's jack line includes the most popular styles and sizes with lift capacities from 1,000 – 10,000 lbs. Precision-engineered with smooth turning handle, dependable inner screw and rugged foot plate. Available in several topwind and sidewind styles with lift heights of 10", 12.5" & 15".

Wheeled  
Flange (Weld)  
Mount,  
Sidewind



### 1,000 lb. Jack

SKU NUMBER	UPC ITEM NO. 0-87196-	DESCRIPTION	LIFT HEIGHT	STATIC CAPACITY (lbs.)	LIFT CAPACITY (lbs.)	WEIGHT (lbs.)
S10041500	10415 6	Wheeled flange (weld) mount, sidewind	10"	1,000	1,000	15.0



Flange (Weld)  
Mount,  
Topwind



Flange (Weld)  
Mount,  
Sidewind



Tubular  
Mount,  
Topwind



Tubular  
Mount,  
Sidewind



A-Frame,  
Topwind

### 2,000 lb. Jacks

SKU NUMBER	UPC ITEM NO. 0-87196- BULK	DESCRIPTION	LIFT HEIGHT	STATIC CAPACITY (lbs.)	LIFT CAPACITY (lbs.)	WEIGHT (lbs.)
S10015000	10150 6	A-frame, topwind	15"	3,000	2,000	12.9
S10030100	10301 2	Flange (weld) mount, topwind	10"	3,000	2,000	14.5
S10030200	10302 9	Tubular mount, topwind	10"	3,000	2,000	14.1
S10030300	10303 6	Flange (weld) mount, topwind	15"	3,000	2,000	18.8
S10030400	10304 3	Tubular mount, topwind	15"	3,000	2,000	19.1
S10040100	10401 9	Flange (weld) mount, sidewind	10"	3,000	2,000	17.0
S10040200	10402 6	Tubular mount, sidewind	10"	3,000	2,000	14.0



# TRAILER JACKS

## Trailer Jacks



Flange (Weld)  
Mount,  
Topwind



Flange (Weld)  
Mount,  
Sidewind



Tubular  
Mount,  
Topwind



Tubular  
Mount,  
Sidewind



A-Frame,  
Topwind



Square,  
Direct Weld,  
Sidewind

### 5,000 lb. Jacks

SKU NUMBER	UPC ITEM NO. 0-87196- BULK	DESCRIPTION	LIFT HEIGHT	STATIC CAPACITY (lbs.)	LIFT CAPACITY (lbs.)	WEIGHT (lbs.)
S100101N0	10190 2	Flange (weld) mount, topwind	10"	7,000	5,000	16.4
S100102N0	10191 9	Tubular mount, topwind	10"	7,000	5,000	15.3
S100103N0	10192 6	Flange (weld) mount, topwind	15"	7,000	5,000	20.9
S100104N0	10193 3	Tubular mount, topwind	15"	7,000	5,000	19.8
S10015100	10151 3	A-frame, topwind	15"	7,000	5,000	13.7
S100201N0	10294 0	Flange (weld) mount, sidewind	10"	7,000	5,000	12.6
S100202N0	10295 4	Tubular mount, sidewind	10"	7,000	5,000	16.9
S100203N0	10296 1	Flange (weld) mount, sidewind	15"	7,000	5,000	20.4
S100204N0	10297 1	Tubular mount, sidewind	15"	7,000	5,000	19.8
S10022500	10225 1	Square direct weld, sidewind	15"	8,000	5,000	26.0

Square,  
Direct Weld,  
Sidewind



### 10,000 lb. Jack

SKU NUMBER	UPC ITEM NO. 0-87196- BULK	DESCRIPTION	LIFT HEIGHT	STATIC CAPACITY (lbs.)	LIFT CAPACITY (lbs.)	WEIGHT (lbs.)
S10022600	10226 8	Square direct weld, sidewind	12.5"	12,000	10,000	57.0



# TRAILER JACKS

## Trailer Jack Replacement Parts

SpeeCo offers common replacement parts for trailer jacks. Packaged in clamshells.

SKU NUMBER	UPC ITEM NO. 0-87196-	DESCRIPTION	FITS TRAILER JACKS
S10110100	11101 7	Sidewind handle assembly	2,000 lb. sidewind jacks
S10110200	11102 4	Sidewind handle assembly	5,000 lb. sidewind jacks
S10110300	11103 1	Topwind handle assembly	All 2,000 lb. and 5,000 lb. topwind jacks
S10110400	11104 8	Topwind knob	All topwind jacks
S10110500	11105 5	Sidewind knob	All sidewind jacks
S10110600	11106 2	Removable foot, base repair kit	All jacks
S10110700	11107 9	Wheel with nut and bolt	Replacement wheel for S10112200 (below)
S10110800	11108 6	Complete caster assembly	Retrofitable to all jacks to 5,000 lbs.
S10110900	11109 3	Flange mount L-bracket	All flange mount jacks to 5,000 lbs.
S10111000	11110 9	Thrust bearing	All 2,000 lb. jacks
S10111100	11111 6	Large bearing	All 5,000 lb. jacks
S10111200	11112 3	Circlip retaining ring	All flange mount jacks to 5,000 lbs.
S10111300	11113 0	Weld-on tube mount 9/16"	Tube mount jacks with 9/16" tube mount
S10111400	11114 7	Weld-on tube mount 5/8"	Tube mount jacks with 5/8" tube mount
S10111600	11116 1	Detent pin	Tube mount jacks with 5/8" tube mount hole
S10111900	11119 2	Sidewind gear kit	2,000 lb. sidewind jacks
S10112000	11120 8	Sidewind gear kit	5,000 lb. sidewind jacks
S10112200	11122 2	Complete caster assembly	Retrofitable to all jacks to 5,000 lbs.



S10111200



S10110200



S10110600



S10112200



S10110300

# RATCHET JACKS



## Ratchet Jacks

Ratchet and implement jacks have multiple uses including the adjustment of implements and equipment. Replace hydraulic cylinders or old screw jacks in those applications where infrequent adjustment is needed.



Turnbuckle Implement Jack



Ratchet Jack



S07091000 Hydraulic Cylinder Clip Pin

SKU NUMBER	UPC ITEM NO. 0-87196-	DESCRIPTION	COLOR	WEIGHT (lbs.)
S01054100	01541 4	Heavy duty ratchet jack with 1-1/4" ACME threads and grease zerks; adjustable from 20" closed to 28" open; 1" clevis pins, clip pins and handle included	Black	15
S010541GT	01544 5	Heavy duty ratchet jack with 1-1/4" ACME threads and grease zerks; adjustable from 20" closed to 28" open; 1" clevis pins, clip pins and handle included	Primer	15
S01050300	01503 2	Turnbuckle implement jack with 1-1/4" NC threads; adjustable from 20" closed to 28" open; 1" pin holes	Red	11
S01054800	01548	Handle for SpeeCo ratchet jacks	Plated	0.75
S07091000	07910 2	Clip pin for 1" diameter hydraulic cylinder pins; also available packed four per blister box SKU number S070910YDU	Plated	0.10





# COUNTER TOP ASSORTMENTS

Our most popular linkage pins and hitch pins are available in wire rack display assortments complete with vinyl header signs. These racks are suitable for countertop, pegboard or shelf displays. Many of our smaller, high volume items are available in custom carton assortments that feature the most popular sizes. Maximize your countertop sales with these proven merchandisers.

## Hitch Pin Assortments



S28032200



S28031400

### Blue Head

SKU NUMBER	UPC ITEM NO. 0-87196-	DESCRIPTION	WEIGHT (lbs.)
S28034900	283493	Grade 8 blue head hitch pin assortment on wire rack with header sign; contains 6- S70082200, 8- S70083100, 8- S70083200, 4- S70084200, 3- S70085200	50

### Grey Head

SKU NUMBER	UPC ITEM NO. 0-80235-	DESCRIPTION	WEIGHT (lbs.)
S03052	03052 8	Grade 8 grey head hitch pin assortment on wire rack. Box of 29. Contains 6- S01702, 8- S01703, 8- S01704, 4- S01706, 3- S01708	42

### Premium

SKU NUMBER	UPC ITEM NO. 0-80235-	DESCRIPTION	WEIGHT (lbs.)
S03059	03059 1	Grade 5 premium hitch pin assortment on wire rack. Box of 29. Contains 6- S01602, 8- S01603, 8- S01604, 4- S01606, 3- S01607	34

### Red Head

SKU NUMBER	UPC ITEM NO. 0-87196-	DESCRIPTION	WEIGHT (lbs.)
S28032200	28322 6	Grade 5 red head hitch pin assortment on wire rack with header sign; contains 6- S70052200, 8- S70053100, 8- S70053200, 4- S70054200 and 3- S70055200	50

### Swivel Handle

SKU NUMBER	UPC ITEM NO. 0-87196-	DESCRIPTION	WEIGHT (lbs.)
S28031400	28314 1	Forged swivel handle hitch pin assortment on wire rack with header sign; contains 3- S071021C0, 3- S071022C0, 4- S071031C0, 4- S071032C0, 3- S071041C0, 3- S071042C0, 2- S071051C0 and 2- S071052C0	33
S28031500	28315 8	Forged swivel handle hitch pin assortment on wire rack with header sign; contains 6- S071022C0, 6- S071031C0, 6- S071032C0, 3- S071042C0 and 3- S071052C0	33

# COUNTER TOP ASSORTMENTS



## Clevis Pin Assortment



S28031100

SKU NUMBER	UPC ITEM NO. 0-87196-	DESCRIPTION	WEIGHT (lbs.)
S28031100	28311 0	Universal clevis pin counter top display assortment; contains 40- S07041100, 40- S07041200, 40- S07041300, 40- S07041400, 40- S07041500, 20- S07041600, 20- S07041700 and 20- S07041900	21.5

## Bushing Assortments



S28030400

SKU NUMBER	UPC ITEM NO. 0-87196-	DESCRIPTION	WEIGHT (lbs.)
S080502ZCU	88352 5	Cat. 1-2 bushing assortment in poly bag; contains 2- S08020100 lift arm bushing and 1- S08030100 top link bushing	0.5
S28030400	28304 2	Bushing assortment in counter top display carton with emphasis on Cat. 1-2; contains 10- S08030100, 28- S08020100, 6- S08030300, 6- S08030200 and 4- S08031200 bushings	12.5
S28030300	28303 5	Bushing assortment in counter top display carton with emphasis on Cat. 2-3; contains 8- S08030100, 14- S08020100, 6- S08030300, 10- S08030200 and 10- S08031200 bushings	13.0

## Lynch Pin Assortments



S28030100

SKU NUMBER	UPC ITEM NO. 0-87196-	DESCRIPTION	WEIGHT (lbs.)
S28030100	28301 1	Lynch pin assortment counter top display; contains 15- S07091500, 15- S07091900, 20- S07091300, 30- S07090100, 15- S07090200, 30- S07090400 and 10- S07090800	14
S28029700	28297 7	7/16" lynch pin display carton; contains 150- S07090100	16.3



# COUNTER TOP ASSORTMENTS

## Linkage Pin Assortment



S28031300

SKU NUMBER	UPC ITEM NO. 0-87196-	DESCRIPTION	WEIGHT (lbs.)
S28031300	28313 4	Universal linkage pin assortment on wire rack with header sign; features the most popular Category 1 and 2 top link pins and draw pins; contains 4- S07070100, 4- S07070200, 3- S07071600, 3- S07070400, 4- S07020200, 4- S07020800, 3- S07021900, 3- S07024500, 3- S07020400, 3- S07024000, 4- S07020100 and 3- S07021200	60

## "R" Clip Pin Assortments



S28031000



S07098100



S070980YNU



S070980ZNU

SKU NUMBER	UPC ITEM NO. 0-87196-	DESCRIPTION	WEIGHT (lbs.)
S28031000	28310 3	Hitch pin clip counter top display assortment; contains 50- S07092300, 30- S07092400, 30- S07092500, 20- S07092700, 30- S070929S0, 10- S07092800 and 10- S07090300	11.7
S070980ZNU	88220 7	Hitch pin clip assortment in 5" x 7" poly bag; contains 3- S07092300, 4- S07092400, 4- S07092500 and 3- S07092700	0.4
S070980YNU	98220 4	Hitch pin clip assortment in plastic blister box; contains 3- S07092300, 4- S07092400, 4- S07092500 and 3- S07092700	0.4
S07098100	07981 2	R clip pin assortment box. 103 pieces. Contains 5- S070929S0, 8- S07092700, 20- S07092500, 20- S07092400, 30- S07092300, 20- S07092200	3.1

# COUNTER TOP ASSORTMENTS



## Wheel Spinner Assortments



S28033200

SKU NUMBER	UPC ITEM NO. 0-87196-	DESCRIPTION	WEIGHT (lbs.)
S28032400	28324 0	Aluminum knob, 12-pack display	7.8
S28032700	28327 1	Red vinyl coated knob, 12-pack display	7.8
S28032900	28329 5	Black vinyl coated knob, 12-pack display	7.8
S28033000	28330 1	Blue vinyl coated knob, 12-pack display	7.8
S28033200	28332 5	Mixed color wheel spinner assortment, 12-pack display; contains 3 red, 3 green, 2 blue, 2 yellow, 2 black	7.8

## Lock Pin Assortment



SKU NUMBER	UPC ITEM NO. 0-87196-	DESCRIPTION	WEIGHT (lbs.)
S28039600	28396 7	PTO Lock Pin Display; contains 8- S07093900, 28- S07094000, 8- S07094100, 8- S07095100, 8- S07096400	12

## Double Lok™ Hitch Pin Display Stand

Grade 5 double locking pin for added security and safety when attaching equipment. Powder coated pin and handle. Quick release handle.

SKU NUMBER	UPC ITEM NO. 0-87196-	DESCRIPTION	WEIGHT (lbs.)
S70041500	28639 1	Grade 5 Double Lok hitch pin assortment rack with header sign; contains 1- S70042100, 2- S70043100, 5- S70043200, 2- S70044100, 5- S70044200, 5- S70045200, 2- S70046200, 2- S70047200, 1- S70049200	80



S70041500  
Display stand  
with pins





# HITCHES & RELATED PARTS

## Quick Hitches

For over thirty years SpeeCo has offered this popular device that makes the attachment and release of 3-point implements fast and easy. We offer a wide selection of units including a front mount quick hitch, which gives the option to use Category 1, 3-point implements on the front of a tractor or loader.



Front Mount Quick Hitch  
S14111600



Category 1 Quick Hitch  
S14110100

### Quick Hitches

SKU NUMBER	UPC ITEM NO. 0-87196-	DESCRIPTION	Maximum Recommended Horse Power	WEIGHT (lbs.)
S14116000	14080 2	E-Hitch Category 1 Quick Hitch. Fits most Category 1 tractors and implements. Adjustable top link bracket.	40	66
S14110100	14001 7	Category 1 Quick Hitch. Fits most Category 1 tractors and implements. Adjustable top link bracket. Includes 7/8" mounting pins and adaptor bushings. 27-1/4" width.	50	76
S14111600	14116 8	Front Mount Quick Hitch. Fits most skid steer loaders or tractors with skid steer compatible quick attach system.	N/A	125
S14110200	14002 4	Category 2 Standard Quick Hitch. Fits most Category 2 tractors and implements. Complete with 1-1/8" mounting pins and adaptor bushings. 32" width.	100	134
S14110700	14007 9	Category 2 Heavy Duty Quick Hitch. Fits most Category 2 tractors and implements. Complete with 1-1/8" mounting pins and adaptor bushings. 32" width.	150	160
S14110800	14008 6	Category 2/3 Quick Hitch. Fits Category 2 & 3 tractors with Category 3 equipment. 1-7/16" mounting pins. 38" width.	225	196
S14110600	14006 2	Category 3 Narrow Quick Hitch. Designed to fit tractors with Category 3 narrow equipment. Includes 1-7/16" mounting pins. 32" width.	225	176
S14110300	14003 1	Category 3 Quick Hitch. Designed to fit most Category 3 tractors pulling Category 3 equipment. Comes complete with 1-7/16" mounting pins. 38" width.	225	182



S14114400



S14115700



S14113000

### Quick Hitch Parts & Accesories

SKU NUMBER	UPC ITEM NO. 0-87196-	DESCRIPTION	WEIGHT (lbs.)
S36020200	36202 0	Skid Steer Mount without attachments	50
S14113900	14039 0	7/8" Mounting Pin for S14110100 Category 1 Quick Hitch (2 required per unit)	0.6
S14112400	14024 6	Mounting Pin for S14110100 Category 2 Quick Hitch (2 required per unit)	1.2
S14113000	14030 7	Complete Adaptor Kit with Roll Pins and Bushings for S14110200 and S14110700	2.3
S14114400	14044 4	Complete Adaptor Kit with Roll Pins and Bushings for S14110100	3.1
S14114500	14045 1	Adaptor for S14110100 Category 1 Quick Hitch. Allows this hitch to be used with implements not made to ASABE quick hitch standards. Comes standard with S14110100	5.4
S14115700	14057 4	Adaptor for Non-Compatible Category 1 ASABE Implements. Works with SpeeCo's E-Hitch, Category 1 and Front Mount Hitches.	6
S14041600	14416 9	32" left hand tongue for Category 2 hitch	21.1
S14041700	14417 6	32" right hand tongue for Category 2 hitch	20

# ULTRAFORK & SPREADER



## UltraFork

The UltraFork easily lifts debris and objects around the workplace and home. Three to five tines are perfect for round or square hay bales. Seven tines for unlimited applications such as moving wood, manure, rocks and more.



S33030300



S33030500

SKU NUMBER	UPC ITEM NO. 0-87196-	DESCRIPTION	WEIGHT (lbs.)
S33030300	33303 7	UltraFork. Fits skid steer quick attach systems, 3-point hitch systems, and quick hitches. Comes standard with three tines and two lift arm pins.	150
S33030500	33305 1	Tine; 32" length	13

## Manure Spreader

- Attaches to garden tractor or ATV
- Corrosion-resistant aluminum construction
- Industrial grade locking hubs and chain driven agitator
- 8 cubic foot capacity
- Fits through 47" stall doors
- 2" ball coupler
- Handle for easy movement
- Clevis hitch attachment included
- Steel tongue and handle
- Tension adjustable trap door for even spreading
- Adjustable chain tensioner with chain guard
- Chain driven agitator to keep manure from bridging



S33031000

SKU NUMBER	DESCRIPTION	WEIGHT (lbs.)
S33031000	Manure Spreader	180





# LOG SPLITTERS

SpeeCo has manufactured a wide variety of gas engine and 3-point hitch mounted hydraulic log splitters since 1976 and is a global leader in log splitters. Many innovations in log splitter design and various safety features are the result of SpeeCo engineering and "voice of the customer" feedback. SpeeCo also provides a variety of log splitter accessories.

SpeeCo log splitters unique features include:

- Beam with engineered cylinder connection for increased strength
- Patented log cradle design
- Removable cutting wedge
- Reinforced stripper plates remove wood from wedge



Patented built-in log cradle makes splitting wood quicker, easier & safer

## 5 Ton Electric Log Splitter

- Splits logs up to 20" long
- Automatic push plate return
- Separate pump and valve
- Easy to move with convenient handle and extra large wheels
- Built in log cradle
- No gas or oil required
- Easy one hand operation
- 110 volt
- Copper wound motor
- Hydraulic fluid included
- Integral suction filter to protect pump and valve
- Minimal maintenance required
- Rugged steel construction with a one year warranty
- Optional stand available for comfortable splitting height

Optional log splitter stand available. See accessories section.



S40100500

SKU NUMBER	DESCRIPTION	WEIGHT (lbs.)
S40100500	5 Ton Electric Log Splitter	105

## 15 Ton Log Splitter



S401615BL

- 3.5" x 18" cylinder
- Auto-return valve
- Two-stage 11 GPM pump
- Replaceable spin-on filter
- 4.8" x 8" tires
- Removable ground stand
- 6" high wedge
- 10 second cycle time\*
- 19" log length
- 2.5 gallon hydraulic capacity
- 36" height
- 65" length
- 45.5" width

Optional log catcher available. See accessories section.

SKU NUMBER	DESCRIPTION	WEIGHT (lbs.)
S401615BL	15 Ton Log Splitter 212cc SpeeCo engine	315
S401615UH	15 Ton Log Splitter 190cc Honda GC engine	315

\* Tonnage and cycle times may vary depending upon mechanical and environmental conditions.



# LOG SPLITTERS

## 22 Ton Log Splitters

Standard on all 22 ton log splitters:

- 4" x 24" cylinder
- Auto-return valve
- Two-stage 11 GPM pump
- Replaceable filter
- 4.8" x 8" wheels
- 7" high wedge
- 13 second cycle time\*
- 25.5" log length
- 43" log splitter height
- 50" log splitter width
- Both vertical and horizontal operation

Additional model-specific features included in product descriptions below.



Quickly converts to vertical operating position for heavy logs



S40123300

SKU NUMBER	DESCRIPTION	WEIGHT (lbs.)
S40123300	22 Ton Log Splitter 190cc Briggs and Stratton 675 series vertical engine	537

- Flip-up ground stand
- 5.5 gallon hydraulic capacity
- 84.5" log splitter length



S401622BL

SKU NUMBER	DESCRIPTION	WEIGHT (lbs.)
S401622BL	22 Ton Log Splitter 212cc SpeeCo horizontal engine	430

- Flip-up ground stand with spring lock
- 6.5 gallon hydraulic capacity
- 87" log splitter length



S401622PH

SKU NUMBER	DESCRIPTION	WEIGHT (lbs.)
S401622PH	22 Ton Log Splitter 190cc Honda GC horizontal engine	520

- Flip-up ground stand with spring lock
- 6.5 gallon hydraulic capacity
- 87" log splitter length

## 25 Ton Log Splitters

Standard on all 25 ton log splitters:

- 4.5" x 24" cylinder
- Auto-return valve
- Replaceable filter
- 4.8" x 8" wheels
- 7" high wedge
- 25.5" log length
- 43" log splitter height
- 50" log splitter width
- Both vertical and horizontal operation

Additional model-specific features included in product descriptions below.



Quickly converts to vertical operating position for heavy logs



S401625UB

SKU NUMBER	DESCRIPTION	WEIGHT (lbs.)
S401625UB	25 Ton Log Splitter 305cc Briggs & Stratton 1450 horizontal engine	480

- 16 GPM 2-stage engine
- Flip-up ground stand with spring lock
- 12 second cycle time\*
- 6.5 gallon hydraulic capacity
- 87" log splitter length



S401625PH

SKU NUMBER	DESCRIPTION	WEIGHT (lbs.)
S401625PH	25 Ton Log Splitter 190cc Honda GC horizontal engine	485

- 11 GPM 2-stage engine
- Flip-up ground stand with spring lock
- 17 second cycle time\*
- 6.5 gallon hydraulic capacity
- 87" log splitter length



S401625PHLC

SKU NUMBER	DESCRIPTION	WEIGHT (lbs.)
S401625PHLC	25 Ton Log Splitter with log catcher 190cc Honda GC horizontal engine	497

- 11 GPM 2-stage engine
- Flip-up ground stand with spring lock
- 17 second cycle time\*
- 6.5 gallon hydraulic capacity
- 87" log splitter length
- Log catcher included



\* Tonnage and cycle times may vary depending upon mechanical and environmental conditions.



# LOG SPLITTERS

## 28 Ton Log Splitters

- 4.5" x 24" cylinder
- Auto-return valve
- 16 GPM 2-stage pump
- Replaceable filter
- 4.8" x 8" wheels
- Flip-up ground stand with spring lock
- 7" high wedge
- 12 second cycle time\*
- 6.5 gallon hydraulic capacity
- 25.5" log length
- 45" log splitter height
- 87" log splitter length
- 50" log splitter width
- Both vertical and horizontal operation



S401628BB

SKU NUMBER	DESCRIPTION	WEIGHT (lbs.)
S401628BB	28 Ton Log Splitter 305cc Briggs and Stratton 1450 horizontal engine	540



Quickly converts to vertical operating position for heavy logs

## 35 Ton Log Splitters

### Standard on all 35 ton log splitters:

- 5" x 24" cylinder
- Auto-return valve
- Replaceable filter
- 4.8" x 8" wheels
- Trailer jack ground stand
- 7" high wedge
- 14 second cycle time\*
- 25.5" log length
- 6.5 gallon hydraulic capacity
- 45" log splitter height
- 87" log splitter length
- 51" log splitter width
- Both vertical and horizontal operation

Additional model-specific features included in product descriptions below.



S401635BB

SKU NUMBER	DESCRIPTION	WEIGHT (lbs.)
S401635BB	35 Ton Log Splitter 305cc Briggs and Stratton 1450 horizontal engine	552



S401635PH

SKU NUMBER	DESCRIPTION	WEIGHT (lbs.)
S401635PH	35 Ton Log Splitter 240cc Honda commercial horizontal engine	552

\* Tonnage and cycle times may vary depending upon mechanical and environmental conditions.

# LOG SPLITTERS



## 3-Point Log Splitter



S400197N0

Quickly converts to vertical operating position for heavy logs

SKU NUMBER	DESCRIPTION	WEIGHT (lbs.)
S400197N0	3-Point Log Splitter	380

- Uses tractor 3-point hitch and hydraulic system
- 4" x 24" cylinder
- Auto-return valve
- 7" high wedge
- Cycle time depends on tractor\*
- 25.5" log length
- 42" horizontal log splitter height
- 72" vertical log splitter height
- 72" log splitter length
- 22" log splitter width
- Both vertical and horizontal operation

Splitting force is determined by cylinder size and tractor PSI. Cycle time depends on cylinder size and GPM's that the tractor produces. Tractor should ideally produce 8-15 GPM at 1500 to 2500 PSI. Do not exceed 3500 PSI.

\* Tonnage and cycle times may vary depending upon mechanical and environmental conditions.





# LOG SPLITTERS

## Log Splitting Accesories



### Bolt-on 4-Way Wedge System

Allows operator to switch between 2-way and 4-way wedges in seconds. Operator may also choose between two wedge operating heights for larger "rounds"

SKU NUMBER	DESCRIPTION
S40146000	Bolt-on 4-Way Wedge System (Small) Fits Splitmaster 22-25 ton log splitters & Huskee 22-28 ton log splitter beams with rounded edges only
S40145900	Bolt-on 4-Way Wedge System (Large) Fits Splitmaster 28 & 35 ton log splitters & Huskee 35 ton log splitter beams with rounded edges only



### Slip-on 4-Way Wedge

Simply slip the 4-way wedge over standard wedge, then loop cable around cylinder and secure with lynch pin

SKU NUMBER	DESCRIPTION
S40144200	Slip-on 4-Way Wedge Fits Splitmaster 22-25 ton & Huskee 22-28 ton log splitters
S40144300	Slip-on 4-Way Wedge Fits Splitmaster 28-35 ton & Huskee 35 ton log splitters



### Log Catchers

Save time and reduce back strain when splitting wood; increases splitting efficiency by reducing bending time to pick up split logs; holds the split log until you're ready to quarter it; attaches to log splitter beam in minutes

SKU NUMBER	DESCRIPTION
S40141600	Log Catcher Fits all SpeeCo manufactured log splitters featuring a round beam. Will not fit units with a square beam



SKU NUMBER	DESCRIPTION
S40142900	Log Catcher Fits SpeeCo Splitmaster 15 ton log splitters (S401615BL & S401615UH)

### Log Splitter Stand

SKU NUMBER	DESCRIPTION
S40101100	Electric Log Splitter Stand for 5 Ton Log Splitter Designed to keep log splitter secure at a comfortable working height; assembles in minutes



### Log Splitter Covers

Protects from water, UV and mildew; manufactured with PVC coated polyester; snaps to keep cover secure; protects against cold temperature

SKU NUMBER	DESCRIPTION
S47021300	Log Splitter Cover Fits Splitmaster 22-35 ton log splitters
S47021700	Log Splitter Cover Fits Splitmaster 15 ton log splitters



### Log Jack

Takes the effort out of lifting logs; holds logs up to 8" off the ground for clean and safe cutting; handles logs from 3" to 15" in diameter

SKU NUMBER	DESCRIPTION
S47011000	Log jack



### Splitting Maul

Carbon steel head is rounded on one end, in an octagonal shape, and on the opposite end, flattened to form a tapered curve and sharpened a bit; handles are steel; axe head is intended specifically for splitting logs and the striking face is for driving log splitting wedges.

SKU NUMBER	DESCRIPTION
S47020100	Splitting Maul



### Sledge Hammer

Carbon steel head has identical, octagonal shape on both sides; double faced - both faces are hardened; handles are steel for striking wood and log splitting wedges

SKU NUMBER	DESCRIPTION
S47020200	Sledge Hammer



# DIGGERS

## Handheld Post Hole Diggers

SpeeCo also offers one and two man hand held diggers with a complete line of augers.

- For farm, ranch and light construction projects
- One and two man models
- Engines - 2 h.p. and 5.5 h.p.
- Heat treated alloy gears
- Heavy duty centrifugal clutch
- Easy grip handles
- 4", 6", 8" and 10" augers available (sold separately)
- Designed for performance and durability

\* Auger sold separately



SKU NUMBER	UPC ITEM NO. 0-87196-	DESCRIPTION	WEIGHT (lbs.)
S241001D0	24195 0	One Man Digger Simple one man operation; 2 h.p. 2 cycle engine; auger sold separately	20
S241003C0	24191 2	Two Man Digger High output model for demanding jobs; easy and efficient two man operation; 5.5 h.p. 4 cycle engine; auger sold separately	54

## Augers & Accessories

Augers and accessories for handheld post hole diggers.

### Handheld Post Hole Digger Augers & Accessories

SKU NUMBER	UPC ITEM NO. 0-87196-	DESCRIPTION	WEIGHT (lbs.)
S24105000	24150 9	Auger, hand held screwpoint	1.92
S24105100	24151 6	4" diameter auger	10
S241052ZBU	24162 2	4" cutting edges (bag of 2)	0.1
S24105300	24153 0	6" diameter auger	11
S241054ZBU	24164 6	6" cutting edges (bag of 2)	0.6
S24105500	24155 4	8" diameter auger	13
S241056ZBU	24166 0	8" cutting edges (bag of 2)	0.7
S241058ZBU	24168 4	10" cutting edges (bag of 2)	1
S24105900	24159 2	Fish tail point for augers	2



**S24105900**  
Fish Tail Point Comes Standard With Augers





# DIGGERS

## Tractor Mounted Post Hole Diggers

SpeeCo is a leading manufacturer of tractor-mounted, PTO driven post hole diggers. We have provided this farm and ranch implement to customers around the globe for over forty years. We have a full line of diggers, augers, and accessories to choose from.

### Standard on all diggers:

- Safety shields on input and output shafts
- Heavy duty gear box
- Replaceable cutting edges
- Manual canister

Additional model-specific features included in product descriptions below.

SKU NUMBER	UPC ITEM NO. 0-87196-	DESCRIPTION	WEIGHT (lbs.)
S24044000	24440 1	Model 65 Post Hole Digger, Category 1 & 2	140

- High strength 2-7/8 in. O.D. tubing
- PTO driveline with plastic safety shield
- Category 1 or 2 tractor hookup
- Replaceable screw point
- 6", 9" or 12" diameter augers available (sold separately)



SKU NUMBER	UPC ITEM NO. 0-87196-	DESCRIPTION	WEIGHT (lbs.)
S24041700	24417 3	Model 70 Post Hole Digger, Category 1 & 2	179

- High strength 2-7/8 in. O.D. tubing
- PTO driveline with plastic safety shield
- Category 1 or 2 tractor hookup
- Replaceable screw point
- 6", 9" or 12" diameter augers available (sold separately)



SKU NUMBER	UPC ITEM NO. 0-87196-	DESCRIPTION	WEIGHT (lbs.)
S24046000	24460 9	Heavy Duty Post Hole Digger, Category 1 & 2	235

- High strength 3-1/4 in. O.D. tubing
- Heavy duty driveline with plastic safety shield
- Category 1 and 2 compatible
- Replaceable bolt-on spiral point
- 6", 9", 12", 18" or 24" diameter augers available (sold separately)
- Category 1 & 2 speedball
- Cast steel ears
- Tapered rib with multiple holes for extra strength & adjustability



SKU NUMBER	UPC ITEM NO. 0-87196-	DESCRIPTION	WEIGHT (lbs.)
S24045000	24450 0	Compact Post Hole Digger, Category 0 & 1	80

- High strength 2-7/8 in. O.D. tubing
- Driveline with plastic safety shield
- Subcompact Category 0 and 1 compatible
- Replaceable spiral point
- 6", 9" or 12" diameter augers available (sold separately)
- Boom with multiple holes for adjustability



# DIGGERS



## Augers & Accessories

Augers and accessories for tractor mounted post hole diggers.



### Tractor Mounted Post Hole Digger Augers & Accessories

SKU NUMBER	UPC ITEM NO. 0-87196-	DESCRIPTION	COMPATIBLE WITH				WEIGHT (lbs.)
			Compact	Model 65	Model 70	Heavy Duty	
S24054600	24546 0	6" auger with screw point & replaceable cutting edges	x				21
S240515A0	24516 3	6" auger with screw point & replaceable cutting edges		x	x		23
S24121100	24271 1	6" auger with spiral point & replaceable carbide cutting edges				x	21
S24056700	24567 5	6" cutting edge	x	x	x		0.6
S240567ZBU	24569 9	6" cutting edge set	x	x	x		1.2
S24054700	24546 0	9" auger with screw point & replaceable cutting edges	x				32
S240525A0	24526 2	9" auger with screw point & replaceable cutting edges		x	x		34
S24121400	24274 2	9" auger with spiral point & replaceable carbide cutting edges				x	42
S24057700	24577 4	9" outer cutting edge	x	x	x		0.5
S24057800	24578 1	9" inner cutting edge	x	x	x		0.5
S240579ZBU	24579 8	9" cutting edge set (bag of 2)	x	x	x		2
S24054400	24547 7	12" auger with screw point & replaceable cutting edges	x				43
S240535A0	24536 1	12" auger with screw point & replaceable cutting edges		x	x		49
S24121700	24277 3	12" auger with spiral point & replaceable carbide cutting edges				x	60
S24058700	24587 3	12" outer cutting edge	x	x	x		0.7
S24058800	24588 0	12" inner cutting edge	x	x	x		0.7
S240589ZBU	24589 7	12" cutting edge set (bag of 2)	x	x	x		3.2
S24054800	24548 4	18" auger with screw point & replaceable cutting edges				x	99
S24054900	24549 1	24" auger with screw point & replaceable cutting edges				x	125
S24059200	24592 7	Screw point	x	x	x		2.8
S24121900	24283 4	Spiral point for 6", 9", 12", 18" & 24" augers				x	1.4
S24122200	24122 6	2" carbide cutting edges for 6", 9", 12", 18" & 24" augers (bulk)				x	0.7



# TRASH PUMP & ENGINE

## Trash Pump

SKU NUMBER	DESCRIPTION
S44010100	2" Semi-Trash Pump

- Powerful proven 6.5 H.P. Kohler engine
- Durable ductile iron impeller and diffuser
- 2" NPT inlet and outlet connections
- Handles up to 1/2" solids
- 2 year warranty

Packaged in 4 color box



S44010100

## Engine

SKU NUMBER	DESCRIPTION
S39055400	212cc Horizontal Shaft Engine

- Low oil shut off
- Full choke for cold weather starting
- Fuel shut off for towing
- 3/4" keyed output shaft
- 3.0 L fuel tank
- OHV design
- EPA approved

Packaged in 4 color box



S39055400

# MERCHANDISING



## Plan-O-Grams

We can assist in the design of custom plan-o-grams or other retail displays. We will recommend specific products that have proven to be fast-moving. In recent years we have developed plan-o-grams for single farm stores and national farm retail chains. We recognize that each customer has different needs and limitations and will tailor our recommendations based on these factors. Please feel free to contact our marketing department for suggestions and for samples of plan-o-grams that we have designed for other customers.



## Other Methods

### POLY BAGS AND CLAMSHELL PACKAGING

Many of our best-selling parts are available packaged in colorful poly bags or plastic clamshells. This simplifies retail display and inventory and promotes impulse sales. Both have UPC bar code labels and descriptive information. You can find the products available under the columns in the catalog marked "**BAG NO.**" and "**CLAM. NO.**".



### UPC LABELED PARTS

Our retail customers receive UPC bar code labels on all of our three-point linkage parts. The label includes part number, description and bar code.







## Custom Manufacturing

With over fifty years of manufacturing and design experience, supported by engineering and quality control staff, SpeeCo is in the unique position to offer custom manufacturing services.

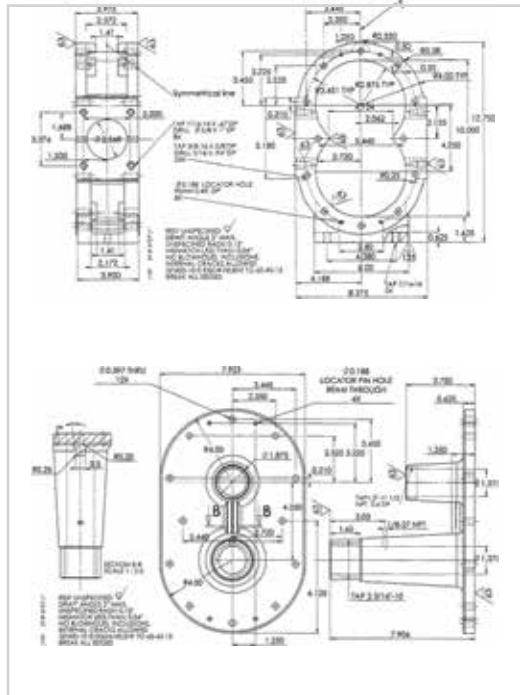
We have the capability to produce variations of our standard linkage parts or items of your own design.

SpeeCo has partnered with most leading tractor and implement manufacturers to produce quality products to their specifications. Our capabilities have expanded beyond the agricultural sector to include industrial, mining and construction equipment.

Typical custom services include the production of forgings, castings, weldments, and high tolerance machining along with heat treating and custom finishes. We welcome the opportunity to take on the most challenging design projects.

We invite you to submit drawings and specifications of your components for quotation.

For more information, please contact our OE sales department at [oesupport@speeco.com](mailto:oesupport@speeco.com).



Blueprints



CAD/CAM Software Drawing



Actual Part



SpeeCo carries custom made pins in numerous diameters and lengths for all types of equipment. Pins made from various steels and alloys that can be hardened and heat treated to provide multiple strengths for your specific requirements.



We have robotic, MIG and fusion welding capabilities that allow us to produce a broad range of custom measurements.



Equipment includes multiple three ton drop hammers and 1600 ton screw presses to supply you near-net-shape forgings. After forging, products can be machined to size and can be heat treated in a numerically controlled atmosphere to provide concise measurements and the utmost strength desired.



We manufacturer a wide range of custom bushings and bosses up to 10" in diameter for all types of agricultural and industrial equipment manufacturers.



SKU NO.	PAGE NO.	SKU NO.	PAGE NO.	SKU NO.	PAGE NO.	SKU NO.	PAGE NO.
S00108	31	S01706	18	S03033000	8, 12	S06255	64
S01050200	12	S01708	18	S03052	70	S06261	64
S01050300	69	S01710	18	S03059	70	S06351	64
S01054100	69	S01712	18	S04000	49	S06352	64
S010541GT	69	S01714	18	S04001	49	S06355	64
S01054800	69	S02010100	6	S04002	49	S06401	64
S01060500	4	S02010200	6	S04003	49	S06405	64
S01060600	4	S02010300	6	S04004	49	S06411	64
S01060700	4	S02010400	6	S04005	49	S06415	64
S01061900	5	S020104ZAU	6	S04006	49	S06501	64
S01062000	5	S02010500	6	S04007	49	S06502	64
S01063000	4	S02010600	6	S04010100	11	S06503	64
S01064000	5	S020106ZAU	6	S04010800	11	S06505	64
S01064100	5	S02020100	7	S04010900	11	S06601	64
S01064200	8	S02020200	7	S04011500	11	S06602	64
S010642A0	8	S02020300	7	S04013000	11	S06603	64
S010642YAU	8	S020203ZAU	7	S04020100	11	S06605	64
S01064300	8	S02020400	7	S04021200	11	S06801	64
S010643YAU	8	S020204ZAU	7	S04030100	11	S06802	64
S01065500	4	S02020700	6	S04100	49	S06803	64
S01067000	4	S02020800	6	S04101	49	S06805	64
S01067200	4	S02021500	7	S04102	49	S07010100	12
S01070300	4	S02021600	7	S04103	49	S07020100	14
S01070400	4	S02021900	6	S04104	49	S07020200	14
S01070500	4	S02022500	6,7	S04105	49	S07020600	14
S01070600	4	S02022900	6	S04106	49	S07020800	14
S01071700	5	S02023100	7	S04107	49	S070208A0	14
S01071800	5	S02030100	7	S04108	49	S07021100	14
S01073000	4	S02030300	7	S04109	49	S07021200	14
S01073500	4	S02030500	6	S05010100	13	S07021900	14
S01080700	4	S02040100	9	S05010200	13	S07022000	14
S01082600	5	S020401YAU	9	S05020100	13	S07022100	14
S01082700	5	S020401ZAU	9	S05050	64	S07022400	14
S01090700	4	S02040200	9	S05051	64	S07022600	15
S01090900	4	S020402YAU	9	S05053	64	S07022800	14
S01093300	5	S020402ZAU	9	S05054	64	S07022900	14
S01093400	5	S02040300	9	S05076	48	S07023000	15
S01600	21	S020403YAU	9	S05500	48	S07023100	15
S01601	21	S02040400	9	S06020100	13	S07023400	15
S01602	21	S020404YAU	9	S06020200	13	S07023500	15
S01603	21	S02040500	9	S06025100	13	S07023600	15
S01604	21	S02040600	9	S06025200	13	S07023700	15
S01605	21	S020406YAU	9	S06025600	13	S07023800	15
S01606	21	S02040700	9	S06026000	13	S07023900	15
S01607	21	S020407YAU	9	S06030100	13	S07024000	14
S01608	21	S03030500	12	S060301C0	13	S07024300	14
S01609	21	S03032200	8, 12	S06040300	13	S07024500	14
S01700	18	S030322YAU	8	S06100	64	S07024600	14
S01701	18	S03032300	8, 12	S06120	64	S07024700	14
S01702	18	S03032400	8, 12	S06241	64	S07024800	14
S01703	18	S03032500	8, 12	S06245	64	S07024900	14
S01704	18	S030325YAU	8	S06251	64	S07025000	15





# SKU INDEX

SKU NO.	PAGE NO.	SKU NO.	PAGE NO.	SKU NO.	PAGE NO.	SKU NO.	PAGE NO.
S07025600	15	S07080500	12	S070927ZCU	24	S07096600	44
S07025700	15	S070805A0	12	S070927ZEU	24	S070966YAU	44
S07041100	23	S070805YBU	12	S07092800	24	S07096700	44
S070411YDU	23	S07080700	12	S070928YBU	24	S070967ZBU	44
S070411ZDU	23	S070807A0	12	S07092900	24	S07097900	30
S07041200	23	S07080800	12	S070929S0	24	S070980YNU	72
S070412YCU	23	S07090100	26	S070929YAU	24	S070980ZNU	72
S070412ZDU	23	S070901YDU	26	S070929ZBU	24	S07098100	72
S07041300	23	S070901ZBU	26	S07093800	44	S07098400	26
S070413YBU	23	S070901ZJU	26	S070938YBU	44	S07098500	26
S070413ZBU	23	S07090200	26	S070938ZBU	44	S07099100	22
S07041400	23	S070902YBU	26	S07093900	44	S070991ZBU	22
S070414YBU	23	S07090300	22	S070939YBU	44	S07099500	24
S070414ZBU	23	S070903ZBU	22	S070939ZBU	44	S070995YFU	24
S07041500	23	S07090400	26	S07094000	44	S07099600	24
S070415YCU	23	S070904YDU	26	S070940YBU	44	S070996YEU	24
S070415ZBU	23	S070904ZBU	26	S070940ZBU	44	S07099700	24
S07041600	23	S07090500	26	S07094100	44	S070997YBU	24
S070416YBU	23	S070905ZBU	26	S070941YBU	44	S07100000	16
S070416ZBU	23	S07090800	26	S070941ZBU	44	S07100100	16
S07041700	23	S070908E0	26	S07095000	44	S07100200	16
S070417YCU	23	S070908ZBU	26	S070950ZBU	44	S07100300	16
S07041800	23	S07091000	69	S07095100	44	S07100400	16
S070418YBU	23	S07091300	26	S070951YBU	44	S07100500	16
S07041900	23	S070913YBU	26	S070951YDU	44	S071010C0	17
S070419YBU	23	S070913ZBU	26	S070951ZBU	44	S071011C0	17
S07042000	23	S07091400	26	S07095200	44	S071011CL	17
S070420YBU	23	S070914YBU	26	S070952ZBU	44	S071011SP	19
S07042100	23	S07091500	26	S07095300	44	S071011WC	16
S07070100	15	S070915YDU	26	S070953ZBU	44	S071012C0	17
S07070200	15	S070915ZBU	26	S07095400	44	S071012CL	17
S07070400	15	S07091600	26	S070954ZBU	44	S071013ZBU	20
S07070600	15	S070916ZBU	26	S07095500	44	S071014ZBU	20
S07071100	15	S07091900	26	S070955ZBU	44	S071015ZBU	20
S07071200	34	S070919YDU	26	S07095600	44	S071016ZBU	20
S07071300	34	S070919ZBU	26	S070956ZBU	44	S071017ZBU	20
S07071500	15	S07092000	26	S07095700	44	S071018ZBU	20
S07071600	15	S070920ZBU	26	S070957ZBU	44	S071021C0	17
S07071900	15	S07092200	24	S07095800	44	S071021CL	17
S07072000	15	S070922YIU	24	S070958ZBU	44	S071021SP	19
S07072900	34	S070922ZJU	24	S07095900	44	S071021WC	16
S070729YBU	34	S07092300	24	S070959YAU	44	S071022C0	17
S07073100	34	S070923YIU	24	S070959ZBU	44	S071022CL	17
S07073600	34	S070923ZLU	24	S07096000	44	S071022WC	16
S07074300	34	S07092400	24	S07096100	44	S071031C0	17
S07074400	34	S070924YFU	24	S07096300	44	S071031CL	17
S07074600	34	S070924ZHU	24	S070963ZBU	44	S071031SP	19
S07075000	34	S07092500	24	S07096400	44	S071031WC	16
S07080100	12	S070925YEU	24	S070964YBU	44	S071032C0	17
S070801A0	12	S070925ZGU	24	S070964ZBU	44	S071032CL	17
S070801YBU	12	S07092700	24	S07096500	44	S071032SP	19
S070801ZBU	12	S070927YBU	24	S070965ZBU	44	S071032WC	16

# SKU INDEX



SKU NO.	PAGE NO.	SKU NO.	PAGE NO.	SKU NO.	PAGE NO.	SKU NO.	PAGE NO.
S071041C0	17	S07125300	25	S10015000	66	S14113900	74
S071041WC	16	S07125700	25	S10015100	67	S14114200	10
S071042C0	17	S07126500	25	S100201N0	67	S14114400	10, 74
S071042CL	17	S07126900	25	S100202N0	67	S14114500	74
S071042SP	19	S07128000	25	S100203N0	67	S14115700	74
S071042WC	16	S07128100	25	S100204N0	67	S14116000	74
S071051C0	17	S07128200	25	S10022500	67	S16040100	11
S071052C0	17	S07128300	25	S10022600	67	S160401ZBU	11
S071052CL	17	S07128400	25	S10030100	66	S16040200	11
S071052SP	19	S07128600	25	S10030200	66	S160402YBU	11
S071052WC	16	S07130100	24	S10030300	66	S160426YAU	34
S071062C0	17	S07130200	24	S10030400	66	S16060000	42
S071062CL	17	S071302ZHU	24	S10040100	66	S16060200	42
S071062WC	16	S08020100	10	S10040200	66	S16060300	42
S071072C0	17	S080201YBU	10	S10041500	66	S16060400	42
S071072CL	17	S080201ZBU	10	S10050400	39	S16060500	42
S07111100	22	S08020800	10	S10060400	39	S16060600	42
S07111200	22	S080208YBU	10	S10060800	39	S16060700	42
S07111300	22	S080208ZBU	10	S10070300	39	S16060800	42
S07111800	22	S08020900	10	S10080500	38	S16061000	42
S07112000	22	S080209YBU	10	S10090100	38	S16061100	42
S07112200	22	S080209ZAU	10	S100901YAU	38	S16061200	42
S07112300	22	S08022000	10	S10110100	68	S16061300	42
S07112600	22	S080220ZAU	10	S10110200	68	S16061500	42
S07112700	22	S08022100	10	S10110300	68	S16061700	42
S07112900	22	S080221ZBU	10	S10110400	68	S16061800	42
S07113000	22	S08030100	10	S10110500	68	S16061900	43
S07114000	20	S080301YBU	10	S10110600	68	S160619YAU	43
S07114100	20	S080301ZAU	10	S10110700	68	S16062600	43
S07114200	20	S08030200	10	S10110800	68	S16063000	42
S07114300	20	S080320YAU	10	S10110900	68	S16063100	42
S07114400	20	S080302YBU	10	S10111000	68	S16064600	42
S07114500	17	S080302ZBU	10	S10111100	68	S16066000	42
S07114600	20	S08030300	10	S10111200	68	S16066100	42
S07114700	20	S080303YBU	10	S10111300	68	S16080100	39
S07114800	17	S080303ZAU	10	S10111400	68	S160801ZBU	39
S07120200	25	S08031200	10	S10111600	68	S16080200	39
S07120400	25	S080312YBU	10	S10111900	68	S16080300	39
S07120600	25	S080312ZBU	10	S10112000	68	S160803ZBU	39
S07121200	25	S08031900	10	S10112200	68	S16080400	39
S07121400	25	S080319ZBU	10	S14041600	74	S160804ZBU	39
S07121600	25	S08032000	10	S14041700	74	S16080500	39
S07121800	25	S080502ZCU	71	S14110100	74	S160805ZBU	39
S07122000	25	S08101000	63	S14110200	74	S16080700	39
S07122700	25	S08101100	63	S14110300	74	S160807ZBU	39
S07122900	25	S08101200	63	S14110600	74	S16080800	39
S07123100	25	S08101300	63	S14110700	74	S16080900	39
S07123300	25	S09020100	11	S14110800	74	S160809ZBU	39
S07123400	25	S100101N0	67	S14111600	74	S16081100	39
S07124800	25	S100102N0	67	S14112400	74	S160811ZBU	39
S07125000	25	S100103N0	67	S14112700	10	S16081200	39
S07125200	25	S100104N0	67	S14113000	10, 74	S160812ZBU	39



# SKU INDEX

SKU NO.	PAGE NO.	SKU NO.	PAGE NO.	SKU NO.	PAGE NO.	SKU NO.	PAGE NO.
S16081300	39	S16106200	50	S175024SP	30	S175181SP	28
S160813ZBU	39	S16106300	50	S175025SP	30	S175182SP	28
S16081500	39	S16106400	50	S175026SP	30	S175183SP	28
S160815ZAU	39	S16106500	50	S175040SP	32	S175184SP	28
S16081600	39	S16106600	50	S175041SP	32	S175185SP	28
S16081700	39	S16106700	50	S175042SP	32	S175186SP	28
S160817ZAU	39	S16106800	50	S175043SP	32	S175230SP	29
S16081900	39	S16106900	50	S175044SP	32	S175232SP	29
S160819ZAU	39	S16107000	50	S175046SP	32	S175233SP	29
S16082100	39	S16107100	50	S175047SP	32	S175234SP	29
S160821ZAU	39	S16107200	50	S175050SP	28	S175235SP	29
S16082300	39	S16107300	50	S175052SP	28	S175236SP	29
S16082400	39	S16107400	50	S175053SP	28	S175237SP	29
S16082600	39	S16107500	50	S175054SP	28	S175238SP	29
S16085100	34	S16107600	50	S175055SP	28	S21150	41
S160851YAU	34	S16107700	50	S175056SP	28	S21151	41
S16086100	34	S16107800	50	S175057SP	28	S21152	41
S160861YAU	34	S16107900	50	S175058SP	28	S21153	41
S16087000	34	S16110100	54	S175059SP	28	S21154	41
S160870YAU	34	S16110200	54	S175060SP	28	S21156	41
S16087100	34	S16110300	53	S175070SP	29	S21157	41
S160871YAU	34	S16110400	54	S175072SP	29	S21158	41
S16087200	34	S16110900	54	S175090SP	33	S21159	41
S160872YAU	34	S16111000	53	S175091SP	32	S21160	41
S16087300	34	S16111300	55	S175093SP	33	S21161	41
S160873YAU	34	S16111500	55	S175101SP	33	S21162	41
S16087400	34	S16111800	55	S175102SP	32	S21163	41
S160874YAU	34	S16112000	55	S175103SP	32	S21164	41
S16090300	35	S16112100	55	S175104SP	27	S21165	41
S16090400	35	S16112500	55	S175105SP	32	S24041700	82
S16090500	35	S16116000	54	S175106SP	29	S24044000	82
S16090600	35	S16117000	52	S175107SP	32	S24045000	82
S16090700	35	S16117200	54	S175108SP	33	S24046000	82
S16090800	35	S16117400	52	S175109SP	33	S240515A0	83
S16090900	35	S16132000	40	S175111SP	31	S240525A0	83
S16091000	35	S161320B0	40	S175112SP	30	S240535A0	83
S16091100	35	S161320G0	40	S175113SP	28	S24054400	83
S16091200	35	S16132500	40	S175114SP	23	S24054600	83
S16091300	35	S161325B0	40	S175115SP	31	S24054700	83
S16091400	35	S161325G0	40	S175116SP	31	S24054800	83
S16100100	51	S17132100	43	S175117SP	31	S24054900	83
S16100200	51	S171321YBU	43	S175118SP	31	S24056700	83
S16100300	51	S171321ZEU	43	S175119SP	31	S240567ZBU	83
S16100500	51	S175001SP	23	S175120SP	31	S24057700	83
S16100600	52	S175002SP	23	S175121SP	31	S24057800	83
S16100700	51	S175004SP	23	S175122SP	44	S240579ZBU	83
S16100800	52	S175010SP	27	S175128SP	44	S24058700	83
S16100900	52	S175017SP	27	S175173SP	28	S24058800	83
S16101800	53	S175020SP	30	S175174SP	28	S240589ZBU	83
S16101900	53	S175021SP	30	S175175SP	28	S24059200	83
S16106000	50	S175022SP	30	S175176SP	28	S241001D0	81
S16106100	50	S175023SP	30	S175180SP	28	S241003C0	81

# SKU INDEX



SKU NO.	PAGE NO.	SKU NO.	PAGE NO.	SKU NO.	PAGE NO.	SKU NO.	PAGE NO.
S24105000	81	S39102000	35	S49030400	46	S62060	65
S24105100	81	S39103000	35	S49030500	46	S66100	65
S241052ZBU	81	S39104000	35	S490305YAU	46	S66120	65
S24105300	81	S39105000	35	S49030600	46	S66351	65
S241054ZBU	81	S39106000	35	S490306YAU	46	S66352	65
S24105500	81	S400197N0	79	S49031200	45	S66401	65
S241056ZBU	81	S40100500	76	S49040100	46	S66411	65
S241058ZBU	81	S40101100	80	S49040200	46	S66501	65
S24105900	81	S40123300	77	S490402YBU	46	S66502	65
S24121100	83	S40141600	80	S49040300	46	S66503	65
S24121400	83	S40142900	80	S490403YAU	46	S66601	65
S24121700	83	S40144200	80	S49040400	46	S66602	65
S24121900	83	S40144300	80	S490404YAU	46	S66603	65
S24122200	83	S40145900	80	S49040500	46	S66801	65
S25080200	38	S40146000	80	S490405YAU	46	S66802	65
S28029700	71	S401615BL	76	S49040600	46	S66803	65
S28030100	71	S401615UH	76	S490406YAU	46	S70020400	21
S28030300	71	S401622BL	77	S49040700	46	S70021100	21
S28030400	71	S401622PH	77	S490407YAU	46	S70032100	21
S28031000	72	S401625PH	77	S49040800	46	S70032200	21
S28031100	71	S401625PHLC	77	S49040900	46	S70033100	21
S28031300	72	S401625UB	77	S49041000	46	S70033200	21
S28031400	70	S401628BB	78	S49041100	46	S70034100	21
S28031500	70	S401635BB	78	S49050100	47	S70034200	21
S28032200	70	S401635PH	78	S49050200	47	S70035100	21
S28032400	73	S44010100	84	S49050300	47	S70035200	21
S28032700	73	S47010500	40	S49050400	47	S70036200	21
S28032900	73	S47010600	40	S49051600	47	S70037200	21
S28033000	73	S47010700	40	S49051700	47	S70038200	21
S28033200	73	S47010800	40	S49061100	47	S70039200	21
S28034900	70	S47011000	80	S49062100	47	S70041500	73
S28039600	73	S47020100	80	S49063100	47	S70042100	20
S33030300	75	S47020200	80	S49064100	47	S70043100	20
S33030500	75	S47021300	80	S49065100	47	S70043200	20
S33031000	75	S47021700	80	S56021600	41	S70044100	20
S34000	49	S49010300	45	S56021700	41	S70044200	20
S34001	49	S49010400	45	S56021800	41	S70045200	20
S34002	49	S49010500	45	S56021900	41	S70046200	20
S34003	49	S49010600	45	S56022000	41	S70047200	20
S34004	49	S49010700	45	S56022100	41	S70049200	20
S34005	49	S49010800	45	S56023100	41	S70051100	19
S34006	49	S49020300	45	S56023200	41	S70052100	19
S34007	49	S49020400	45	S56023400	41	S70052200	19
S34100	49	S49020500	45	S56023600	41	S70053100	19
S34101	49	S49020600	45	S56024000	41	S70053200	19
S34102	49	S49020700	45	S56024200	41	S70054100	19
S34104	49	S49020800	45	S56024500	41	S70054200	19
S34105	49	S49030100	46	S56024700	41	S70055100	19
S34107	49	S49030200	46	S56024900	41	S70055200	19
S36020200	74	S490302YBU	46	S56025100	41	S70055300	19
S39055400	84	S49030300	46	S62040	65	S70056200	19
S39081100	38	S490303YAU	46	S62050	65	S70057200	19







UltraFork



Manure Spreader



Quick Hitches



Post Hole Diggers



Log Splitters

• Augers  
• Hay Hooks  
• Log Catchers  
• Hand Held Diggers  
• Log Jacks  
• Log Wedges  
• 4-Way Splitters  
• Hydraulic Log Splitters

2013



SpeeCo - A Blount International Company  
U.S. Toll Free 800-525-8322  
Email: customersupport@speeco.com  
Website: www.speeco.com

CA4-930-1112  
Rev 1

speeco.com